

# TRASH



Drink & soup boxes,  
snack bags



Loose plastic bags/wrap,  
disposable gloves



Broken glassware & ceramics,  
plastic straws & utensils  
(Reusable items should be donated)



Diapers & pet waste



Hoses & wires



Polystyrene foam



## Used Clothing

Donate used clothing to a second-hand store or donation box where they will be resold or processed back into fibers.



## DO NOT INCLUDE:



Recycling



Food



Hazardous waste  
(see Special Handling section)



Loose plastic  
bags



Utensils & straws



Hoses & wire



Food-soiled  
paper



Hazardous waste  
(see Special Handling section)



Pet waste



Treated wood



Recycling



Plastic bags

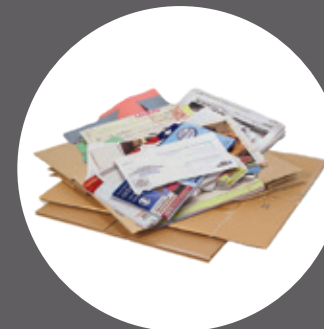


Hazardous waste  
(see Special Handling section)

510.613.8710

[www.albanyca.org/recycle](http://www.albanyca.org/recycle)

# RECYCLE



Clean paper & cardboard  
(please break down)



Paper cartons



Glass bottles & jars



Cans, foil, & scrap metal



Plastic bottles



Rigid plastic containers

## Additional Curbside Recycling Programs

Place dry-cell household batteries and cell phones in a sealed heavy duty plastic bag on top of your gray recycling cart. See Setout Instructions for information about recycling oil, filters, and CFLs curbside. Plastic bags and wrap can be bagged together in a plastic bag and placed in your recycling cart.



510.613.8710

[www.albanyca.org/recycle](http://www.albanyca.org/recycle)

# ORGANICS



All food waste,  
peels, pits, & cores



Bones & shells



Plant debris  
& clean wood



Coffee grounds  
& tea bags



Paper take-out &  
pizza boxes



All food-soiled paper

## Compost Food Soiled & Shredded Paper

In addition to food scraps, make sure to compost all food-soiled, stained, or wet paper. Paper towels, napkins, tissues, pizza boxes and shredded paper should always go in your green cart.

Tip: Compost shredded paper, confidential mail, and pizza boxes to absorb moisture in your green cart.



510.613.8710

[www.albanyca.org/recycle](http://www.albanyca.org/recycle)

# SPECIAL HANDLING



## HOUSEHOLD HAZARDOUS WASTE

Household hazardous waste (HHW) materials such as paints, pesticides, fertilizers, propane tanks, cleaners, sharps, and electronic wastes require careful disposal by a certified facility and are not allowed in your trash, recycling, or organics carts.

You may dispose of these items for free at an Alameda County Household Hazardous Waste Facility or at County-sponsored events throughout the year. For facility and event hours and locations, please visit [www.stopwaste.org/recycling/residents/household-hazardous-waste](http://www.stopwaste.org/recycling/residents/household-hazardous-waste) or call (800) 606-6606.

## Nearest Drop-Off Location:

2100 East 7th Street  
Oakland, CA 94606



## FREE ON-CALL BULKY ITEM PICKUP

You call, we haul! Call Waste Management at (510) 613-8710 to schedule an individual pickup for items too large for your trash cart once per year at your convenience. A second bulky pickup appointment is available for the first 300 requests per year. Bulky pickups are available every month except January.



## HOLIDAY TREE RECYCLING

Trees are collected curbside on your regular collection day during the month of January. Trees must be smaller than 6 feet and be free of flocking, ornaments, tinsel, nails, and stands.



Have a question about where you  
can recycle an item?

Check out [www.recyclewhere.org](http://www.recyclewhere.org).



# SETOUT & COLLECTION INFORMATION

## REGULAR COLLECTION INFORMATION

Trash is collected weekly in 10, 20, 32, 64 or 96 gallon wheeled burgundy carts. Customers can apply for a 10 gallon cart by calling Waste Management at (510) 613-8710.

The standard cart size for recycling (gray cart) and organics (green cart) is a 64 gallon cart. Residents may increase cart size up to a 96 gallon cart at no additional charge. Contact Waste Management at (510) 613-8710 to increase your recycling or organics cart size. A fee applies for additional organics carts.

## HOLIDAY COLLECTION

Holidays are Thanksgiving, Christmas and New Year's Day. When a holiday falls on a weekday, pickup will be one day later for the rest of that week.

## SETOUT INSTRUCTIONS

- Wheel carts to street curbside before 7:00 a.m. on your collection day. Residential collection will be provided Monday through Friday from 7:00 a.m. to 7:00 p.m.
- Do not overload carts; lids must close. Overage fees may apply to overflowing carts.
- Cardboard must fit loosely in your recycling cart.
- California prohibits the disposal of batteries, CFLs, and electronic waste in the trash.



# MORE SERVICES



## EXTRA SERVICE OPTIONS

For occasional extras, you may purchase 30 gallon paper bags for yard trimmings or trash service tags to fix to a 32 gallon trash bag. Bags and tags may be purchased by calling Waste Management at (510) 613-8710.

## SENIOR CITIZEN RATE

A 20% discount on the monthly trash rate is available for residential customers that are sixty-two (62) years or older. Contact Waste Management at (510) 613-8710 or visit the Albany Senior Center to obtain an application.. Proof of age is required.



## DISABLED SERVICES

Qualifying disabled individuals may apply for free backyard collection services so they do not need to bring carts to the street on collection day. Call (510) 613-8710 for details.

## BACKYARD COLLECTION

Carts can be collected from backyards for an additional fee, or no fee for qualifying disabled individuals. Call (510) 613-8710 for details.



## COMPOST GIVEAWAY

Bagged compost is available for distribution to residential customers annually. Giveaway details can be found at [www.albanyca.org/compostgiveaways](http://www.albanyca.org/compostgiveaways). Bag limits may apply. WM EarthCare™ Homegrown compost is made from Bay Area yard trimmings and residential food scraps and approved for organic farming. Learn more at [www.wmearthcare.com](http://www.wmearthcare.com).

## CONTACTS & IMPORTANT NUMBERS

Waste Management Customer Service **510 613 8710**

Alameda County Recycling Hotline **1 877 STOPWASTE (1 877 786 7927)**  
[www.StopWaste.Org](http://www.StopWaste.Org)

Household Hazardous Waste **1 800 606 6606**  
[www.household-hazwaste.org](http://www.household-hazwaste.org)

City of Albany Community Development Dept. **510 528 5760**  
[www.albanyca.org/recycle](http://www.albanyca.org/recycle)  
[com-dev@albanyca.org](mailto:com-dev@albanyca.org)

PRESORTED STD  
US POSTAGE PAID  
PERMIT #2798  
OAKLAND CA



Return Service Requested



Para obtener esta información en español, llame al (510) 613-8710.



# RESIDENTIAL DISPOSAL & RECYCLING SERVICES



Questions?  
[www.albanyca.org](http://www.albanyca.org)  
510.613.8710