



GREEN/FOOD WASTE SERVICE

Stockton residents can now recycle their yard and food waste in one cart. Please help divert compostable items from the landfill and place food scraps in your green/food waste cart (green lid). This cart can also be used to dispose of yard trimmings. Waste Management will service this cart every week.



FREE CURBSIDE CLEAN SWEEP (FEB - OCT)

Each customer account can receive one free curbside bulky pickup between February and October. Simply call 209-946-5711 two weeks in advance of your desired pickup day to schedule an appointment.

Items must be placed curbside the night before your pickup and cannot exceed 3 cubic yards. All items must be bagged or boxed, except large items such as couches, chairs and appliances.

Acceptable Items: furniture, mattresses, carpets, appliances, e-waste (computers and televisions), tires (up to five (5) without rims) and up to six (6) 30-gallon bags of trash or green waste.

Not Acceptable Items: construction debris (dirt, rock, concrete), household hazardous waste (HHW), liquids, loose items not bagged.



HOUSEHOLD HAZARDOUS WASTE (HHW)

Stockton residents can bring most household hazardous waste to the following location free of charge:

San Joaquin County Household Hazardous Waste Facility
7850 R.A. Bridgeford Street, Stockton, CA 95206
Hours: Thursday - Saturday | 9 a.m. to 3 p.m.
(209) 468-3066

The facility accepts up to 15 gallons of liquids or 125 lbs. of waste per trip. The facility also has a HHW Reuse area where residents can pickup paints and other reusable HHW products.



BACKYARD COLLECTION

Carts can be collected from backyards for an additional fee, or no fee for qualifying disabled individuals. Customers who qualify for this service must reapply each year. Call (209) 946-5711 for details.

SERVICE AND BILLING RELATED QUESTIONS

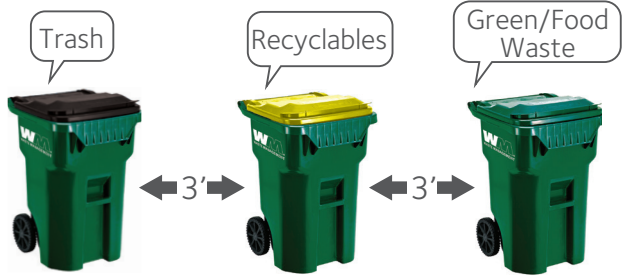
Waste Management Customer Service
cssacramento@wm.com

(209) 946-5711
stocktonrecycles.com



1240 Navy Drive
Stockton, CA 95206

Para obtener esta información en español, llame al (209) 946-5711



Cart Set Out and General Information

- Wheel carts to curb by 5 a.m. on your collection day. Carts should be placed side-by-side at least three (3) feet apart and three (3) feet away from objects such as parked cars, mailboxes and utility poles.
- Do not overload carts. Lids must close.
- Please sort materials properly (see inside for tips.) Placing the wrong item in the wrong cart is considered contamination and can result in an additional fee.
- Holiday Schedule: New Year's Day and Christmas Day. If one of these two holidays falls on a regular collection day, collection will be delayed one day for the rest of the week.



TRASH



Snack & Chip Bags, Candy Wrappers



Drink & Beverage Boxes / Pouches (Multi-material Packaging)



Plastic Wrap, Bags & Other Plastic Film



Broken Glass & Dishes (Please Wrap)



Diapers & Pet Waste



Food-Soiled Paper



Hoses, Cords & Wire



Polystyrene Foam & Packaging



Cup Lids, Plastic Utensils, Plastic Straws, Rigid Plastic Containers (Including items marked compostable)

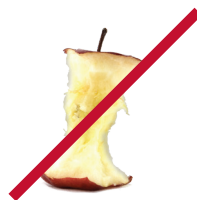
Please do not include the following in the trash cart:



Household Hazardous Waste



Batteries/CFLS/E-Waste



Food Waste



RECYCLE

Please empty all containers prior to recycling.



Clean Paper, Magazines, Newspaper, Cardboard, Junk Mail



Glass Bottles & Jars



Empty Plastic Bottles



All Metal Beverage & Food Cans, Aerosol Cans, Clean Aluminum Pans & Foil

For a more detailed list of acceptable items, please visit StocktonRecycles.com

Please do not include the following in the recycling cart:



Polystyrene, Plastic Bags



Diapers or Pet Waste



Food Waste



Food-soiled Paper



Broken Glass / Dishes



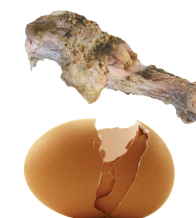
Batteries/CFLS/E-Waste



GREEN/FOOD WASTE



Grass, Weeds, Green plants, Tree limbs, Wood chips, Dead plants, Brush, Garden trimmings, Leaves
Christmas trees can be placed into green/food waste cart. Trees over 6 feet must be cut in half.



Food Scraps, Including Egg Shells, Meat & Bones



Sod



Palm Leaves



Dirt

No dirt, rock, sod, or palm leaves



Diapers or Pet Waste



Plastic Bags



Household Hazardous Waste