

# Wildlife Management Program 2012

**WM's commitment to Wildlife Habitat Preservation**





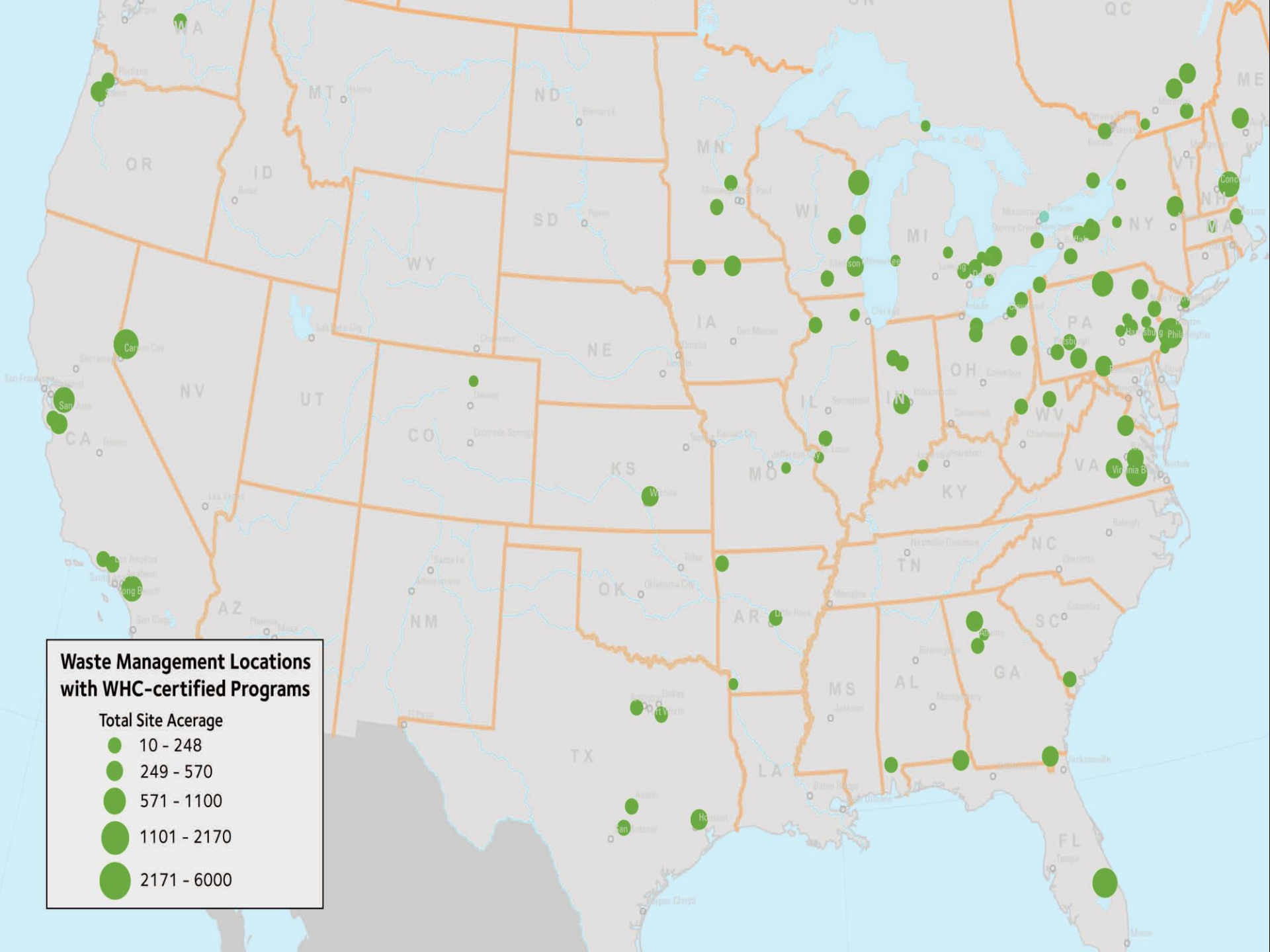
**WM provides 25,000 acres  
of wildlife habitat at over 100 sites  
throughout the USA.**



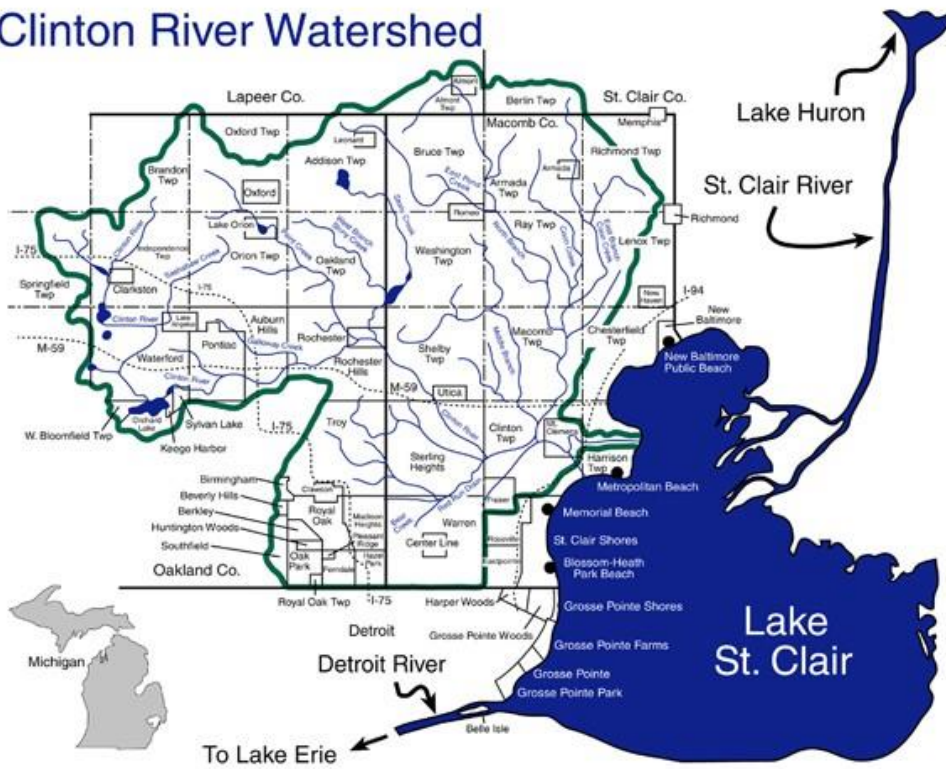
## Waste Management Locations with WHC-certified Programs

### Total Site Acreage

- 10 - 248
- 249 - 570
- 571 - 1100
- 1101 - 2170
- 2171 - 6000



# Clinton River Watershed

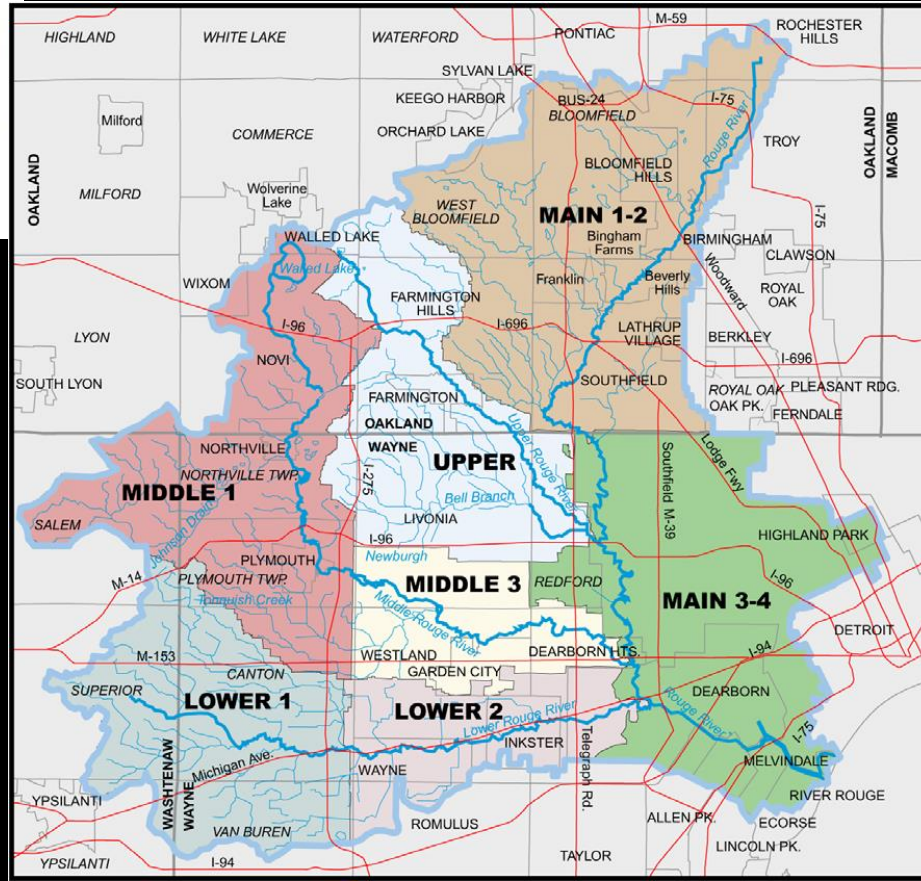


No matter where we live  
We all live in a watershed

Clinton River Watershed – above,  
Shiawassee to the NW, Huron to the SW

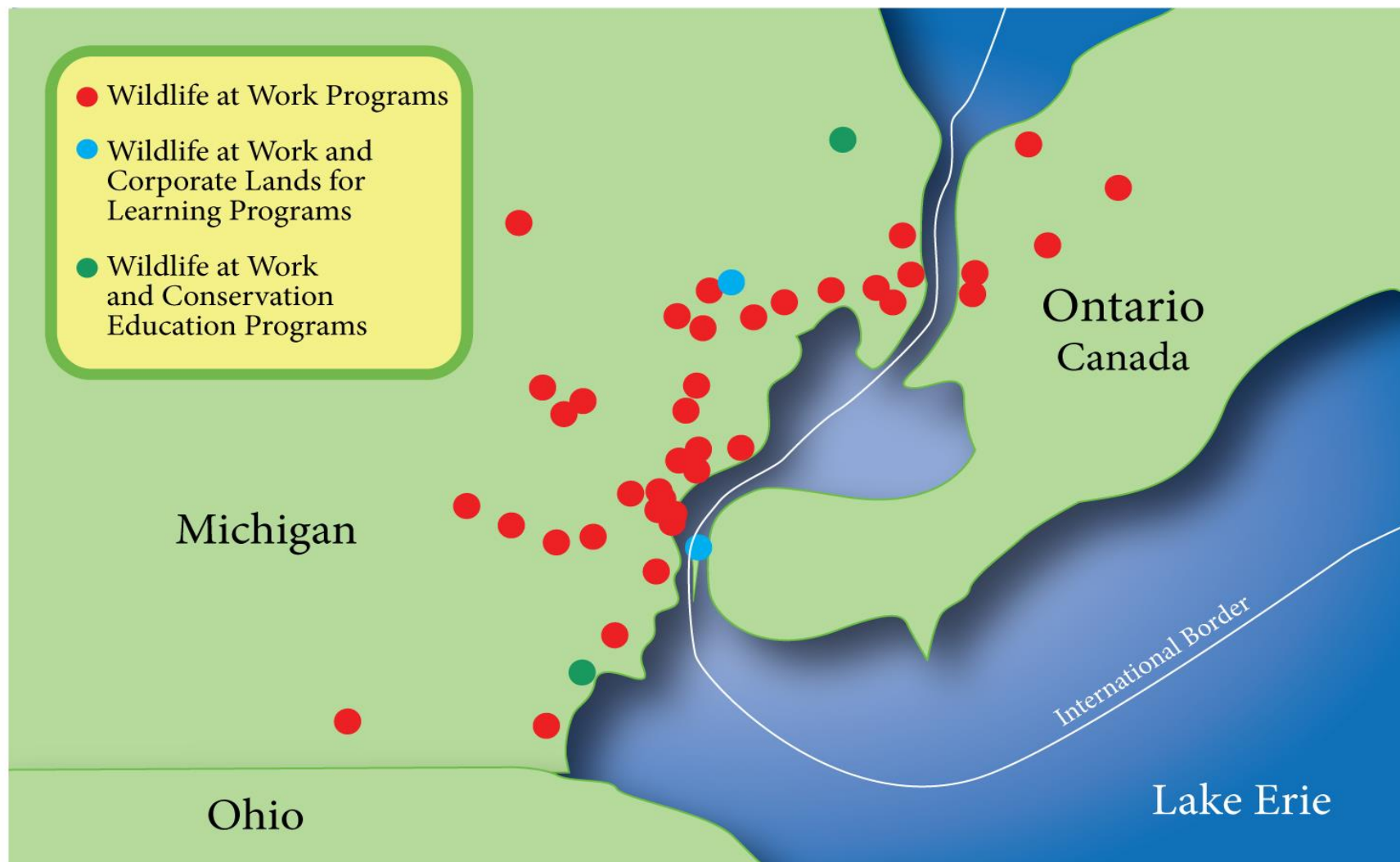
OAKLAND COUNTY

Rouge River Watershed - right

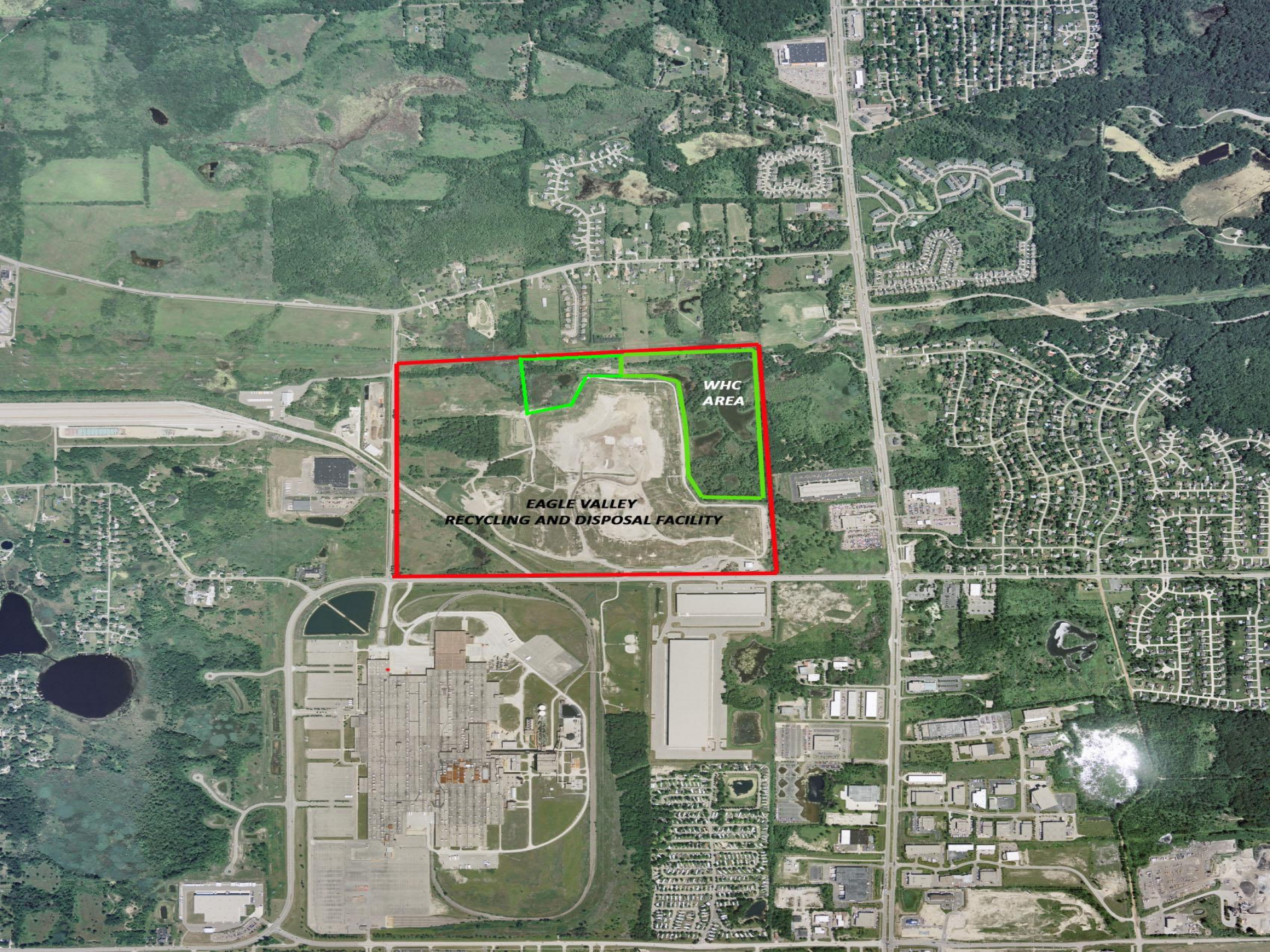




# WHC & businesses committed to habitat restoration







**EAGLE VALLEY  
RECYCLING AND DISPOSAL FACILITY**

**WHC  
AREA**



Sign cost is \$2,200 and is  
not owned by WM...  
if WM loses certification  
the sign is taken back by WHC.

**WM**  
EAGLE VALLEY



**EAGLE VALLEY**  
**RECYCLING & DISPOSAL FACILITY**  
**CERTIFIED WILDLIFE AT WORK**



**WILDLIFE HABITAT COUNCIL**





# Natural Areas at Eagle Valley



## MDNR Conservation Easements







Basin A - above



Basin C - above

Basin B - below



Basin D

Basin E









W<sup>N</sup>  
SE



W<sup>N</sup>  
SE



# Waldon Middle School



Building  
Wildlife  
Habitats









MONITORING HABITATS





Wood Duck House Basin B







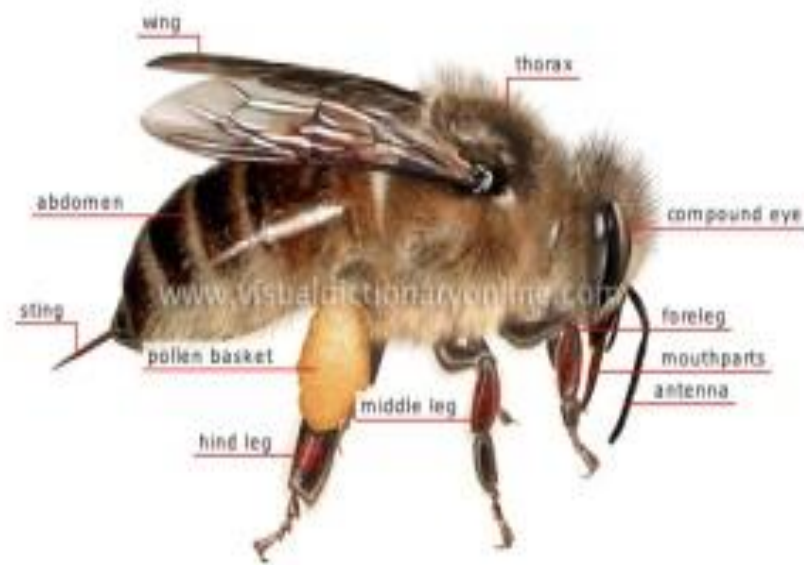
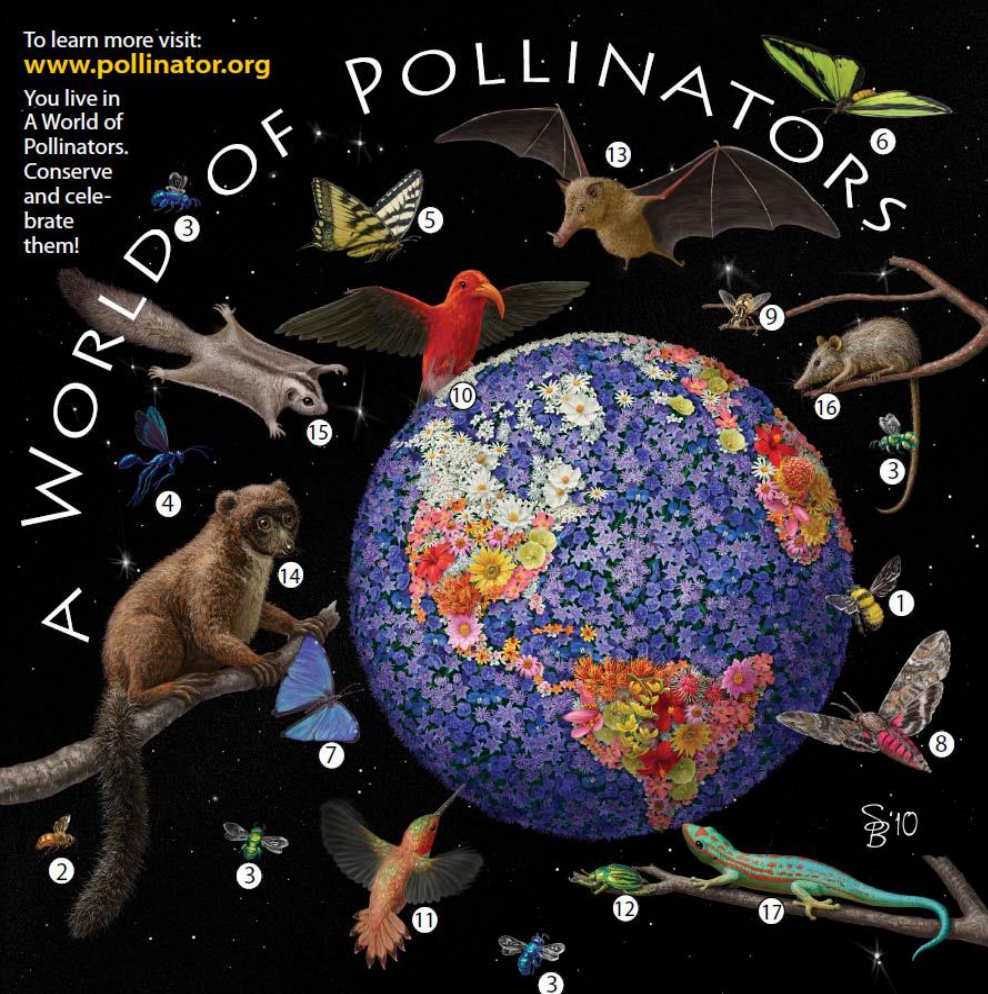


## Bat House Installation Basin B



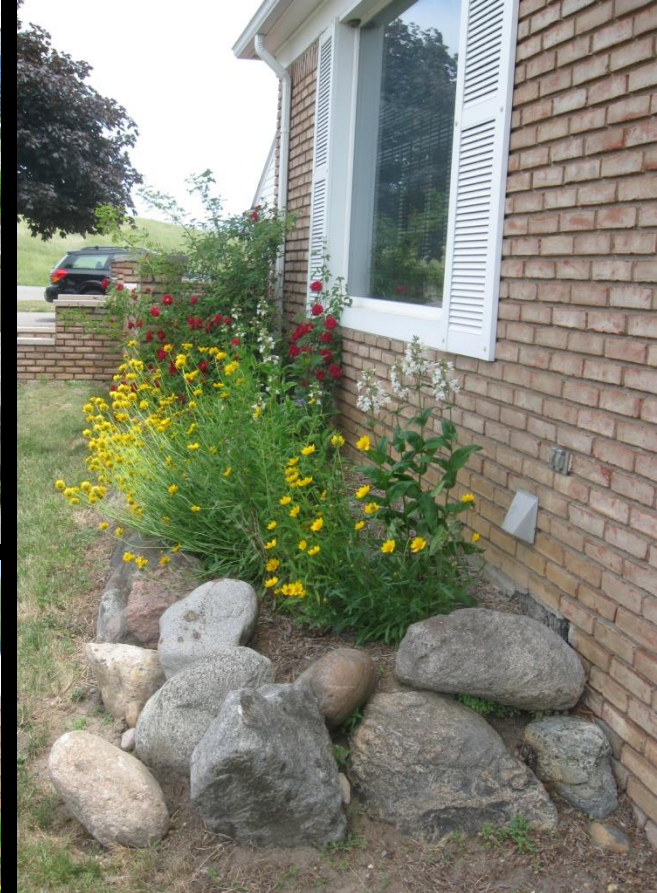
To learn more visit:  
[www.pollinator.org](http://www.pollinator.org)

You live in  
A World of  
Pollinators.  
Conserve  
and cele-  
brate  
them!



Education about the  
importance of Pollinators





Pollinator Gardens  
At Eagle Valley





# Blue Bird House Installations



Winter  
monitoring



# Owl House Installation



Waldon Middle  
School Students





# Scalehouse Project





Common  
Garden  
Spider

6" Big





# Species Inventory

Twice a year

You never  
know what  
you'll find...





# NATURE'S FOOTPRINT



# MAN'S FOOTPRINT





# Land Snail



**Female Widow Skimmer**

<http://www.willowbrookwildlife.com/Dragonflymain.asp>

**Deer Bone**





Monarch on  
New England Aster  
& Golden Rod



Yellow Swallowtail



Little Wood Satyr



Virginia Ctenucha





**May Apple**



**Old Growth Maple**



**Wild Iris**



Shag Bark Hickory



Tiny Fern





Blackberry



Juniper tree trying to get in



Bladder Campion

Multi-floral rose – invasive



Sensitive Fern



**SUMMER 2011  
Inventory**



**2011**

**SUMMER**

**Inventory  
cont.**



**Yellow Goats Beard**



**Dog Bane in flower**

**Butterfly Weed**



**Beach Pea**







## JIMSON WEED

All parts of the plant are toxic, so pleasant effects are limited -- Atropine and scopolamine block the neurotransmitter acetylcholine, causing dry mouth, dilated pupils, high temperature (but reduced sweating), and blurred vision. Psychological effects include confusion, euphoria, and delirium.

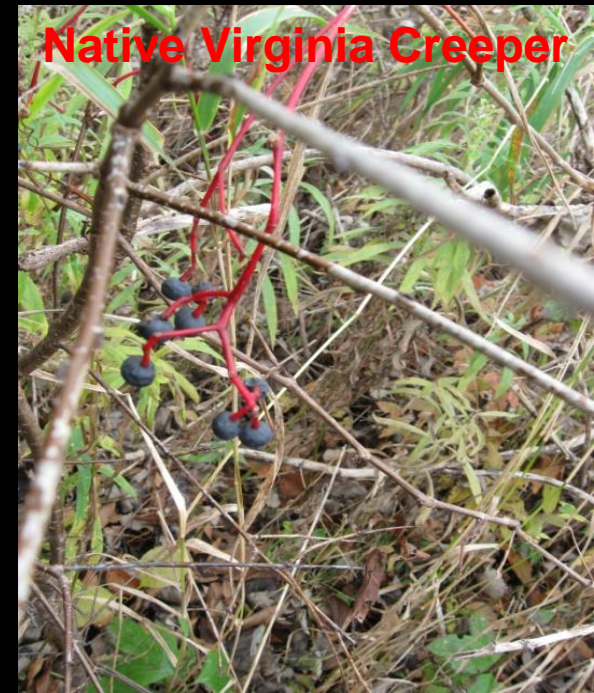
**Medical Uses:** Because of its anticholinergic properties and antispasmodic effects, Jimson weed was used in traditional medicine to treat a variety of illnesses. Today, extracts are still used in treating asthma, intestinal cramps, and both diarrhea and bed-wetting.







**Bittersweet**



**Native Virginia Creeper**

**OCTOBER 2011  
SPECIES INVENTORY with  
OAKLAND UNIVERSITY**





**BIRDS**

Other:  
Ruddy Duck  
Horned Larks  
Finches  
Warblers  
Blue bird  
Peregrine Falcon  
Chickadees  
Juncos  
Kingfisher  
Orioles



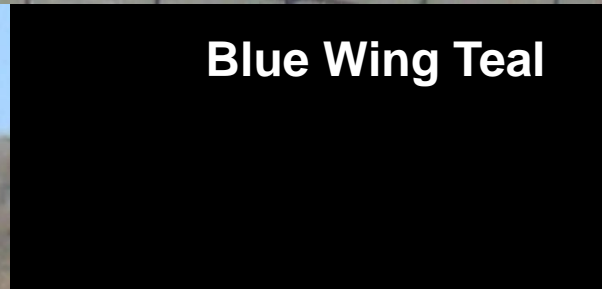
**ALLEY**



**Eastern Kingbird**



**American Kestrel**



**Blue Wing Teal**



**Egrets in Basin D**



**Golden or Juvenile Bald Eagle**





## Meet Eva Orion Rescued 2008

Currently residing at  
Braveheart Raptor Center  
Muskegon MI

Turkey Vultures are  
the Garbage Men  
of the Bird World

- Six Foot Wing Span
- Able to see up to 1 to 2 miles away
- Can smell as far as they can see







2011

Meet Steve

aka Petey Lenox

Rescued October  
2011

Now residing  
comfortably  
at the Howell  
Nature Center  
Being “adopted”  
by WM





ORION ART CENTER

RE-CREATE

ART CONTEST





This year's theme for  
Re-Create is:

“The Nature of Things”



Art inspired  
by Nature





# 2011 ORION, MI SCRIPPS MIDDLE SCHOOL STUDENTS



2010 KMB AWARD

"Eagle Valley taught me that the reason landfills are so big is because of the amount of garbage each person makes. To help the landfills and our planet, I plan to be more careful about what I throw away. I will make sure that if something can get recycled, it does, instead of going to a landfill."





Sustain-Ability – The ability to sustain the well being of the planet for this, as well as future generations.







# DRAGON BOAT RACING IN ORION





# DISCUSSION ABOUT BEES IN 2011





## Bee Hives at Pine Tree Acres Landfill

Signs of distress

The bees are sick





