

Eagle Valley Recycling and Disposal Facility

WM's Eagle Valley Recycling and Disposal Facility has been providing service for the disposal needs of residential, municipal and commercial customers in Oakland County and southeast Michigan since 1985.

The landfill is a Type II solid waste disposal facility and recycling drop-off center that also creates renewable energy. Eagle Valley is owned and operated by WM, the leading provider of comprehensive waste and recycling services in North America.

Containment Design

The entire site has been constructed with an engineered liner and leachate collection system. The double composite liner system at Eagle Valley is a liner and leachate collection system comprised of re-compacted clay liner or geo-synthetic liner, followed by a 60-mil high density polyethylene (HDPE) liner overlain by a geosynthetic secondary leachate collection system. Above this, the same system is repeated again to complete the double composite liner.

Leachate Collection and Treatment

Leachate is a liquid, primarily precipitation, that passes through the waste. The leachate collects in a combination of granular soil layers, geosynthetic drainage layers and a network of pipes that direct the liquid to sumps for removal. The sumps are fitted with pumps with automatic controls that pump the liquid from the landfill. The leachate is then pumped to the sanitary sewer system for treatment at the Great Lakes Water Authority.

Groundwater Monitoring

In accordance with EGLE regulations, the facility monitors surface water, groundwater and air emissions. There are 20 groundwater monitoring wells around the site that monitor the groundwater that flows below the landfill.

Landfill Gas Management

The gas collection system is expanded regularly and is currently comprised of approximately 175 extraction wells that are monitored monthly. The gas is collected and processed into renewable energy at an on-site gas plant. Reports are submitted to the EGLE on a semiannual basis.

Security

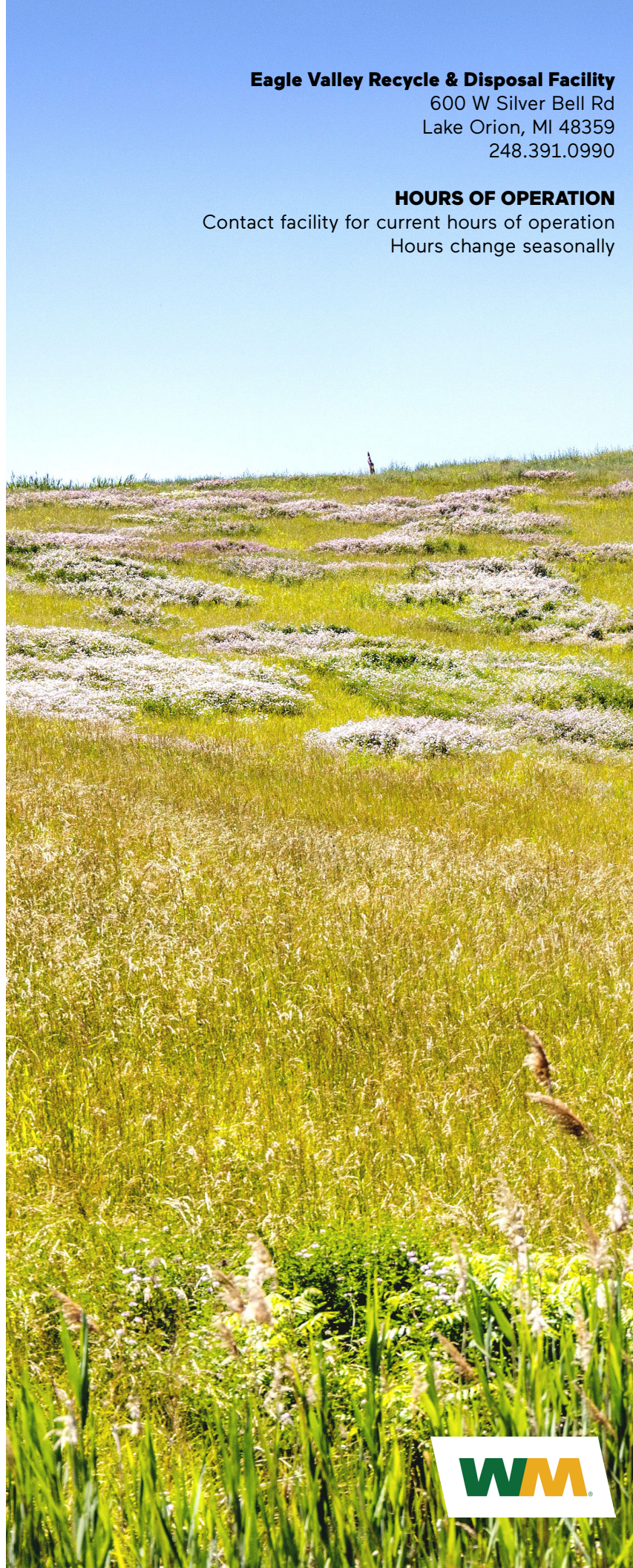
Site security is ensured by controlled, limited access to the facility through the gatehouse as well as perimeter fencing and natural barriers. During non-business hours this facility is monitored by 24-hour electronic surveillance.

Eagle Valley Recycle & Disposal Facility

600 W Silver Bell Rd
Lake Orion, MI 48359
248.391.0990

HOURS OF OPERATION

Contact facility for current hours of operation
Hours change seasonally





YEAR OPENED

1985

FACILITY ACREAGE

277.5 acres

PERMITTED FOOTPRINT

147.8 acres

REMAINING PERMITTED CAPACITY

7.5 million cubic yards

APPROXIMATE TONS PROCESSED DAILY

Approximately 500 to 3000 tons

OWNERSHIP

Waste Management of Michigan, Inc.

PERMIT TYPE & PERMIT #

Solid waste disposal operating license: 9123

REGULATORY AGENCIES

Eagle Valley is licensed by the Michigan Department of Environment Great Lakes and Energy (EGLE) and is included in the Oakland County Solid Waste Management Plan.

EMPLOYEES

12

ACCEPTABLE MATERIAL

- Asbestos - Non Friable
- Auto Shredder Fluff
- Construction & Demolition (C&D) Debris
- Crushed Empty Drums
- Industrial & Special Wastes
- Municipal Solid Wastes (MSW)
- NORM (Naturally Occurring Radioactive Material)
- Tires

UNACCEPTABLE MATERIAL

- Hazardous Waste
- Lead Acid Batteries
- Liquid Waste
- Low Level Radioactive Waste
- PCBs
- Tires - Whole
- Used Beverage Containers
- Yard Waste

RISK MITIGATION

WM provides the highest level of services, backed with state-of-the-art site design and management systems, to help minimize risks and reduce liabilities.

COMMUNITIES SERVED

WM believes in making a strong commitment to the local community. Each year, Eagle Valley participates in several programs and organizations that encourage a vital community.