

# City of Baldwin Park

## Residential Waste and Recycling Service Guide



### Create a My WM Profile

A My WM profile is an online account that allows you to access billing, pick up and holiday schedules, change services, order additional services, save payment methods and other service features to help manage your Waste Management account(s) online.

1. Enter **wm.com** into your favorite browser.
2. Click the green **Log In** button in the upper right-hand column.
3. Next to "Don't have an account?" Click **Sign Up**.
4. Enter your information to be associated with this profile.
  - Email address
  - Password
  - First and Last Name
5. Click the **Sign Up** button.



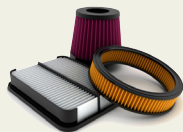
If successful, you will see an **Account Setup** page and an email will be sent to the address in your profile with the subject **Confirm Your Enrollment**. Once confirmed, you can log in, link and manage your WM account(s) online or on the my WM mobile app!

### Senior Discount

Discounted rates are available for seniors 60 years of age and older. Proof of age is required.

### Disposal of Used Motor Oil

Residents may schedule used oil pick ups on their regular trash day. All oil must be placed in a screw top container to avoid spills. Please schedule at least 48 hours before pick up day. Place all containers at the curb along side your trash cart.



### Bulky Item & Electronic Waste Collection

All residential customers have unlimited bulky item pick ups each calendar year at no additional cost. Customers may place up to three (3) cubic yards of Bulky Waste and/or E-waste out for collection per pick up. To schedule a free bulky pick up, please contact Waste Management at (800) 266-7551 at least 48 hours before the weekly Thursday pickup. All items should be placed in front of your property by Wednesday night.



*If you place an item in front of your property and do not schedule a bulky item pick up, you may receive a notice from Public Works and be charged a fee for your unscheduled pick up.*

### Holidays

WM observes the following holidays. When your collection day falls on/or after one of these holidays, your collection will be delayed by one day that week only. If a holiday falls on a Saturday or Sunday, there will be no delay.

- New Year's Day
- Memorial Day
- Independence Day
- Labor Day
- Thanksgiving Day
- Christmas Day

## What Goes in the Green Waste Cart:



YARD WASTE



**DO NOT INCLUDE:**  
PLASTIC BAGS OR FILM  
SERVEWARE/UTENSILS  
PLASTIC CONTAINERS  
FOAM CONTAINERS  
HAZARDOUS WASTE  
FATS, OILS, OR GREASES

## What Goes in the Recycling Cart:



PLASTIC BOTTLES & CONTAINERS



FOOD & BEVERAGE CANS



GLASS BOTTLES & CONTAINERS



FOOD & BEVERAGE CARTONS



PAPER



FLATTENED CARDBOARD & PAPERBOARD



**DO NOT INCLUDE:**  
FOOD OR LIQUIDS  
PLASTIC BAGS OR FILM  
FOAM CONTAINERS  
CLOTHING, FURNITURE, OR CARPET  
BATTERIES  
ELECTRONICS  
HAZARDOUS WASTE  
YARD WASTE

Place recyclables directly into your recycling cart -  
Don't bag your recycling materials.

## What Goes in the Trash Cart:



FOAM CUPS & CONTAINERS



GARDEN HOSE



BROKEN CERAMIC DISHES & POTS



CANDY, SNACK & FOOD WRAPPERS



**DO NOT INCLUDE:**  
ORGANICS/RECYCLABLES  
HAZARDOUS WASTE  
ELECTRONICS  
BATTERIES, TIRES, OR PAINT  
FLAMMABLE MATERIAL



PLASTIC BAGS OR FILM



DIAPERS



PET WASTE



CLOTHING & TEXTILES