

2025 NEVADA CITY

COLLECTION CALENDAR & SERVICE GUIDE

CART SET OUT AND SERVICE INSTRUCTIONS



Trash Recyclables Yard Waste

- ✓ Place carts in front of your house in street with wheels against the curb by 5 a.m.
- ✓ Set carts 3 feet apart, away from neighbors' cart and any obstructions. (cars & mailboxes)
- ✓ Do not overfill your carts, lids must close. (Surcharges may be applied for overfilled carts)

HOLIDAY PICKUP SCHEDULE

If your service day lands ON or AFTER any of the 3 observed holidays, service will occur one day later, including Saturday for Friday collection.

CONTACT INFORMATION

Waste Management of Nevada County
Customer Service: 530-274-3090
Monday - Friday • 8:00 a.m. – 5:00 p.m.
Website: nevadacounty.wm.com

Household Hazardous Waste
Visit the McCourtney Road Transfer Station
or call 530-274-3090.

January						
Su	Mo	Tu	We	Th	Fr	Sa
			1	2	3	4
5	6	7	8	9	10	11
12	13	14	15	16	17	18
19	20	21	22	23	24	25
26	27	28	29	30	31	

February						
Su	Mo	Tu	We	Th	Fr	Sa
						1
2	3	4	5	6	7	8
9	10	11	12	13	14	15
16	17	18	19	20	21	22
23	24	25	26	27	28	

March						
Su	Mo	Tu	We	Th	Fr	Sa
						1
2	3	4	5	6	7	8
9	10	11	12	13	14	15
16	17	18	19	20	21	22
23	24	25	26	27	28	29
30	31					

April						
Su	Mo	Tu	We	Th	Fr	Sa
		1	2	3	4	5
6	7	8	9	10	11	12
13	14	15	16	17	18	19
20	21	22	23	24	25	26
27	28	29	30			

May						
Su	Mo	Tu	We	Th	Fr	Sa
				1	2	3
4	5	6	7	8	9	10
11	12	13	14	15	16	17
18	19	20	21	22	23	24
25	26	27	28	29	30	31

June						
Su	Mo	Tu	We	Th	Fr	Sa
1	2	3	4	5	6	7
8	9	10	11	12	13	14
15	16	17	18	19	20	21
22	23	24	25	26	27	28
29	30					

July						
Su	Mo	Tu	We	Th	Fr	Sa
		1	2	3	4	5
6	7	8	9	10	11	12
13	14	15	16	17	18	19
20	21	22	23	24	25	26
27	28	29	30	31		

August						
Su	Mo	Tu	We	Th	Fr	Sa
					1	2
3	4	5	6	7	8	9
10	11	12	13	14	15	16
17	18	19	20	21	22	23
24	25	26	27	28	29	30
31						

September						
Su	Mo	Tu	We	Th	Fr	Sa
	1	2	3	4	5	6
7	8	9	10	11	12	13
14	15	16	17	18	19	20
21	22	23	24	25	26	27
28	29	30				

October						
Su	Mo	Tu	We	Th	Fr	Sa
			1	2	3	4
5	6	7	8	9	10	11
12	13	14	15	16	17	18
19	20	21	22	23	24	25
26	27	28	29	30	31	

November						
Su	Mo	Tu	We	Th	Fr	Sa
						1
2	3	4	5	6	7	8
9	10	11	12	13	14	15
16	17	18	19	20	21	22
23	24	25	26	27	28	29
30						

December						
Su	Mo	Tu	We	Th	Fr	Sa
	1	2	3	4	5	6
7	8	9	10	11	12	13
14	15	16	17	18	19	20
21	22	23	24	25	26	27
28	29	30	31			

Trash is collected weekly, Yard Waste & Recycling are collected alternate weeks.

Light Green Trash & Yard Waste Pickup Dark Blue Trash & Recycling Pickup Yellow Holiday

Please visit wm.com/mypreferences to update your contact information.



WHAT GOES WHERE? - CONTAMINATION SURCHARGES MAY BE APPLIED

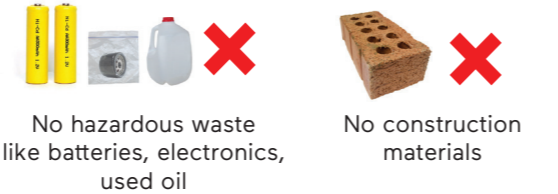
RECYCLING



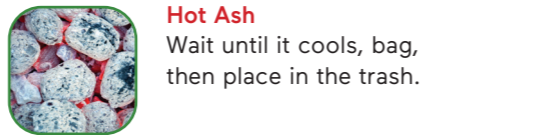
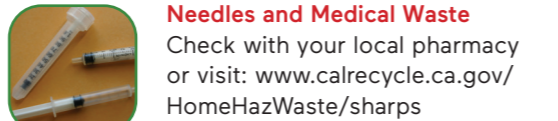
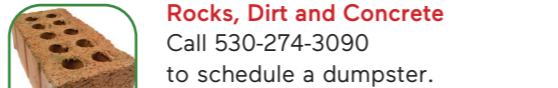
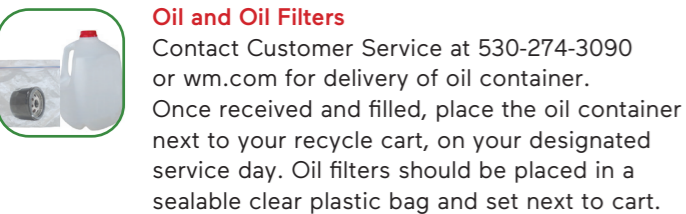
YARD WASTE



TRASH



HARD TO DISPOSE OF MATERIAL



ADDITIONAL INFORMATION

SB 1383 Update

SB1383 requires all state residents and businesses to collect and separate organic materials such as food scraps, food-soiled paper and landscape trimmings into one organics container. While Nevada City has received a temporary waiver, all residents are encouraged to compost their food scraps and donate their edible food.

Bear-Resistant Cart Service

A bear-resistant cart is designed to discourage bears from scavenging inside the container. These wildlife-resistant carts can be purchased from a number of local retailers. Upon purchase, call customer service to set up Bear Cart service for an additional small fee.

Reuse Center

The McCourtney Road Transfer Station Reuse Store offers free automotive oil, house paint, household cleansers and more. The products are free and many are unopened or nearly full. The reuse center is located at the McCourtney Road Transfer Station. (address listed to the right)

Single-Stream Recycling & Clear Bags

Bags are not acceptable in your recycling cart. Please keep recyclables loose. Do not place recyclables in clear bags. Plastic shopping bags are accepted at many grocery stores in Nevada County, where you may recycle these safely.

Download the My WM Mobile App for realtime info and to manage your services with ease.

WM LOCATIONS/CONTACT

Transfer Station/WM Recycle Center

McCourtney Road Transfer Station
14741 Wolf Mountain Road
Grass Valley, CA 95949
Wednesday - Sunday • 8 a.m. - 3:30 p.m.
Recycling Buy Back Center open during normal business hours.

Residential Comingled Drop Off

12640 Loma Rica Ave.
Grass Valley, CA 95945
Monday - Friday • 9 a.m. - 3 p.m.
Residential recycling only, no commercial recycling at this site.

North San Juan (recycling & trash site)

10125 Flume Street
North San Juan, CA 95960
Friday - Tuesday • 8:30 a.m. - 4:30 p.m.
Recycling Buy Back Center open 3rd Thursday of each month.

Washington (recycling & trash site)

15886 Gaston Road
Washington, CA 95986
Friday - Sunday • 8:30 a.m. - 4:30 p.m.
Recycling Buy Back Not Available

Online County Recycling Facility Map

<https://www.mynevadacounty.com/3111/Recycling-Resources>

Service Alert Hotline

855-963-2273

Customer Service

530-274-3090



Facebook

FOLLOW
WM NEVADA
COUNTY



Nextdoor

All other household hazardous waste (HHW) can be brought to the HHW section at McCourtney Road Transfer Station (MRTS). MRTS now accepts carpets and mattresses for free. Visit: www.wm.com/location/california/nevada_county/recycling