

# 2026 NEVADA COUNTY

## COLLECTION CALENDAR & SERVICE GUIDE

### CART SET OUT AND SERVICE INSTRUCTIONS



Trash                      Recyclables                      Organics

- ✓ Place carts in front of your house in street with wheels against the curb by 5 a.m.
- ✓ Set carts 3 feet apart, away from neighbors' cart and any obstructions. (cars & mailboxes)
- ✓ Do not overfill your carts, lids must close. (Surcharges may be applied for overfilled carts)

### HOLIDAY PICKUP SCHEDULE

If your service day lands ON or AFTER any of the 3 observed holidays, service will occur one day later, including Saturday for Friday collection.

### CONTACT INFORMATION

Waste Management of Nevada County  
Customer Service: 530-274-3090  
Monday - Friday • 8:00 a.m. – 5:00 p.m.  
Website: nevadacounty.wm.com

Household Hazardous Waste  
Visit the McCourtney Road Transfer Station  
or call 530-274-3090.

#### January 2026

S	M	T	W	T	F	S
				1	2	3
4	5	6	7	8	9	10
11	12	13	14	15	16	17
18	19	20	21	22	23	24
25	26	27	28	29	30	31

#### April 2026

S	M	T	W	T	F	S
			1	2	3	4
5	6	7	8	9	10	11
12	13	14	15	16	17	18
19	20	21	22	23	24	25
26	27	28	29	30		

#### July 2026

S	M	T	W	T	F	S
			1	2	3	4
5	6	7	8	9	10	11
12	13	14	15	16	17	18
19	20	21	22	23	24	25
26	27	28	29	30	31	

#### October 2026

S	M	T	W	T	F	S
				1	2	3
4	5	6	7	8	9	10
11	12	13	14	15	16	17
18	19	20	21	22	23	24
25	26	27	28	29	30	31

#### February 2026

S	M	T	W	T	F	S
1	2	3	4	5	6	7
8	9	10	11	12	13	14
15	16	17	18	19	20	21
22	23	24	25	26	27	28

#### May 2026

S	M	T	W	T	F	S
					1	2
3	4	5	6	7	8	9
10	11	12	13	14	15	16
17	18	19	20	21	22	23
24	25	26	27	28	29	30
31						

#### August 2026

S	M	T	W	T	F	S
						1
2	3	4	5	6	7	8
9	10	11	12	13	14	15
16	17	18	19	20	21	22
23	24	25	26	27	28	29
30	31					

#### November 2026

S	M	T	W	T	F	S
1	2	3	4	5	6	7
8	9	10	11	12	13	14
15	16	17	18	19	20	21
22	23	24	25	26	27	28
29	30					

#### March 2026

S	M	T	W	T	F	S
1	2	3	4	5	6	7
8	9	10	11	12	13	14
15	16	17	18	19	20	21
22	23	24	25	26	27	28
29	30	31				

#### June 2026

S	M	T	W	T	F	S
	1	2	3	4	5	6
7	8	9	10	11	12	13
14	15	16	17	18	19	20
21	22	23	24	25	26	27
28	29	30				

#### September 2026

S	M	T	W	T	F	S
		1	2	3	4	5
6	7	8	9	10	11	12
13	14	15	16	17	18	19
20	21	22	23	24	25	26
27	28	29	30			

#### December 2026

S	M	T	W	T	F	S
		1	2	3	4	5
6	7	8	9	10	11	12
13	14	15	16	17	18	19
20	21	22	23	24	25	26
27	28	29	30	31		

Trash and Organics is collected weekly and Recycling is collected alternate weeks.

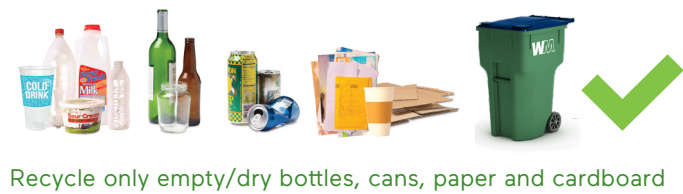
Trash & Organics Pickup      Trash, Organics and Recycling Pickup      Holiday

Please visit [wm.com/mypreferences](https://wm.com/mypreferences) to update your contact information.



WHAT GOES WHERE? - CONTAMINATION SURCHARGES MAY BE APPLIED

RECYCLING



Recycle only empty/dry bottles, cans, paper and cardboard



ORGANICS



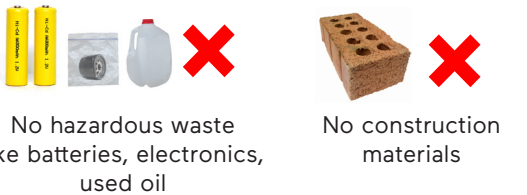
Place food waste, food-soiled paper, grass clippings, flowers and leaves, wood branches & untreated lumber in your yard waste cart. No invasive plants such as blackberry vines, scotch bloom or palm leaves.



TRASH



Place non-recyclable materials in your trash cart



HARD TO DISPOSE OF MATERIAL



Batteries, Fluorescent Bulbs and Electronics

Place household batteries in a zip lock bag on top of your recycling cart on your collection day. For electronics and fluorescent bulbs call 530-274-3090.



Rocks, Dirt and Concrete

Call 530-274-3090 to schedule a dumpster.



Needles and Medical Waste

Check with your local pharmacy or visit: [www.calrecycle.ca.gov/HomeHazWaste/sharps](http://www.calrecycle.ca.gov/HomeHazWaste/sharps)



Hot Ash

Wait until it cools, bag, then place in the trash.



Oil and Oil Filters

Contact Customer Service at 530-274-3090 or [wm.com](http://wm.com) for delivery of oil container. Once received and filled, place the oil container next to your recycle cart, on your designated service day. Oil filters should be placed in a sealable clear plastic bag and set next to cart.

ADDITIONAL INFORMATION

Food Waste Collection

SB1383 requires all state residents and businesses to collect and separate organic materials such as food scraps, food-soiled paper and landscape trimmings into one organics container. Nevada County residents are now asked to place their food scraps and food-soiled paper in their existing or newly delivered green cart.

Bear-Resistant Cart Service

A bear-resistant cart is designed to discourage bears from scavenging inside the container. These wildlife-resistant carts can be purchased from a number of local retailers. Upon purchase, call customer service to set up Bear Cart service for an additional small fee.

Reuse Center

The McCourtney Road Transfer Station Reuse Store offers free automotive oil, house paint, household cleansers and more. The products are free and many are unopened or nearly full. The reuse center is located at the McCourtney Road Transfer Station. (address listed to the right)

Bag & Tag Stickers (FOR HOUSEHOLD TRASH ONLY)

Excess waste contained in a 32-gallon garbage bag (max. weight 40 lbs.) can be placed at the curb by using one of the 12 stickers (mailed annually). Max 3 bag limit per pickup day. Place bag next to trash cart on your normal service day. While you may still use any stickers remaining from the previous year, please note that they will be valid only for household trash and may not be used for recycling or green waste.

Vouchers

Customers that are current with their bill can access the McCourtney Rd. Transfer Station for free disposal of up to two cubic yards of solid waste one time per year. Must present voucher.

Single-Stream Recycling & Clear Bags

Bags are not acceptable in your recycling cart. Please keep recyclables loose. Do not place recyclables in clear bags. Plastic shopping bags are accepted at many grocery stores in Nevada County, where you may recycle these safely.

WM LOCATIONS/CONTACT

Transfer Station/WM Recycle Center

McCourtney Road Transfer Station  
14741 Wolf Mountain Road  
Grass Valley, CA 95949  
Wednesday - Sunday • 8 a.m. - 3:30 p.m.  
Recycling Buy Back Center open during normal business hours.

Residential Comingled Drop Off

12640 Loma Rica Ave.  
Grass Valley, CA 95945  
Monday - Friday • 9 a.m. - 3 p.m.  
Residential recycling only, no commercial recycling at this site.

North San Juan (recycling & trash site)

10125 Flume Street  
North San Juan, CA 95960  
Friday - Tuesday • 8:30 a.m. - 4:30 p.m.  
Recycling Buy Back Center open 3rd Thursday of each month.

Washington (recycling & trash site)

15886 Gaston Road  
Washington, CA 95986  
Monday, Friday & Saturday • 8:30 a.m. - 4:30 p.m.  
Recycling Buy Back Not Available

Online County Recycling Facility Map

<https://www.mynevadacounty.com/3111/Recycling-Resources>

Service Alert Hotline

855-963-2273

Customer Service

530-274-3090



Facebook

FOLLOW  
WM NEVADA  
COUNTY



Nextdoor



Download the My WM Mobile App for realtime info and to manage your services with ease.

All other household hazardous waste (HHW) can be brought to the HHW section at McCourtney Road Transfer Station (MRTS). MRTS now accepts carpets and mattresses for free. Visit: [www.wm.com/location/california/nevada\\_county/recycling](http://www.wm.com/location/california/nevada_county/recycling)