



Oceanside
Multi-Family
Recyclables, Food
Scraps and Landfill
Service Guide



Helping Multi-Family Complexes *Succeed*

The City and WM have partnered to provide exceptional recycling, food scraps and solid waste programs to help multi-family properties and their residents meet all compliance needs.

California Senate Bill 1383 (SB 1383) and the City of Oceanside require all businesses and multi-family properties to subscribe to collection services and properly separate food scraps and food-soiled paper, recycling and landfill materials.



Join Us on the Journey to Zero Waste

Taking steps in your daily routine to reduce and eliminate waste is easy to do. This guide is a useful resource to help you set waste prevention and diversion goals and comply with SB 1383.

Who is This Guide For? *

All complexes can benefit from this guide.



* Multi-family dwellings/properties are considered any residential premises, other than a single-family premise, with five (5) or more dwelling units used for residential purposes that receive centralized or shared collection service for all units on the premises that are billed to one (1) customer at one (1) address.

Here's How to *Recycle Right* at Your Complex

Residents

Request waste and recycling information from your property manager. Move-In Kits are available to you and include a recycling resource guide, reusable tote bag to separate recycling, a kitchen pail and a handy magnet that shows how to properly sort your materials.

Know what materials are acceptable in all containers and what to do with household hazardous waste and other items not accepted curbside. **Know the location** of the outside food scraps, recycling and landfill containers nearest you.

Recycle cardboard boxes by flattening and placing them in the recyclables container. Be sure the container does not overflow and the lid will close. If your boxes do not fit, check if there is another recyclables container at the complex or bring the boxes to a local recycling center.

Schedule a large item pick up. Large items such as furniture, appliances and other similar household items can be scheduled for collection at no charge by contacting WM at (760) 435-5457 or donate/offer for free.

Property Managers

Schedule FREE technical assistance by contacting WM's Zero Waste Technical Assistance Team at Oceansidezerowaste@wm.com. They can help set up a recycling program at your multi-family complex and right-size your service by helping you identify the right number and type of containers and necessary level of service that will help you avoid potential overloaded and contaminated containers.

Introduce new residents to your property's recycling program as soon as they move in. WM provides FREE educational materials and presentations as well as multi-family Move-In Kits for you to distribute to help your residents be successful in complying with recycling laws. *See page 10.*

Display signage for a successful recycling program. WM containers include signage on what materials are accepted in them. If signage becomes worn out or hard to read, contact WM for replacement signage. WM also offers metal signs for enclosures.

Communicate to residents how and where they can properly dispose of large items such as furniture, appliances and similar items at your property. Determine if property management or the resident will be responsible for scheduling WM to collect the items on service day.

Move In, Move Out TIPS



Donate old or unwanted goods, clothing, electronics, small appliances and furniture.



Post unwanted goods on Facebook Marketplace, Offer Up, Freecycle, Craigslist and other buying/selling platforms.



Plan ahead and start collecting boxes and newspapers to wrap items.



Recycle all cardboard boxes and newspapers and flatten boxes to save space in the Recyclables container.



Arrange for a bulky item pickup by contacting WM at (760) 435-5457 (you may need to coordinate with your property manager). Leaving bulky items behind is considered illegal dumping.

Multi-Family Waste and Recycling Service Options

The City of Oceanside requires all multi-family properties to subscribe to collection services and properly separate recycling, food scraps and food-soiled paper, green waste and landfill materials. These services must be made accessible to residents.

Container Sizes

RECYCLABLES	FOOD SCRAPS	LANDFILL	GREEN WASTE
			
35-, 64- & 96-gallon Recyclables Cart	64-gallon Food Scraps Recycling Cart	35-, 64- & 96-gallon Landfill Cart	35-, 64- & 96-gallon Green Waste Cart
			
2-, 3-, 4- & 6-cubic yard Recyclables Bin	2-cubic yard Food Scraps Recycling Bin	2-, 3-, 4- & 6-cubic yard Landfill Bin	3-cubic yard Green Waste Bin

Properties with Limited Space

A split bin (recyclables and landfill) option is available.



3-cubic yard
Recyclables & Landfill
Split Bin

Minimum Service Levels

- Multi-family complexes with eight or less dwelling units require two units of commercial cart service for every four dwelling units. Complexes with nine or more dwelling units require bin/dumpster service.
- If services are deemed to be inadequate or create a public nuisance, the City reserves the right to adjust services.

Commercial Cart Service – Commercial cart services are reserved for multi-family complexes with eight or less dwelling units. One unit of commercial cart service includes one 64-gallon Food Scraps Recycling cart, one 96-gallon Recyclables cart and one 96-gallon Landfill cart serviced once per week.



Green Waste Service – If your property generates green waste from landscaping, you are required to separate and recycle this material either by self-hauling, contracting with a landscaping company or subscribing to green waste collection through WM. If using a landscaping company, a form is required to be on file with the City of Oceanside. Contact the City at (760) 435-4500.

Bin Cleaning and Graffiti Removal – Your services include an annual bin cleaning and graffiti removal as needed. Contact WM at (760) 435-5457 for more information.

Contamination Management – When trash and other non-acceptable materials (contamination) are mixed in with recyclables or food scraps, it can potentially contaminate the entire load into trash and result in the entire load being disposed in a landfill. If recyclables or food scrap containers are identified as having contamination at the time of collection, businesses will be issued a contamination notice. Potential charges will apply if the business has been notified of the contamination three or more times.

Container Overflow Prevention – All food scraps, recyclables and landfill waste must fit into the containers with the lid closed. Additional pickups may be scheduled for a fee if extra service is needed. See page 10 for WM assistance to tailor services to help prevent container overflow.



WHAT Goes WHERE?

How to correctly sort and avoid contamination

Correctly sorting to avoid
contamination is key
to **SUCCESS!**



RECYCLABLES



Keep materials clean and dry. Break down boxes.
NO plastic straws, film plastic or polystyrene foam
food containers in recycling.

FOOD SCRAPS



Clear or translucent plastic bags/liners
and compostable plastic bags are
allowed but not preferred.

LANDFILL



No hazardous waste
or construction
and demolition materials.

GREEN WASTE



If your property generates green waste
from landscaping, you are required to
separate and recycle this material.

Keep Food Scraps and Food-Soiled Paper *Out of the Landfill*

All Oceanside multi-family households are required to recycle food scraps and food-soiled paper. Doing so preserves landfill space, reduces greenhouse gases, creates a renewable energy source and mulch and compost.

How to Recycle Your Food Scraps and Food-Soiled Paper

1

Use the Kitchen Pail:

Add food scraps and soiled paper directly to the container as you prepare meals and clean up after eating.



Use a Liner: Kitchen pails can be lined with a paper towel, napkin or scrap paper, paper bag, clear and translucent plastic liner/bag, or compostable bag; this helps absorb moisture and contain materials.

2

Collect as You Go: Add food scraps and food-soiled paper directly to the container as you prepare meals and clean up after eating.



3

Empty When Full: When the pail is full, transfer the contents to your complex's brown Food Scraps container where WM will collect it.



Did You Know?

In the U.S. about
40%
of the food grown is never eaten and is **thrown out**.

Organics like food scraps, food-soiled paper and green waste are
the largest waste types
in landfills.

Here's What Goes in the Brown Food Scraps Container



WM collects food scraps and food-soiled paper in your complex's brown Food Scraps container.

✓ YES



✗ NO



Clear and translucent plastic bags/liners and compostable bags are allowed but not preferred.

Why is Organics Recycling So Important?

By participating in recycling food scraps and food-soiled paper, you are complying with SB 1383, a statewide effort requiring residents and businesses to separate their food scraps and green waste from their landfill waste with the goal of **reducing the amount of organic waste disposed of in landfills by 75% by 2025**.

75%
↓

WM and the City of Oceanside are providing the Food Scraps Recycling Program for all multi-family complexes and businesses and an Organics program for single-family residents to comply with SB 1383 and make Oceanside a more sustainable and thriving community for everyone. These programs also support the City's zero waste and climate action goals.

Mulch and Compost Are Available for FREE to Oceanside Residents



El Corazon Compost Facility
3210 Oceanside Blvd.
Visit agriserviceinc.com or call (760) 439-9920 for open hours and information.

Extra Collection Services *and More!*

Residents

Residents can take advantage of **FREE** programs, services and workshops to help manage your household waste and keep Oceanside beautiful.

Donation Opportunities – Gently used appliances, textiles, sporting equipment and more can be donated curbside during the City’s biannual donation weeks. More information can be found at GreenOceanside.org.

Large Item Landfill and Electronic Waste Collection – Up to five (5) large items beyond reuse, refurbishment or repair such as furniture, appliances and electronic waste can be collected five (5) times per household each year at no charge. Schedule a collection by contacting WM at (760) 439-2824.

Holiday Tree Collection – Holiday tree collection begins the weekday following Christmas Day for a three-week period. Check with your property management on where to place trees for collection. Remove tree stands and decorations. Flocked trees are accepted but not recycled.

Sharps Disposal – Place sharps in a rigid container that has a secure and closed lid. Drop off at either **Oceanside Senior Centers** at 455 Country Club Lane or 3302 Senior Center Drive during normal business hours.

Household Hazardous Waste – Household chemicals and other toxic materials are illegal to place in WM containers. WM will accept and safely dispose of these materials every other Saturday by appointment only. Call to schedule a drop-off appointment at (760) 439-2824. Seniors or disabled persons can make a reservation for a free collection by calling (760) 439-2824.

Green Oceanside Workshops and Events – Green Oceanside offers an array of programs, events, volunteer opportunities and educational resources for residents. Visit GreenOceanside.org to view upcoming workshops, events, view past trainings or download free educational resources.

Property Managers

Large Item Landfill and Electronic Waste Collection – Items such as furniture, appliances (stoves, refrigerators), carpets, computers, monitors, televisions and phones that are generated by the multi-family business and not resident generated may contact **WM** at (760) 435-5457 for a collection. *There is a fee for this service.*

Holiday Tree Collection – Holiday tree collection begins the weekday following Christmas Day for a three-week period. WM will collect holiday trees at multi-family properties at centralized areas on the property. Contact WM to coordinate that location. Residents should be advised where the designated tree drop off is located, to remove tree stands and decorations, and that flocked trees are accepted but not recycled.

Hazardous Waste & Universal Waste – Hazardous and universal waste generated by the multi-family business and not resident generated may contact **WM Industrial Solutions** at (562) 427-7277 to schedule a service. These items include paint, used oil and filters, batteries, fluorescent bulbs and lamps, cleaners and pesticides. *There is a fee for this service.*

Accepted Resident Generated Hazardous Materials

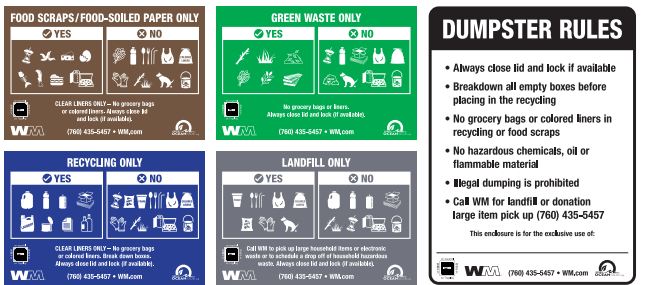
- Paint, Stain Varnish, Thinner
- Adhesives
- Auto Products, Used Oil, Filters
- Batteries, Fluorescent Bulbs, CFLs
- Cleaners, Sprays
- Pesticides, Other Garden Chemicals
- Sharps: Needles, Lancets

FREE Programs and Resources for Multi-Family Property Managers

Multi-Family Move-In Kits – Contact WM to order move-in kits for your residents. The kits include helpful tools and information to help residents be successful in complying with recycling laws.



Enclosure Signs – WM offers enclosure signs upon request to educate residents how to properly sort their recycling and waste.



Education Materials – Posters, videos and handouts are available to teach residents and janitorial staff how to correctly sort materials and avoid contamination.



Training – Virtual or in-person training and presentations are available to provide technical assistance and support to your residents and managers.



Rightsize for Success – We will analyze your waste streams and help identify and select the best services that match the type and amount of waste your property produces. In Oceanside, recycling and food scraps services are **MORE AFFORDABLE** than landfill services, so sorting properly can minimize landfill services and can create ways to save.

Servicing for Limited Areas – If you have limited space for your recyclables, food scraps and landfill containers, our technical assistance team will help identify ways to accommodate your service needs.



To Request These Free Services

Contact the WM Technical Assistance Team:
Email: oceansidezerowaste@wm.com
Phone: (760) 435-5457
Website: business.wm.com/oceanside



WM of North County
2141 Oceanside Blvd
Oceanside, CA 92054



Not sure what goes where?
The **WASTE WIZARD** can tell you how
something can be reused, repaired,
donated, recycled or disposed of.
Scan QR code for more information.

Contact Information

Services and Billing

WM of North County
2141 Oceanside Blvd, Oceanside, CA 92054
Phone: (760) 435-5457
Email: cssandiego@wm.com
Website: business.wm.com/oceanside

Mulch and Compost

Email: greenoceanside@oceansideca.org
El Corazon Compost Facility
3210 Oceanside Blvd., Oceanside, CA 92056
Phone: (760) 439-9920
Web: agriserviceinc.com
Mon-Fri, 7:30 a.m. – 5 p.m.
Sat, 8 a.m. – 4 p.m.

City of Oceanside's Zero Waste and Environmental Programs

Green Oceanside Team
Phone: (760) 435-4500
Email: GreenOceanside@oceansideca.org
Web: www.GreenOceanside.org

