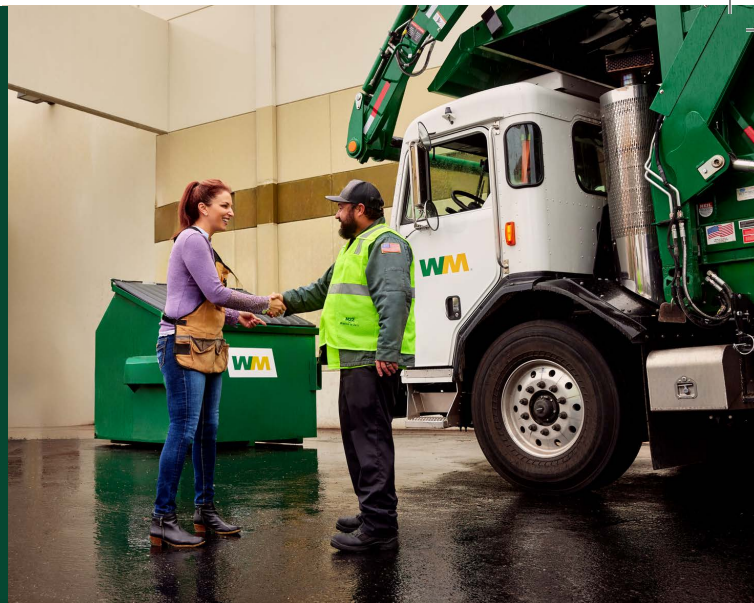


Simi Valley

2025 Summer Commercial Recycling News



WM is proud to offer commercial waste and recycling services in Simi Valley. We are available to assess your waste generation needs and determine the right container sizes and service levels for your business or property.

SAVE THE DATE! Contamination Monitoring Workshop

Join us for this informative workshop to learn more about contamination monitoring and how you can help keep our community clean and sustainable!

Hosted by: WM in collaboration with the City of Simi Valley

Date: Tuesday, July 29, 2025

Times: 10 a.m. & 6 p.m.

Location: Simi Valley City Hall, Community Room, 2929 Tapo Canyon Road, Simi Valley, CA, 93063

Container Accessibility

Please ensure that containers are accessible on your regularly scheduled collection day(s), and that gates are open or that our driver has a key or gate code. Please ensure that cars, delivery trucks, excessive trash or other obstructions do not prevent access to your container

Technical Assistance

In addition to helping you select the right container sizes and service levels, our team can help train your business and employees to know which materials go in which cart. We can help you become compliant by providing the following:

- Onsite training
- Videos and Resources
- Virtual Training
- Phone Consultation
- Signage and Posters

Be Mindful of Overages

To ensure your container is properly serviced, ensure that all items are placed inside the container.

Bags outside of your regular container or inside your container that prohibit the lid from laying flush is considered an overage.



LIKE THIS



NOT LIKE THIS

SB 1383: Smart Sorting for Organics and Recycling

California's SB 1383 requires cities and waste haulers to take action to reduce greenhouse gas emissions by diverting organic waste from landfills. The law also requires monitoring of recycling and organics containers to prevent contamination and ensure proper sorting.

What's Contamination?

It's when the wrong items—like trash—end up in your recycling or organics containers. Avoid contamination by sorting waste correctly and placing the right items in the right container.



business.wm.com/simi-valley





Most Common Contaminants

Keep these common contaminants OUT of your recycling bin.



No Recyclables In Plastic Bags

Empty recyclables directly into your bin and leave the plastic bag out.



No Food & Liquids

Compost instead! Otherwise it belongs in the trash.



No Electronics & Small Appliances

Donate if in good condition, or schedule a bulky item pickup, if available. **Check earth911.com** for a local drop-off site.



No Textiles, Bedding, Rugs & Carpet

Donate these items if they are in good condition. Large quantities may require special disposal.



No Tangles, Holiday Lights, Hangers & Extension Cords

They wrap around equipment and can shut down an entire facility! They all go in the trash.



No Plastic Bags, Film/ Sheeting & Flexible Film Packaging

Take plastic bags back to local retailers to keep them out of the recycling stream. Visit plasticfilmrecycling.org to find a drop-off location near you.



No Paper Napkins, Plates, Cups & Tissues

Compost if possible, and remember to recycle the cardboard tube.



No Polystyrene Foam

Foam and plastic containers are not recyclable curbside. Find drop-off programs for items like foam packing peanuts at earth911.com.



No Tires, Auto Parts & Scrap Metal

(Not in recycling or trash.) All can damage equipment and are safety hazards. Contact your local scrap recyclers or retail tire stores for recycling options, or check earth911.com for a drop-off center near you.



No Concrete, Wood & Construction Debris

Can damage equipment & are safety hazards. You may be able to schedule a bulky item pickup - otherwise throw it in the trash or order a roll off bin by contacting Waste Management Customer Service.



No Yard Waste & Wood

Compost or put in your yard waste cart, if available. Otherwise it belongs in the trash.



No Non-Recyclable Plastic

Not everything that is plastic is recyclable! Recycle only food & beverage bottles, jugs and tubes.

Organics | Recycling | Trash

Right Materials - Right Container - Know Which Container to Use

What Goes in the Organics Container:



Food Waste



Yard Waste



Produce



Food Soiled Paper,
Coffee Filters & Tea Bags



Meat, Fish & Poultry



Dairy



Bread, Pasta, Rice & Grains



Do Not Include:

Plastic Film
Serveware/Utensils
Plastic Containers
Foam Containers Hazardous
Waste
Fats, Oils, or Greases

Food scraps must be contained in a plastic or paper bag before placing in your organics cart.

What Goes in the Recycling Container:



Plastic Bottles &
Containers



Food & Beverage
Cans



Glass Bottles &
Containers



Paper



Flattened Cardboard
& Paperboard



Do Not Include:

Food Or Liquids
Plastic Bags or Film
Foam Containers
Clothing, Furniture or Carpet
Batteries
Electronics
Hazardous Waste
Yard Waste

Place recyclables directly into your recycling cart - **Don't bag your recycling materials.**

What Goes in the Trash Container:



Foam Cups &
Containers



Garden Hose



Broken Ceramic
Dishes & Pots



Candy, Snack &
Food Wrappers



Plastic Bags & Film



Diapers



Pet Waste



Clothing & Textiles



Do Not Include:

Organics/Recyclables
Hazardous Waste
Electronics
Batteries, Tires or Paint
Flammable Material



business.wm.com/simi-valley

