



SB 1383 Contamination Monitoring & Overage Workshop

In collaboration with



July 10, 2025





AGENDA

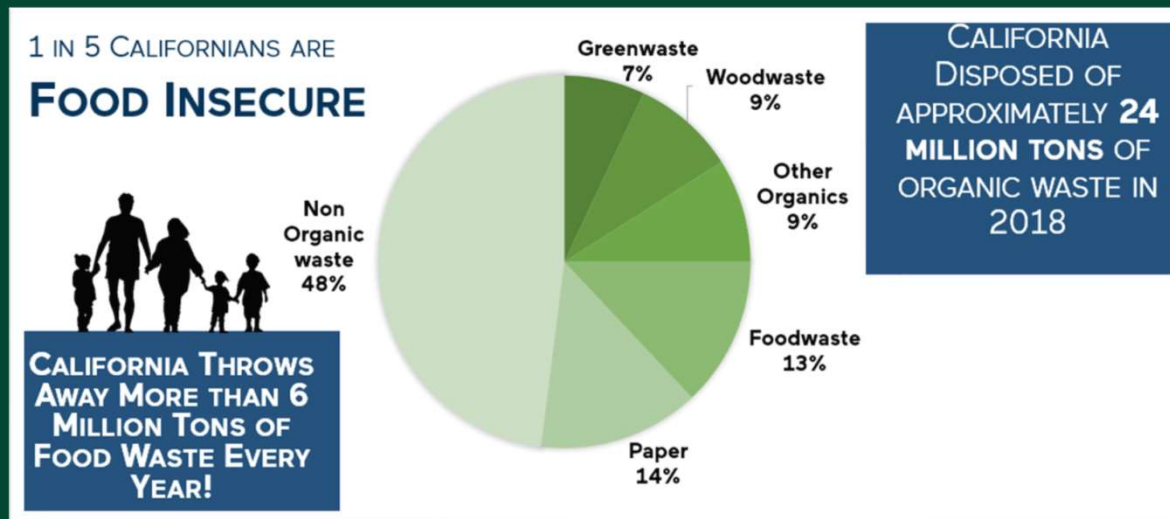
- *What is SB 1383, & What does it mean for me?*
- *SB 1383 Contamination Monitoring. What is Contamination and Overage?*
- *Recycling: The Myth, The Reality. Where do my recyclables go?*
- *What goes where? Three simple rules of recycling & Free your recyclables – don't bag them!*
- *What is Organic waste? Bag your food waste*
- *Value Added Benefits*
- *Q & A*

SB 1383

Objectives

- Reduce short-lived climate pollutants by reducing organic waste in landfills
- Divert and recover edible food to reduce food waste
- Achieve a 75% reduction in the statewide disposal of organic waste in landfills to significantly decrease greenhouse gas emissions and enhance sustainability efforts.

Organic Waste Is the Largest Waste Stream in California



What does this mean for me?

Jurisdiction Requirements

All California residents, businesses, and multifamily complexes must separate food and yard waste from trash and place it in a separate organics cart.

A **monitoring and enforcement program** will be in place to reduce contamination in recycling and organics carts.

A **three-cart system** will be used for all sectors to sort solid waste. Residential carts must be color-coded consistently across the state by 2036.

- **Black Lid = Trash**
- **Green Lid = Organics**
- **Blue Lid = Recycling**





SB 1383 CONTAMINATION MONITORING



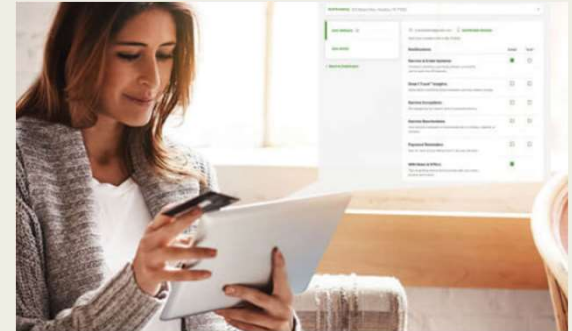
BUILDING CLEANER, MORE SUSTAINABLE COMMUNITIES



WM Smart Truck™ technology captures footage of containers as they are collected during service.



A team of technicians reviews the footage for each address to ensure materials were placed in the right cart and collected properly.



If a container is overloaded or contains unacceptable materials, we'll send a notification by mail or email.

WM Smart Truck® Camera Angles

Rear View

Angled Side View

Top Hopper View

Angled Hopper View

Curbside View



CUSTOMER NOTIFICATION



[REDACTED]

[REDACTED]

P.O. BOX 589

[REDACTED]

[REDACTED]

17015496

215087263003

Dear [REDACTED]

The photo below is a picture of your recycling container at 13346 LIMONITE AVE when it was serviced on 11/24/2023 15:19:50. Upon arrival of our recycling truck, it was determined that contamination, meaning trash in the recyclables, was present.

This letter will serve as a notification that your next invoice may include applicable charges for contamination found in your container at the time of service. You can easily avoid contamination charges in the future by keeping your recycling container free from trash and other contaminants. To learn how, visit www.recycleoftenrecyclerright.com to find educational tools that are tailored for your business.

Remember these simple rules for successful recycling in the future:

- Do recycle all empty bottles, cans, paper and cardboard.
- Do keep foods and liquids out of recycling.
- Do keep plastic bags out of recycling.
- Don't bag your recyclables.
- Don't assume its recyclable, when in doubt, throw it out.

We are committed to helping you improve the quality of your recycling materials, prevent contamination charges, and manage a sustainable program.



Stay Clear of Contamination

Only place acceptable materials in your Recycling Cart.



Do Not Include In Your Recycling Container



NO Food or Liquid



NO Foam Cups & Containers
Dispose in trash.



NO Loose Plastic Bags or Film



NO Yard Waste
Dispose in organics bin.



NO Clothing, Furniture & Carpet



NO Holiday Lights



NO Scrap Metal



NO Hazardous Waste or Batteries



NO Bagged Recyclables
Keep recyclables loose in your cart. Bagged recyclables are mistaken as trash on the sorting line.

Stay Clear of Contamination

Only place acceptable materials in your Organic Cart.



Do Not Include In Your Organics Container



**NO Plastic Bottles
or Containers**



NO Glass Bottles



NO Aluminum Cans



NO Foam Cups & Containers



**NO Hazardous Waste
or Batteries**



NO Pet Waste

Stay Clear of Contamination

Only place acceptable materials in your Trash Cart.



Do Not Include In Your Trash Container



NO Electronics & Small Appliances

Donate if in good condition, or schedule a bulky item pickup, if available.



NO Tires



NO Hazardous Waste or Batteries



NO Flammable Material



NO Yard Waste

Dispose in organics bin.



NO Paint

WHAT IS OVERAGE?

Overfilling occurs when too many materials are placed in a single container, and the lid is unable to close completely.

Bin Basics



SB 1383 CONTAMINATION MONITORING TIMELINE

1st & 2nd Incident:

- Contaminated carts will be serviced, unless it is unsafe to do so.
- A letter will be mailed (or emailed for paperless billing) to warn of potential fines for future incidents.
- The letter/email will include a photo of the contaminated cart.

3rd & Subsequent Incidents:

- Contaminated carts will be serviced, unless it is unsafe to do so.
- A letter or email will be sent with a photo of the contaminated cart.
- A Contamination Cart Fee of \$7.15 will be applied for each instance.

Based on a 12-month period beginning October 1, 2025



Aug. 1 – Sept. 30

60-day Education
Warning Period



Contamination
Fees Begin

Oct. 1

Local Recycling Operations

- Process 600 tons/day
- Cooled sort rooms
- Non-wrapping auger screens
- Seven optical sorters
- Five robot sorters w/ A.I. Cameras
- 2 A.I. Composition Cameras



Recovering More Materials



WM collected over 4,000 tons of recyclables in Westlake Village last year



State-of-the-Art (SOTA) Recycling plants are improving diversion



750,000 tons/year processed in California alone



80% of all materials recovered are kept in North America, with 100% of plastics

RECYCLING MYTHS



RECYCLING
ARROWS(MOBIUS LOOP) ON
A CONTAINER MEAN IT IS
RECYCLABLE.



EVEN IF AN ITEM SHOULDN'T
GO IN THE BIN, IT WILL GET
SORTED ANYWAY.



HOSES, TANKS, SHOWER
CURTAINS, SWING SETS,
ETC. ARE MADE OF PLASTIC,
SO THEY MUST BE
RECYCLABLE.

ORGANICS | RECYCLING | TRASH

Right Materials. Right Container. Know Which Container to Use.

Place Organics, Recycling and Trash containers together with proper signage so everyone places the right materials in the right container.

What Goes in the Organics Container:



YARD WASTE
Grass Clippings, Leaves, Small Branches



FOOD WASTE



MEAT, FISH & POULTRY



DAIRY



FOOD SOILED PAPER



DO NOT INCLUDE:

- NO LOOSE PLASTIC BAGS
- NO SERVWARE/UTENSILS
- NO PLASTIC CONTAINERS
- NO FOAM CONTAINERS
- NO HAZARDOUS WASTE

Please place yard waste directly into the organics container. Ensure food scraps are placed in a plastic bag or paper bag before placing in your organics container.

What Goes in the Recycling Container:

Place recyclables directly into your recycling container - don't bag your recyclables.



FLATTENED CARDBOARD



PLASTIC BOTTLES & CONTAINERS



GLASS BOTTLES & CONTAINERS



PAPER



FOOD & BEVERAGE CANS



DO NOT INCLUDE:

- NO LOOSE PLASTIC BAGS
- NO FOAM CONTAINERS
- NO CLOTHING, FURNITURE OR CARPET
- NO HAZARDOUS WASTE

What Goes in the Trash Container:



BUBBLE WRAP, PLASTIC FILM & PLASTIC BAGS



FOAM CONTAINERS



GARDEN HOSE



CANDY, SNACK & FOOD WRAPPERS



DO NOT INCLUDE:

- NO ORGANICS/RECYCLABLES
- NO HAZARDOUS WASTE
- NO ELECTRONICS
- NO BATTERIES, TIRES OR PAINT
- NO FLAMMABLE MATERIAL



Let's Get Back To The Basics Of Recycling

Remember these three simple rules each time you recycle:



Recycle clean
bottles, cans, paper
and cardboard.



Keep food and
liquid out of your
recycling.



No loose plastic
bags and no bagged
recyclables.

**RECYCLE
RIGHT** 

To learn more,
visit wm.com/recycleright

© 2022 Intellectual Property Holdings, L.L.C.



Free Your Recyclables

**Don't Bag Recyclables -
Place items directly in
recycling container.**





What is Organic Waste?



Food Waste Recycling

Organic waste is any material that is biodegradable and comes from either a plant or an animal that can be broken into carbon dioxide, methane or simple organic molecules.

- **Food scraps**
 - ✓ Eggshells
 - ✓ Bones
 - ✓ Coffee grounds
 - ✓ Poultry & meat



- **Food-soiled paper**
 - ✓ Paper plates
 - ✓ Sandwich paper
 - ✓ Tea bags
 - ✓ Egg cartons
 - ✓ Paper towels

- **Yard trimmings**
 - ✓ Grass clippings
 - ✓ Leaves
 - ✓ Plants
 - ✓ Branches

Recycling Food Waste at Home



How do I recycle my foodwaste?

You can easily recycle food waste in your existing **organics recycling** cart. Please make sure you bag your food waste before tossing it in the container.

Tip:

Plastic bags don't have to be biodegradable or compostable for storing food scraps.



Did you know...?

How long does it take to fully decompose?

Food waste - 6 Months



Aluminum Can - 100 Years



Paper - 2 to 4 Weeks



Milk cartons (wax coated) - 5 Years



Leather Boot - 50 Years



Glass Bottles and Styrofoam - FOREVER



Plastics - 450 Years





More Than Just A Service Provider



Value Added Benefits

Bulky Item Pickup

Residents can request two free pickups per year, with a maximum of six items or 10 32-gallon bags per pickup. Additional pickups are available for a fee. Schedule via your My WM account.

Senior Discount

A 10% senior discount is available for residents aged 62 or older who have an individual service account and are the account holder. Excludes Low-Income Discount Program participants. Download the form at home.wm.com/westlake-village or visit the WM G.I. Office.

Temporary Bin & Roll-Off Service

Large Bins are available for rent to help you dispose of waste from home remodeling, major landscaping, roofing, or other big household projects. Visit dumpster.com for more information.

Household Hazardous Waste Home Collection Service

Residents can schedule free curbside pickup of Household Hazardous Waste on the fourth Wednesday of each month. To arrange a pickup, visit www.wmatyourdoor.com or call (800) 449-7587 Monday through Friday from 5 a.m. to 5 p.m.

Kitchen Food Waste Pail & Home Compost Bin

Request a free countertop food waste pail or home compost bin for organic composting at home at home.wm.com/westlake-village

Free Landfill Days

Dispose of two loads at the Simi Valley Landfill on Sundays, April 13, June 15, and September 21, from 10 a.m. to 4 p.m. ID required. For more info, visit the website.

Free Compost Days

This is a self-service event where residents of Westlake Village can scoop and grab free compost on April 13 and September 21, 2025, at the Simi Valley Landfill and Recycling Center from 10 a.m. to 4 p.m. Please bring shovels, gloves, and sturdy containers.

Free Shred Event

Residents can bring documents for secure shredding twice a year, in April and October.

Additional Services

More information is available by visiting home.wm.com/westlake-village

Thank You!



Brian Neiens

Public Sector Manager

bneiens@wm.com



Stephanie Jamison

Recycling Education Rep

sjamiso1@wm.com



City of Westlake Village
WM Services



City of Westlake Village
City Website

WM Customer Service (805) 522-9400 | home.wm.com/westlake-village

