



City of Romulus

2025 Service Information



Dear Romulus Residents,

The City's solid waste program offers not only curbside pickup of trash, but also yard waste and recyclable materials. These services are available to all residential property owners.

Romulus residents can also schedule pickup for larger items, purchase permits to utilize the landfill, and dispose of brush and branches following the guidelines outlined in this flyer. I encourage you to retain the flyer for reference, contact WM should you need further details, or contact my office for assistance.



In closing, to keep our community clean of trash and debris, it takes all of us working together. I ask that you please **bag** all trash before placing it in your curbside pick-up bins. By bagging your trash, you will help to ensure it is properly *dumped into the collection trucks and not falling onto the roadside*. Thank you to all our residents who have adopted this practice. Together as a community focused on keeping "R" community clean – simply bagging your trash is a small extra step making a big impact.

1Romulus,

Mayor Robert A. McCraight

Collection Information and Service Guidelines

Trash Collection

- Each household should continue to utilize its existing 64- or 96-gallon cart with green lid for trash collection.
- For safety and efficiency, please place trash in your WM-provided cart. Up to four additional bags placed outside the cart will be collected.
- Please bag your trash and tie the bags before placing them inside your cart.
- Residents aged 65+ may request a smaller 64-gallon cart at any time.

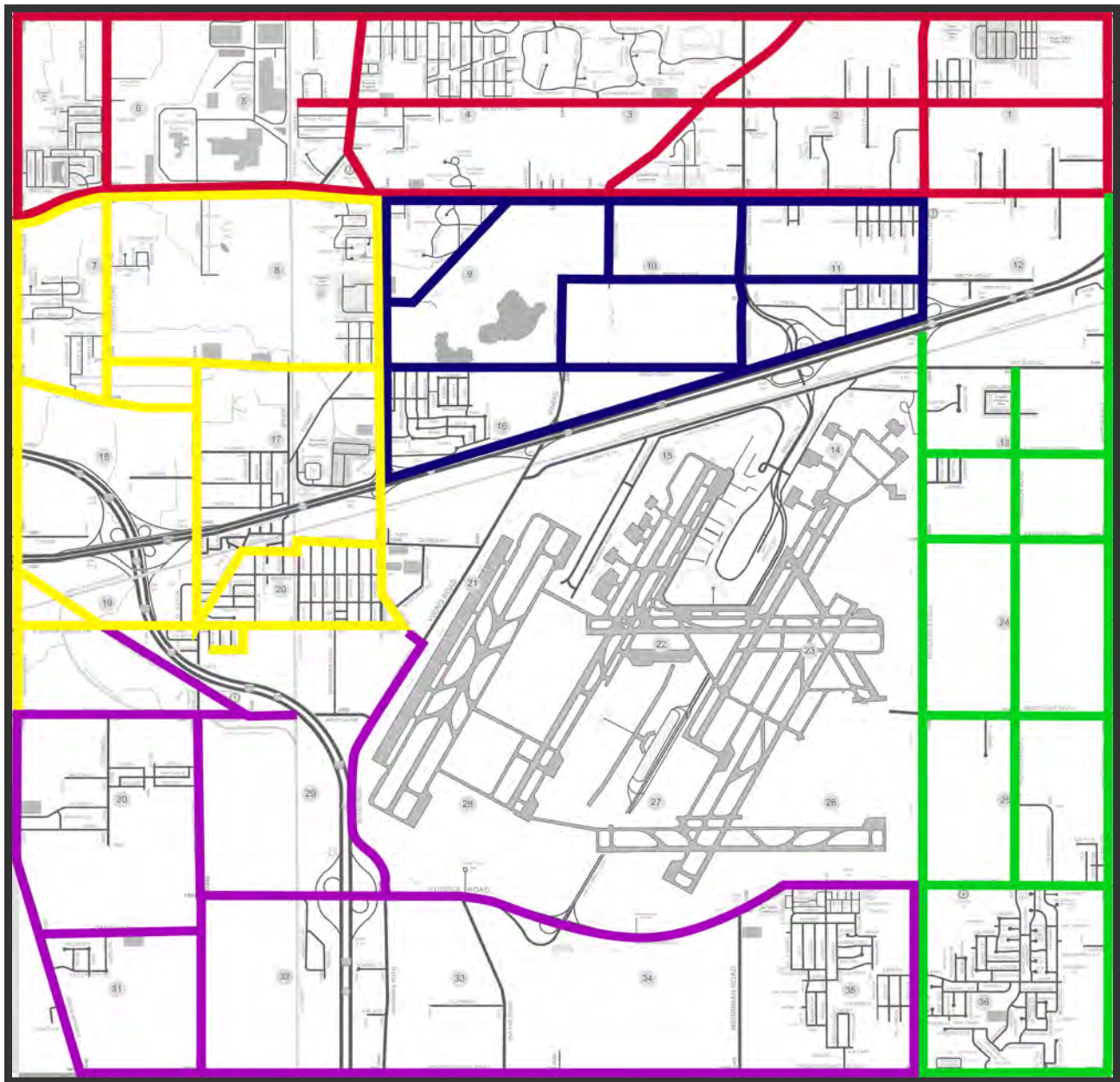
Unacceptable Trash Reminder

If any items placed at the curb do not meet the guidelines of the City's Solid Waste Program, they will not be collected. A large tag will be placed on the item, clearly indicating why it was not accepted.

To avoid missed pickups, please review the program guidelines and ensure all materials meet the requirements before placing them at the curb.

Recycling Collection

- Each household should continue to utilize its existing 64-gallon cart with yellow lid for recycling collection.
- For safety and efficiency, all recycling must be placed in your WM-provided cart. Bags or other bins placed outside the cart will not be collected.
- Place recyclables directly into the cart—do not bag your recyclables. Keep single plastic bags out of your cart, and please break down cardboard before placing inside.
- Residents aged 65+ may request a smaller 36-gallon cart at any time.
- Residents may upgrade to a 96-gallon cart for an exchange fee of \$25.00 at any time.



Monday **Tuesday** **Wednesday** **Thursday** **Friday**

Great things happen when residents **Recycle Right®**. By recycling everyday items like those shown below, tons of raw materials, time, energy and money are saved. To learn more visit wm.com/recycleright.

- Empty recyclables loose into your cart - don't bag recyclables and no loose plastic bags. Instead, reuse or return plastic bags to local retailers.
- Containers should be empty and free from food and liquid.



Always Recycle



Plastic Bottles & Containers 



Glass Bottles & Containers 



Food & Beverage Cans 



Paper 



Flattened Cardboard & Paperboard 



Do Not Include In Your Recycling Container



NO Food or Liquids 



NO Foam Cups & Containers 



NO Green Waste 



NO Batteries
Check local drop-off programs
for proper disposal 



NO Loose Plastic Bags,
Bagged Recyclables or Film
Empty recyclables directly into
your bin. 



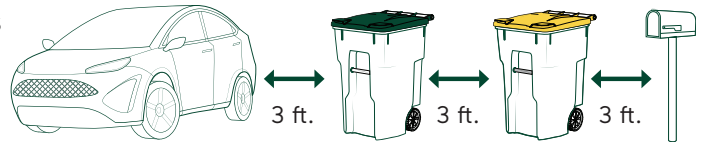
NO Clothing, Furniture & Carpet 

Service Guidelines

To ensure timely collection, please place your carts, bags and/or personal cans at the curb by 6:00 a.m. on your scheduled collection day or no earlier than 4:00 p.m. the evening before. Collection times may vary due to traffic, weather, road conditions, or volume.

Place your cart at least 3 feet away from any obstacles to allow the automatic arm to lift and empty the cart.

Place the wheels of the cart toward your house.



Seasonal Yard Waste

Michigan law requires yard waste be kept out of landfills, which means it must be placed separately from your regular household trash at the curb and taken to a designated yard waste recycling site. Thank you for doing your part to keep our community and environment clean!

- Yard waste collection begins the third week of March and concludes the Friday of the second week in December.
- Acceptable yard waste includes grass, weeds, leaves, shrub clippings, tree trimmings, garden waste material, dirt incidental to minor plantings, and bundles of brush or branches.
- Bundles may be up to 18 inches in circumference and four feet in length, weigh no more than 50 pounds and must be secured with string. Branches within the bundle cannot exceed six inches in diameter.
- You may use designated paper yard waste bags or personal cans up to 32 gallons that are clearly marked 'Yard Waste'.
- Each bag or can must weigh no more than 50 pounds.
- Set yard waste at least 3 feet away from your trash cart, or place it on the opposite side of your driveway.

Unacceptable Yard Waste:

- | | |
|---|-----------------------------|
| • branches larger than six inches in diameter | • shrubs |
| • dirt | • sod |
| • gravel | • stumps |
| • landscaping material | • trash |
| • pet waste | • uncut tree trunks or logs |
| • rocks and stones | • wood |
| • sand | |

Holiday Trees

Holiday trees may be placed at the curb for collection starting December 26 through the Friday collection of the second full week of January.

Bulk Item Collection

Place large items—such as appliances, furniture, mattresses, and carpet—at the curb on your regular collection day. **Each residence is limited to three bulk items per week.**

Please cut and roll carpet into sections four feet or less in length and weighing no more than 50 pounds. Sections must be tied with string or taped. Four bundles equals one bulk item.

Mattresses, box springs and upholstered furniture must be wrapped in plastic for safe collection.

Appliances containing Freon such as refrigerators and air conditioners must be properly drained and tagged prior to collection. Residents may also schedule collection of undrained items for an additional fee.

Unacceptable Items

- Automotive parts
- Batteries
- Construction or demolition material
- Fencing or railroad ties
- Oil and gas
- Propane tanks
- Roofing shingles
- Tires

For further details about Bulk Item Collection, please visit the Helpful Resources section on your community website.

Residential Landfill Vouchers (No Commercial Waste)

Need to dispose of extra items? Residents can purchase a landfill voucher from the Treasurer's Office at City Hall (11111 Wayne Road). Each voucher covers one pickup truck load (up to 2 cubic yards). Vouchers cannot be used to dispose of commercial waste.

- **Where to take your items:** Woodland Meadows Landfill located at 5900 Hannan Road in Van Buren Township.
- **What to bring:** Present your voucher and proof of Romulus residency to the gate attendant.
- **Landfill hours:** Monday–Friday: 6:00 a.m. – 4:30 p.m.
Saturday: 7:00 a.m. – 11:00 a.m.

Questions? Call the Treasurer's Office at (734) 942-7580 for more information.

Items Not Accepted at the Landfill

- Anti-Freeze
- Appliances containing freon
- Batteries
- Brush
- Concrete
- Dirt
- Explosives
- Flammables
- Hazardous waste
- Herbicides
- Large car parts
- Lawn mowers
- Liquid waste
- Medical waste
- Oil
- Paint solvents
- Paints
- Pesticides
- Poisons
- Sod
- Stumps
- Tires
- Tree limbs

Sharps & Needles

For everyone's safety, never place loose needles in your trash or recycling cart—doing so poses a serious risk to our collection team.

To help you dispose of sharps safely and responsibly, WM offers SafeDrop™, a convenient mail-back program for small quantities of needles. It's a simple, secure solution you can manage from home. Learn more at wm.com.

The Bagster® Bag

The Convenient Cleanup Solution for Home Projects



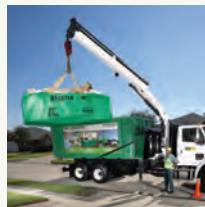
Buy.

Pick one up at home improvement stores or order online. The Bagster® bag comes in a compact package that's easy to store until you're ready to use it.



Fill.

Don't let the size fool you—this small but mighty bag holds up to 3,300 pounds of debris or waste.



Gone.

When you're done, schedule a pickup online or call 877-789-BAGS (2247), and we'll handle the rest—quickly and hassle-free.

Big cleanups made easy — right from your driveway.

Learn more at wm.com/bagster

Connect with WM

Visit Your Community Website

We're excited to have you visit your dedicated community website at home.wm.com/romulus. This is your go-to spot for everything about waste and recycling in your area. You'll find helpful guidelines, pickup schedules for regular and holiday collections, and easy ways to submit service requests or get in touch with us. Tip: Bookmark the page for quick access anytime!

Let's Chat!

Visit us at wm.com/support to chat with our virtual assistant or connect with one of our customer service representatives.

Customer Experience: (866) 797-9018

