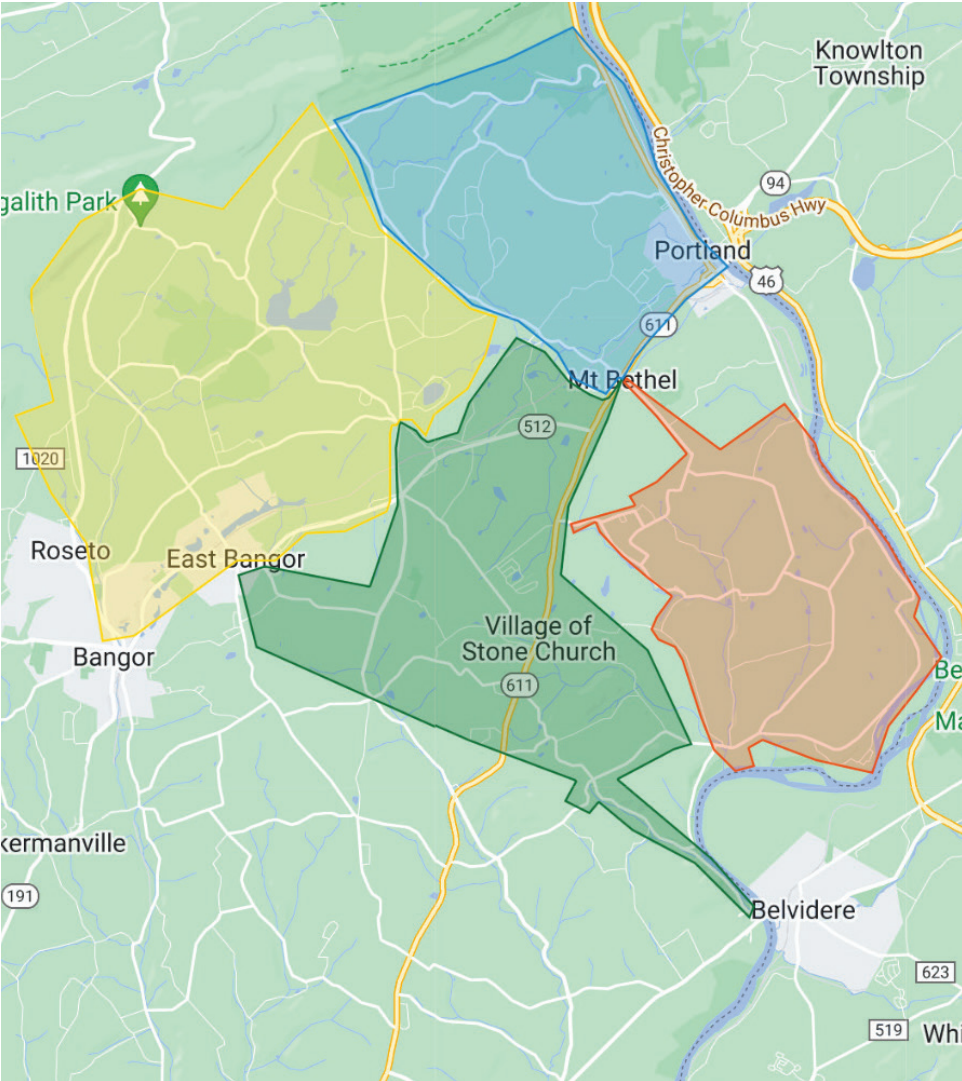


2025 Trash and Recycling Collection Map



Your Current Collection Day has not changed. Please look at your mailing address on this brochure to know what is your current collection day.

- Monday
- Tuesday
- Wednesday
- Thursday

WM
910 W. Pennsylvania Avenue
Pen Argyl, PA 18072

Upper Mount Bethel Township

2025 Automated Waste and Recycling
Collection Services



Dear Upper Mount Bethel Township Resident,

WM is proud to provide residents with automated collection of their waste and recyclables. Using the cart-based system reduces litter and helps to keep your community clean.

Please keep this information handy for future reference. Review the map and calendar to know your collection schedule. Or look at your mailing address on this guide to see what day of the week you will be serviced.

Waste Collection - Weekly

- Use your 96-gallon black cart with a black lid for weekly waste collection.
- Place your cart at the curb the night before or before 5 a.m. on your service day. Carts must be placed with the handle facing away from the road and at least 3 feet away from other carts, mailboxes, cars, poles or trees.
- Please bag all your trash before putting it in the cart to help reduce litter and to keep your cart clean.
- All trash must fit within the cart with the lid closed. Please do not overload or place extra trash outside the cart.

Recycling Collection: Every Other Week

- Use your 96-gallon black cart with a yellow lid for single-stream recycling collection.
- Recycling is collected every other week on the same day as your waste collection. See calendar.
- Place your cart at the curb the night before or before 5 a.m. on your service day. Carts must be placed with the handle facing away from the road and at least 3 feet away from other carts, mailboxes, cars, poles or trees.
- Please flatten all boxes or cut them down to fit in the cart. Do not pile cardboard beside the cart.
- DO NOT bag your recycling before putting it into the cart. Place all recycled items loosely into the cart. NO plastic bags of any kind may be placed in the cart. Please see the graphic on how to Recycle Right.

Bulk Item Collection: (Every Friday)

Residents are permitted to dispose of one (1) bulk item weekly on Friday.

Bulk item examples include furniture, mattress, box spring, microwave, etc. Mattresses and box springs must be plastic wrapped for pickup. Carpet rolls (4 rolls = 1 bulk item) are acceptable when:

- Cut into 4 ft width, rolled and bound, less than 50 lbs. each.
- Major appliances are acceptable for pickup, including; washer, dryer, stove, dishwasher, hot water heater, etc. Refrigerators, freezers, air conditioners and dehumidifiers must be Freon free. Any of these units must have FREON removed by a certified technician, and the unit stickered in a visible location.
- We cannot accept demolition debris.



To learn more, visit wm.com/recycleright



Great things happen when residents Recycle Right®. By recycling everyday items like those shown below, tons of raw materials, time, energy and money are saved.

- Empty recyclables loose into your cart - don't bag recyclables and no loose plastic bags. Instead, reuse or return plastic bags to local retailers.
- Containers should be empty and free from food and liquid.



Always Recycle



Plastic Bottles & Containers



Glass Bottles & Containers



Food & Beverage Cans



Paper



Flattened Cardboard & Paperboard



Do Not Include In Your Recycling Container



NO Food or Liquids



NO Foam Cups & Containers



NO Green Waste



NO Batteries
Check local drop-off programs for proper disposal



NO Loose Plastic Bags, Bagged Recyclables or Film
Empty recyclables directly into your bin.



NO Clothing, Furniture & Carpet

2025 Trash and Recycling Collection Schedule

Monday Trash Only

Monday Trash and Recycling

Tuesday Trash Only

Tuesday Trash and Recycling

Bulk Collection

Wednesday Trash Only

Wednesday Trash and Recycling

Thursday Trash Only

Thursday Trash and Recycling

Observed Holidays

January 2025						
S	M	T	W	T	F	S
5	6	7	8	9	10	11
12	13	14	15	16	17	18
19	20	21	22	23	24	25
26	27	28	29	30	31	

April 2025						
S	M	T	W	T	F	S
6	7	8	9	10	11	12
13	14	15	16	17	18	19
20	21	22	23	24	25	26
27	28	29	30			

July 2025						
S	M	T	W	T	F	S
6	7	8	9	10	11	12
13	14	15	16	17	18	19
20	21	22	23	24	25	26
27	28	29	30	31		

October 2025						
S	M	T	W	T	F	S
5	6	7	8	9	10	11
12	13	14	15	16	17	18
19	20	21	22	23	24	25
26	27	28	29	30	31	

February 2025						
S	M	T	W	T	F	S
2	3	4	5	6	7	8
9	10	11	12	13	14	15
16	17	18	19	20	21	22
23	24	25	26	27	28	

May 2025						
S	M	T	W	T	F	S
4	5	6	7	8	9	10
11	12	13	14	15	16	17
18	19	20	21	22	23	24
25	26	27	28	29	30	31

August 2025						
S	M	T	W	T	F	S
3	4	5	6	7	8	9
10	11	12	13	14	15	16
17	18	19	20	21	22	23
24	25	26	27	28	29	30
31						

November 2025						
S	M	T	W	T	F	S
2	3	4	5	6	7	8
9	10	11	12	13	14	15
16	17	18	19	20	21	22
23	24	25	26	27	28	29
30						

March 2025						
S	M	T	W	T	F	S
2	3	4	5	6	7	8
9	10	11	12	13	14	15
16	17	18	19	20	21	22
23	24	25	26	27	28	29
30	31					

June 2025						
S	M	T	W	T	F	S
1	2	3	4	5	6	7
8	9	10	11	12	13	14
15	16	17	18	19	20	21
22	23	24	25	26	27	28
29	30					

September 2025						
S	M	T	W	T	F	S
7	8	9	10	11	12	13
14	15	16	17	18	19	20
21	22	23	24	25	26	27
28	29	30				

December 2025						
S	M	T	W	T	F	S
7	8	9	10	11	12	13
14	15	16	17	18	19	20
21	22	23	24	25	26	27
28	29	30	31			

Observed Holidays

Please note, if your service day falls on or follows one of these observed holidays, your service will be delayed by one day for that week only.

New Year's Day: Wednesday January 1, 2025

Memorial Day: Monday May 26, 2025

Independence Day: Friday July 4, 2025

Labor Day: Monday September 1, 2025

Thanksgiving Day: Thursday November 27, 2025

Christmas Day: Thursday December 25, 2025

Household Hazardous Wastes and Electronics/E-Waste are not accepted as waste.

Toxic chemicals, pesticides, oil-based paints, automotive or rechargeable batteries, fuels and fluids must be disposed of properly. Also, PA state law does not allow WM to collect ANY of the following TVs, cell phones, computers, printers, monitors or electronic devices. Please see the Northampton County website for proper handling and disposal options.

For more information:

WM Community Page
Upper Mt. Bethel Township
Northampton County

home.wm.com/upper-mount-bethel
(570) 897-6127 | www.umbt.org
www.northamptoncounty.org

Missed Pickup?

Go to home.wm.com/upper-mount-bethel or call (800) 869-5566