



IRVINE • SPRING 2016

# RECYCLING NEWS

Brought to you by Waste Management, Irvine's residential waste service provider.



IRVINE:

## REACHING FOR THE 75% GOAL



California has one of the highest recycling rates in the country, but there is more we can do to reach the state's goal of 75% recycling by 2020. The 75% goal represents California's next step in sustainability, investing in recycling infrastructure, phasing organics out of the landfill, establishing producer responsibility for packaging waste, and expanding the beverage container-recycling program.

It has also paved the way for recent recycling legislation, such as Assembly Bill 1826 - California's Mandatory Commercial Organics Recycling Law - which targets the recycling of food waste and landscape materials. To learn more visit: <http://www.calrecycle.ca.gov/75percent/>

For those businesses interested in recycling organics, contact Waste Management Customer Service at (949) 642-1191.

## STATE LAWS DRIVE INCREASED RECYCLING

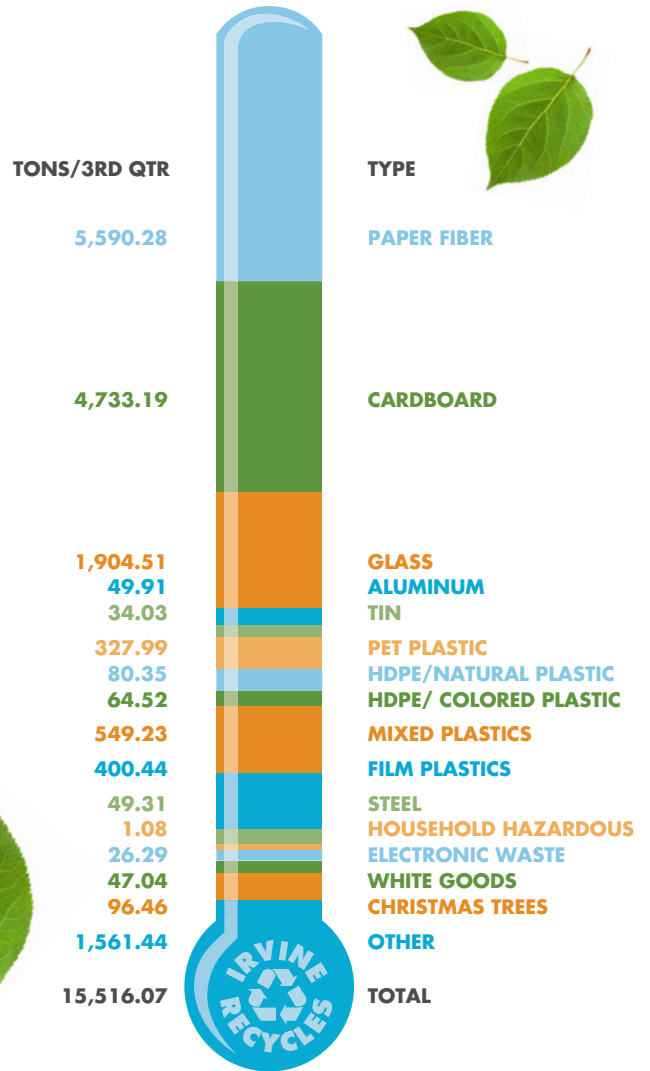
### COMMERCIAL ORGANICS RECYCLING PROGRAM

California's Mandatory Commercial Organics Recycling Law (AB 1826) requires businesses and multifamily complexes to start recycling their organic waste before April 1, 2016 if they generate eight cubic yards or more of solid waste per week. Many Irvine businesses already recycle organics, including food scraps, vegetable trimmings, and landscape materials.

Once food scraps are collected, they are processed and transported to a wastewater treatment facility, where they are transformed into "green" renewable energy. Landscape materials are also recycled and are sent to a local composting facility.

## 2015 RESIDENTIAL RECYCLING

### TONS COLLECTED



## REDUCE YOUR BILL

### DOWNSIZE YOUR TRASH CART

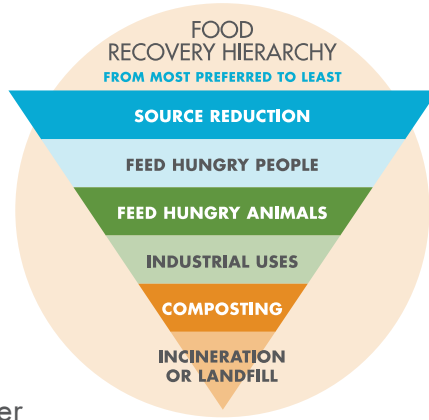
Customers can request residential carts in three sizes: 35-gallon, 64-gallon, or 96-gallon sizes. To reduce your trash bill, switch to the smallest 35-gallon trash cart and become a low waste generator. By subscribing to a smaller cart, you can help California reach its goal of 75% waste diversion by 2020. For additional information, contact the WM Customer Service Center at (949) 642-1191.

## DID YOU KNOW?

### FOOD WASTE RECYCLING IS HAPPENING IN IRVINE!

Kudos to those restaurants at the following shopping centers already participating in the Irvine food waste recycling program:

- Diamond Jamboree
- Irvine Marketplace
- Irvine Spectrum
- University Center
- Northwood Town Center
- Walnut Village Center
- Westpark Plaza Shopping Center
- Woodbridge Village Center



Let the restaurants you patronize know you'd like them to implement food waste recycling today!

## FOOD TOO GOOD TO WASTE

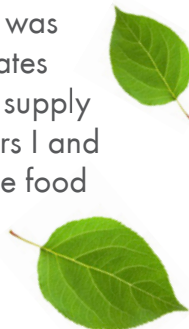
### REDUCE WASTED FOOD AT HOME



Whether it's moldy cheese, limp celery, or leftovers, chances are you've wasted food this week. Currently, Americans waste about 25% of all food purchases. Most people don't realize how much food they throw away every day, from uneaten leftovers to spoiled produce. About 95 percent of the food we throw away ends up in landfills or is burned for energy.

In 2013, more than 35 million tons of food waste was disposed of in the United States. The USDA estimates that almost 30 percent of the available U.S. food supply went to waste in 2010. As far back as World Wars I and II, the USDA has encouraged consumers to reduce food waste. Now you can help take steps to reduce food waste. Reducing wasted food at home is important in reducing our overall waste stream.

To learn about the U.S. Environmental Protection Agency guidelines on how to reduce food waste, go to: [endfoodwaste.org/food-too-good-to-waste-by-the-epa](http://endfoodwaste.org/food-too-good-to-waste-by-the-epa)



## FREE USED OIL FILTER EXCHANGE

IN IRVINE April 23, 2016 • 8 a.m. to 1 p.m.

Bring us your used oil filter to be recycled and get a replacement filter free of charge. Please drain oil filter 24 hours in advance. One filter exchanged per person.



**O'REILLY AUTO PARTS**  
15315 Culver Drive, Suite 170, Irvine

## HOUSEHOLD HAZARDOUS WASTE

What is Household Hazardous Waste (HHW)? It is any type of spent household product that requires special handling. In California, it is illegal to dispose of these products in your designated waste cart or take it to the landfill. You can drop off your HHW at 6411 Oak Canyon, Irvine, CA 92618; or for more information, go to: [cityofirvine.us/programs/recycling/](http://cityofirvine.us/programs/recycling/) or visit the County of Orange HHW drop off location.

## FREE BULKY ITEM PICK UP

WM offers a FREE Bulky Item Pick Up to help Irvine residents dispose of large items and those that will not fit into your trash cart. Irvine residents in single-family homes and multifamily units with garages may set out up to four (4) large items for collection. Pick up services are offered two (2) times per year at no charge.

Bulky waste includes furniture, appliances, universal waste (i.e., batteries, fluorescent tubes and bulbs) and electronics (i.e., televisions, video recorders, and other electronics). We do not accept construction and demolition waste, or automotive body parts.

To schedule a pick-up, contact Waste Management at (949) 642-1191 at least 48 hours in advance of your trash collection day.