



# Simi Valley Landfill and Recycling Center



## A Long-Term Solution for Ventura County's Needs

### Committing to the community

For more than 30 years, the Simi Valley Landfill and Recycling Center (SVLRC) has served the disposal and recycling needs of residents in Ventura County, south Santa Barbara County and west San Fernando Valley. SVLRC is committed to keeping our local communities clean, recovering reusable resources from the waste stream and preserving landfill space for local waste.

### Expansion at a glance:

- Create open space and wildlife habitat around landfill of 516 acres
- Increase landfill footprint to 371 acres
- Expand recycling capabilities with construction of Material Recovery Facility (MRF), Recyclables Transfer Facility (RTF) and Environmental Collection Center (ECC)
- Expand green energy program
- Install LNG (Liquefied Natural Gas) fueling station
- Move G.I. Rubbish operations to the landfill site
- No increase in permitted total daily tonnage (fixed at 9,250 TPD)

### Increasing landfill life eliminates the need to build more landfills

As Ventura County has developed, so has the need for local landfill space. Under current conditions, both of Ventura County's active landfills will reach capacity around 2027. In order to meet the area's future needs, SVLRC is proposing to modify its Conditional Use Permit (CUP) to expand the landfill and make a number of improvements to meet the County's disposal and recycling needs past the year 2050.

### Improving facilities will contribute to a greener community

Improvements will include expanding the current green energy programs, and building a modern recycling plant, known as a Material Recovery Facility. The plans also include additional generators to the existing landfill's gas-to-energy program. This will create enough energy to generate power for 6,250 homes. A new liquefied natural gas (LNG) facility on-site will also allow us to use this landfill gas to fuel our clean-burning LNG trucks.

*The Simi Valley Landfill and Recycling Center is committed to meeting the needs of Ventura County and our local customers. With our expansion, we can enhance our commitment to offer residents the best possible recycling and disposal services into the future.*



### Enhancing recycling on-site

In addition to building a modern MRF, we intend to add an Environmental Collection Center so things such as household hazardous waste (HHW) and consumer electronics (e-waste) can be kept out of the landfill. Licensed, certified handlers will transport HHW and e-waste to appropriate, permitted facilities. Regular recyclables will be transported to specialized off-site processors.



### Holding daily tonnage limits steady

Today, SVLRC is permitted to accept a total of 9,250 tons per day (TPD): 3,000 TPD of trash for landfill disposal and 6,250 TPD of recyclables. We are not proposing to change the total of 9,250 TPD. A careful review of market conditions and growth projections for Ventura County have led us to conclude that our plans should include a redistribution of the materials that we receive. Therefore, we are proposing to receive up to 6,000 TPD of trash for disposal, while maintaining the total incoming volume at 9,250 TPD.

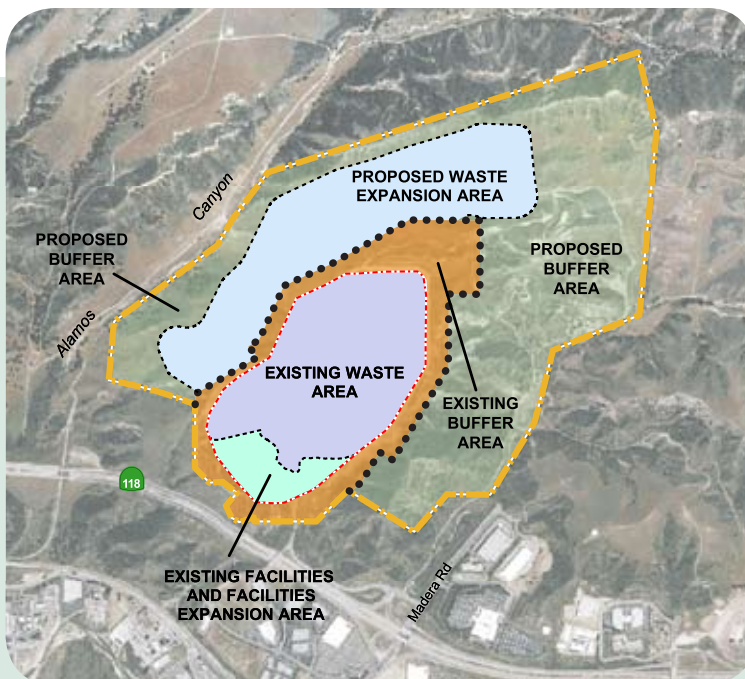


### Establishing over 500 acres as a buffer

SVLRC is working to conserve and protect 516 acres of open land. Habitat enhancement at the Simi Valley Landfill and Recycling Center already includes:

- Restoring Venturan coastal sage scrub habitat
- Controlling invasive vegetation
- Managing for the coastal California gnatcatcher
- Designing stormwater basins for wildlife
- Creating “pollinator” gardens for butterflies and hummingbirds

*For more information on the Simi Valley Landfill and Recycling Center or any of its programs, please visit [www.KeepingVenturaCountyClean.com](http://www.KeepingVenturaCountyClean.com) or call us at (805) 579-7267.*



### Legend

- Existing Site Property Boundary
- Proposed Site Property Boundary
- Permitted Waste Boundary
- Existing Waste Area
- Existing Facilities and Facilities Expansion Area
- Proposed Waste Expansion Area
- Proposed Buffer Area
- Existing Buffer Area



0 500 1,000 1,500 2,000 Feet

CA State Plane, Zone 5, NAD27

02/22/06

**Simi Valley Landfill and Recycling Center Expansion - Existing and Proposed Land Usage**