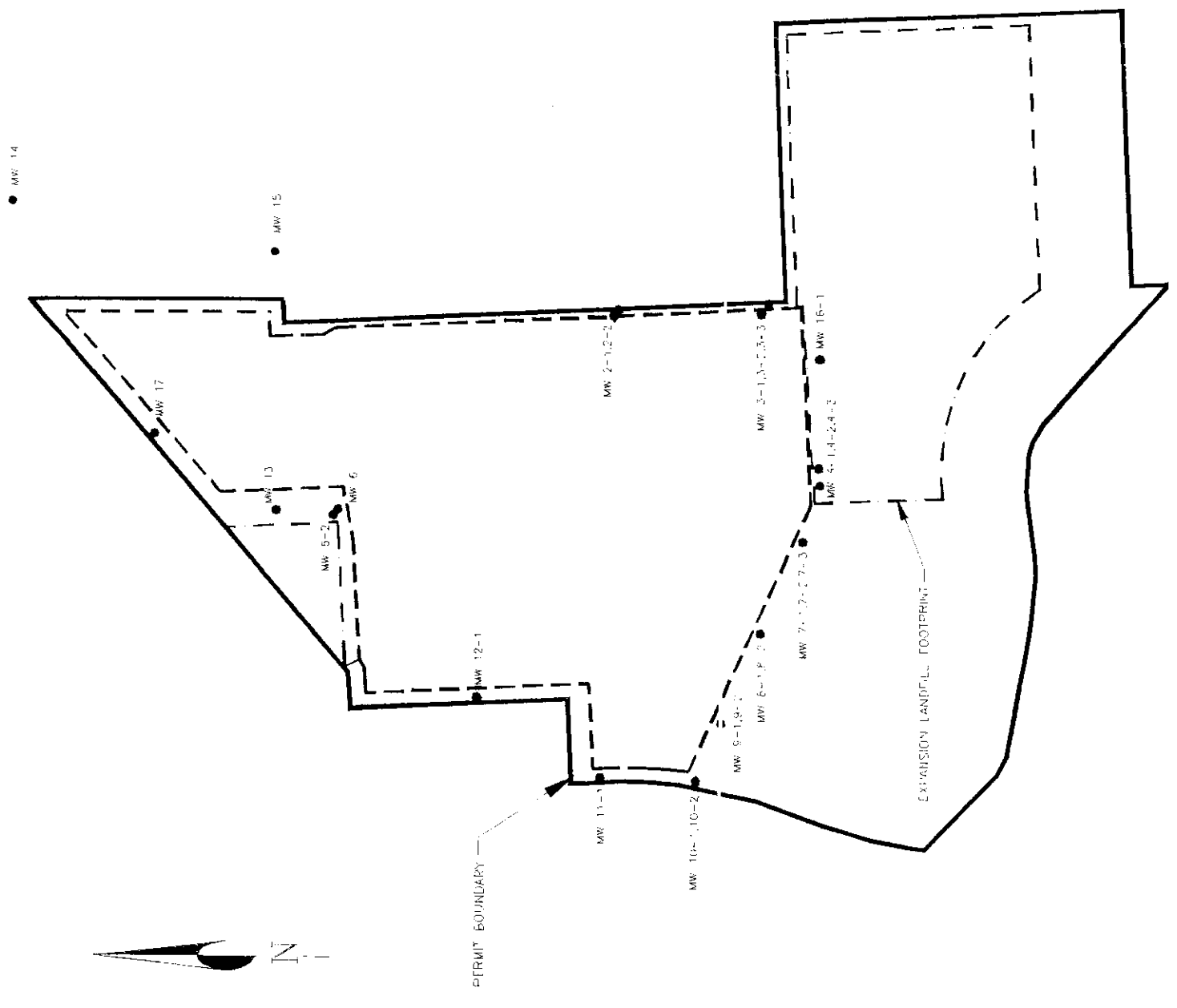
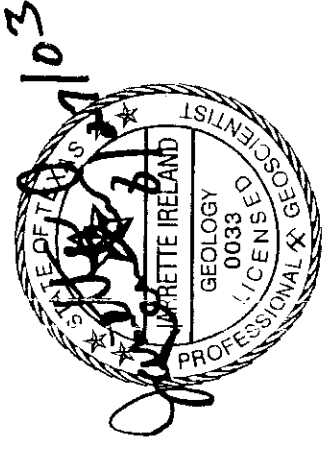
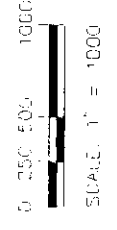


Sample Point	Unit	Date	Water Elevation	Units
MW-02-1	I	10/17/2002	56	ft/msl
MW-03-1	I	10/17/2002	57.26	ft/msl
MW-04-1	I	10/17/2002	53.72	ft/msl
MW-07-1	I	10/17/2002	44.52	ft/msl
MW-08-1	I	10/17/2002	41.8	ft/msl
MW-09-1	I	10/17/2002	45.74	ft/msl
MW-16-1	I	10/17/2002	55.31	ft/msl
MW17-1	I	10/17/2002	61.45	ft/msl
MW-02-2	II	10/17/2002	45.19	ft/msl
MW-04-2	II	10/17/2002	34.1	ft/msl
MW-07-2	II	10/17/2002	40.48	ft/msl
MW-03-3	IV	10/17/2002	2.44	ft/msl
MW-04-3	IV	10/17/2002	0.12	ft/msl
MW-07-3	IV	10/17/2002	-1.97	ft/msl
MW-08-2	IV	10/17/2002	-2.25	ft/msl
MW-09-2	IV	10/17/2002	-5.14	ft/msl
MW-10-2	IV	10/17/2002	-5.29	ft/msl
MW-11-1	IV	10/17/2002	-2.41	ft/msl
MW-12-1	IV	10/17/2002	0.16	ft/msl
MW-14-1	IV	10/17/2002	4.4	ft/msl

OCTOBER 2002 WATER LEVELS



PERMIT AMENDMENT
ATASCOCITA RECYCLING AND
DISPOSAL FACILITY

TCEQ MSW 1507-C
HARRIS COUNTY, TEXAS



**Tolunay-Wong
Engineers, Inc.**
Houston, Texas

CURRENT MONITORING
WELL LOCATIONS

SCALE	NOTED
DATE	APPROVED BY
GEOLOGIST	PROJECT NUMBER