

**SKYLINE LANDFILL**  
**APPENDIX IA**  
**GENERAL LOCATION MAPS**

## CONTENTS

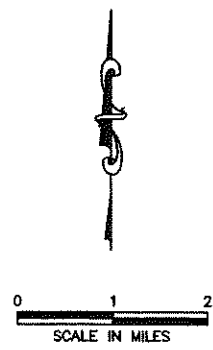
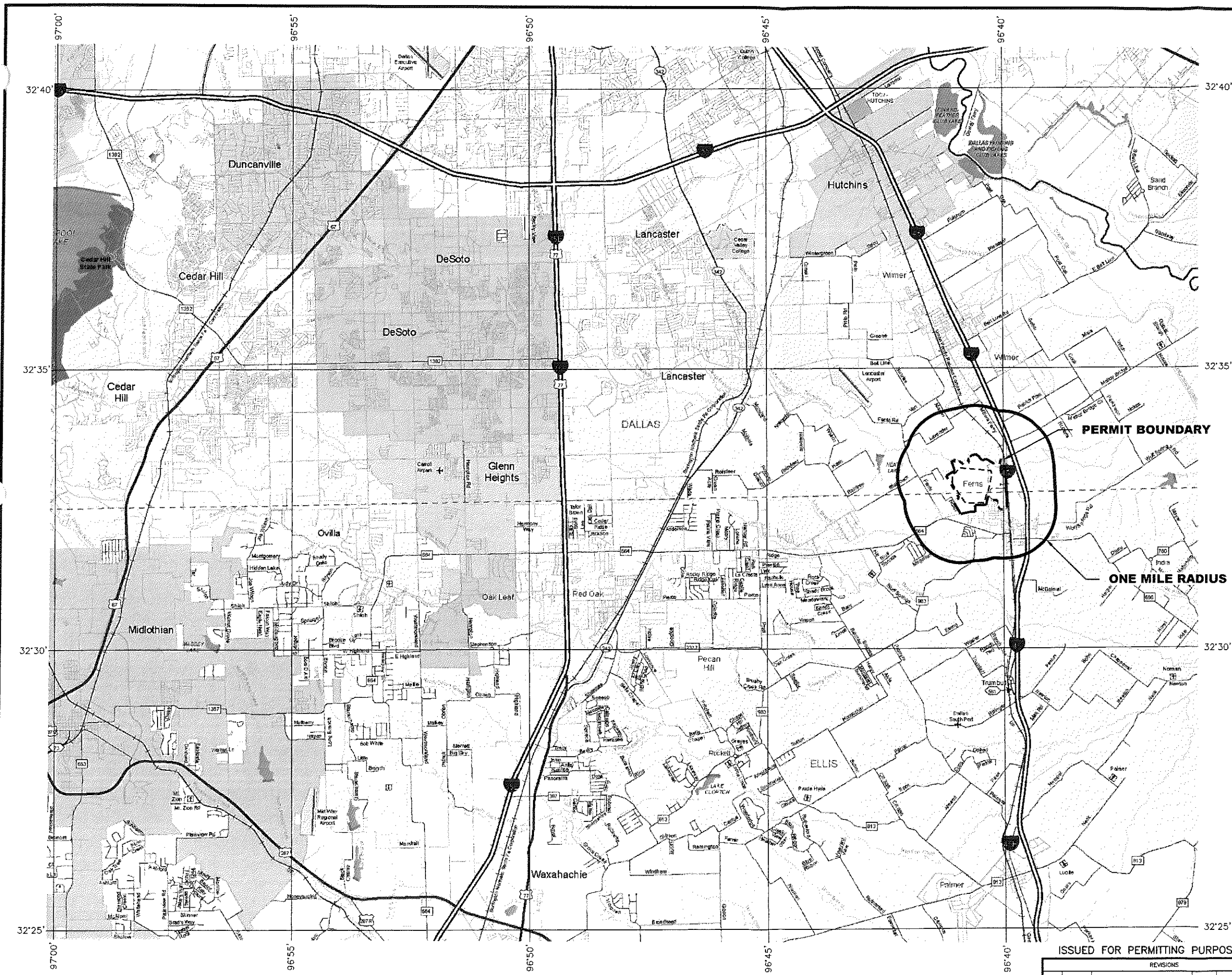
---

- IA.1 General Highway Map – Dallas and Ellis Counties
- IA.2 Detailed Highway Map – Dallas and Ellis Counties
- IA.3 General Topographic Map
- IA.4 Water Well/Wells, Springs and Water Bodies Location Map
- IA.5 Aerial Photograph
- IA.6 Site Plan
- IA.7 General Site Plan
- IA.8 Entrance Road and Entrance Facilities Plan
- IA.9 Buffer Zone Plan



8/21/2012

J:\101\01\120\Part 1\A.1-GenHwyMap.dwg Layout: Layout1 User: scundiff



- LEGEND**
- PERMIT BOUNDARY
  - - - LANDFILL FOOTPRINT
  - ONE MILE RADIUS
  - IH, BI
  - US, BU, UA, UP
  - SH, BS
  - SL, SS, PR
  - 1889 FM, BF, RM, RR, RE, RS, PA
  - County Road
  - City Street or other Non-County Maintained Road
  - Railroad
  - Incorporated City
  - Unincorporated Community
  - ✈ Airport
  - ✈ Airport Runway
  - School
  - Military Installation
  - Prison
  - National or State Park
  - National or State Forest
  - Other Public Land
  - ⊕ Cemetery
  - Dam
  - County Line
  - District Line
  - Canal
  - Flowing Stream
  - Intermittent Stream
  - River
  - Gulf Intracoastal Waterway
  - Other Body of Water

**NOTE:**  
 1. GENERAL HIGHWAY MAP DOWNLOADED FROM TxDOT WEBSITE AS PART OF THE COUNTY MAPBOOK 2010 ON JANUARY 31, 2012.



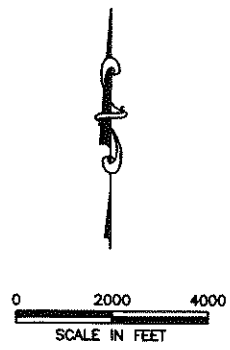
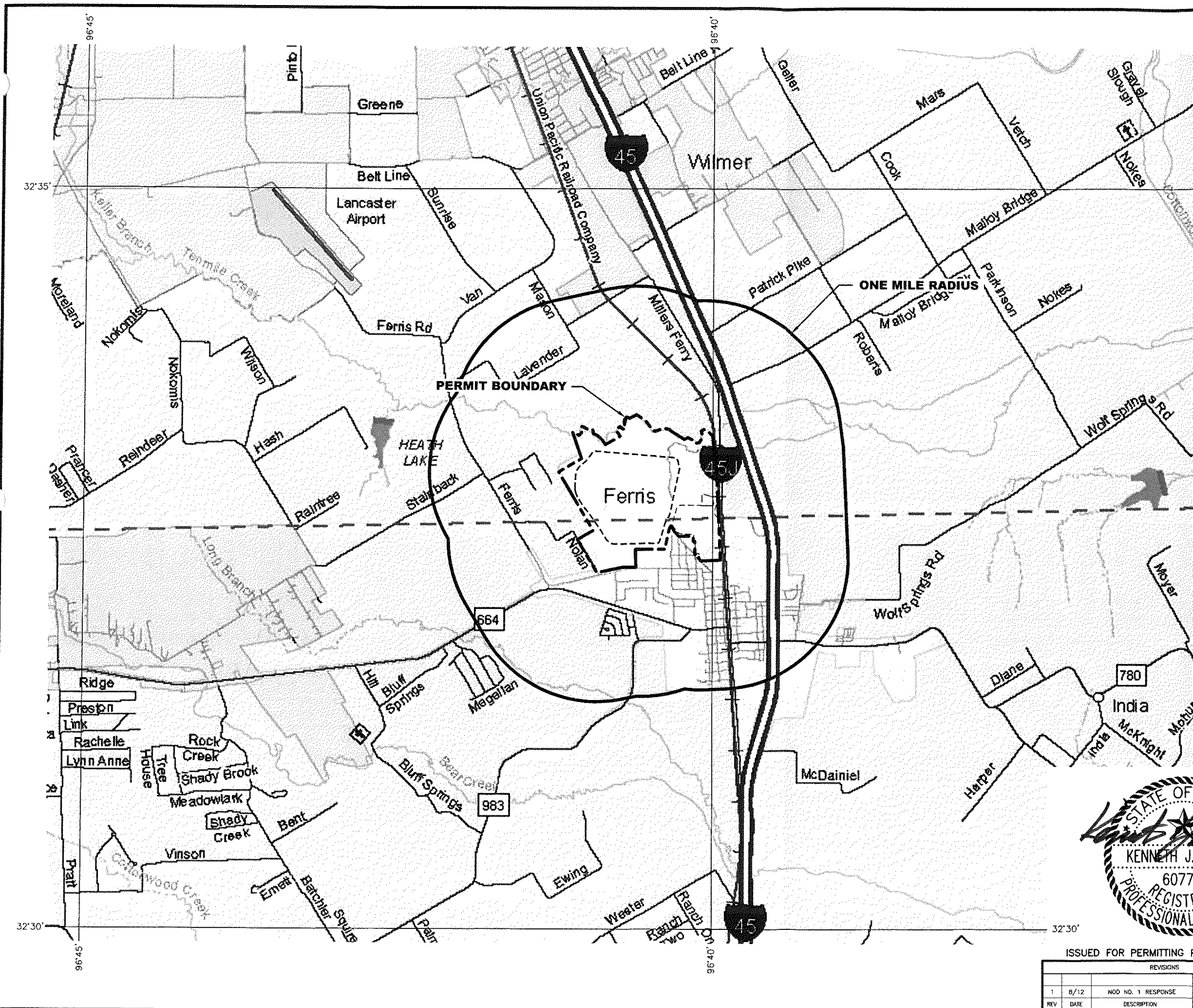
**GENERAL HIGHWAY MAP  
 DALLAS AND ELLIS COUNTY**  
**WASTE MANAGEMENT OF TEXAS, INC.  
 SKYLINE LANDFILL  
 MAJOR PERMIT AMENDMENT**

**BIGGS & MATHEWS  
 ENVIRONMENTAL  
 CONSULTING ENGINEERS**  
 MANSFIELD • WICHITA FALLS  
 817-563-1144

ISSUED FOR PERMITTING PURPOSES ONLY

REVISIONS							TBPE FIRM NO. F-256		TBPG FIRM NO. 50222	
1	8/12	NOD NO. 1 RESPONSE	SRC	KJW	KJW	KJW	DSN. SAB	DATE :	04/12	DRAWING
REV	DATE	DESCRIPTION	DWN	DES BY	CHK BY	APP BY	DWN. SRC	SCALE :	GRAPHIC	IA.1
							CHK. KJW	DWG :	IA.1-GenHwyMap.dwg	

J:\101\01\120\Part 1\A.2-DetailedHwyMap.dwg Layout: Layout1 User: scundiff



**Legend**

- IH, BI
- US, BU, UA, UP
- SH, BS
- SL, SS, PR
- FM BF, RM, RR, RE, RS, PA
- County Road
- City Street or other
- Non-County Maintained Road
- Railroad
- Incorporated City
- Unincorporated Community
- Airport
- Airport Runway
- School
- Military Installation
- Prison
- National or State Park
- National or State Forest
- Other Public Land
- Cemetery
- Dam
- County Line
- District Line
- Canal
- Flowing Stream
- Intermittent Stream
- River
- Gulf Intracoastal Waterway
- Other Body of Water

PERMIT BOUNDARY  
 LANDFILL FOOTPRINT  
 ONE MILE RADIUS

**NOTE:**  
 1. GENERAL HIGHWAY MAP DOWNLOADED FROM TxDOT WEBSITE AS PART OF THE COUNTY MAPBOOK 2010 ON JANUARY 31, 2012.



**DETAILED HIGHWAY MAP  
 DALLAS AND ELLIS COUNTY  
 WASTE MANAGEMENT OF TEXAS, INC.  
 SKYLINE LANDFILL  
 MAJOR PERMIT AMENDMENT**



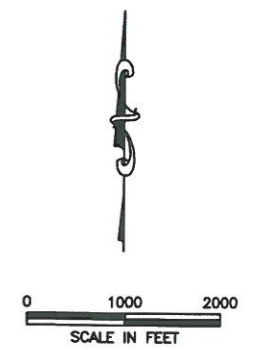
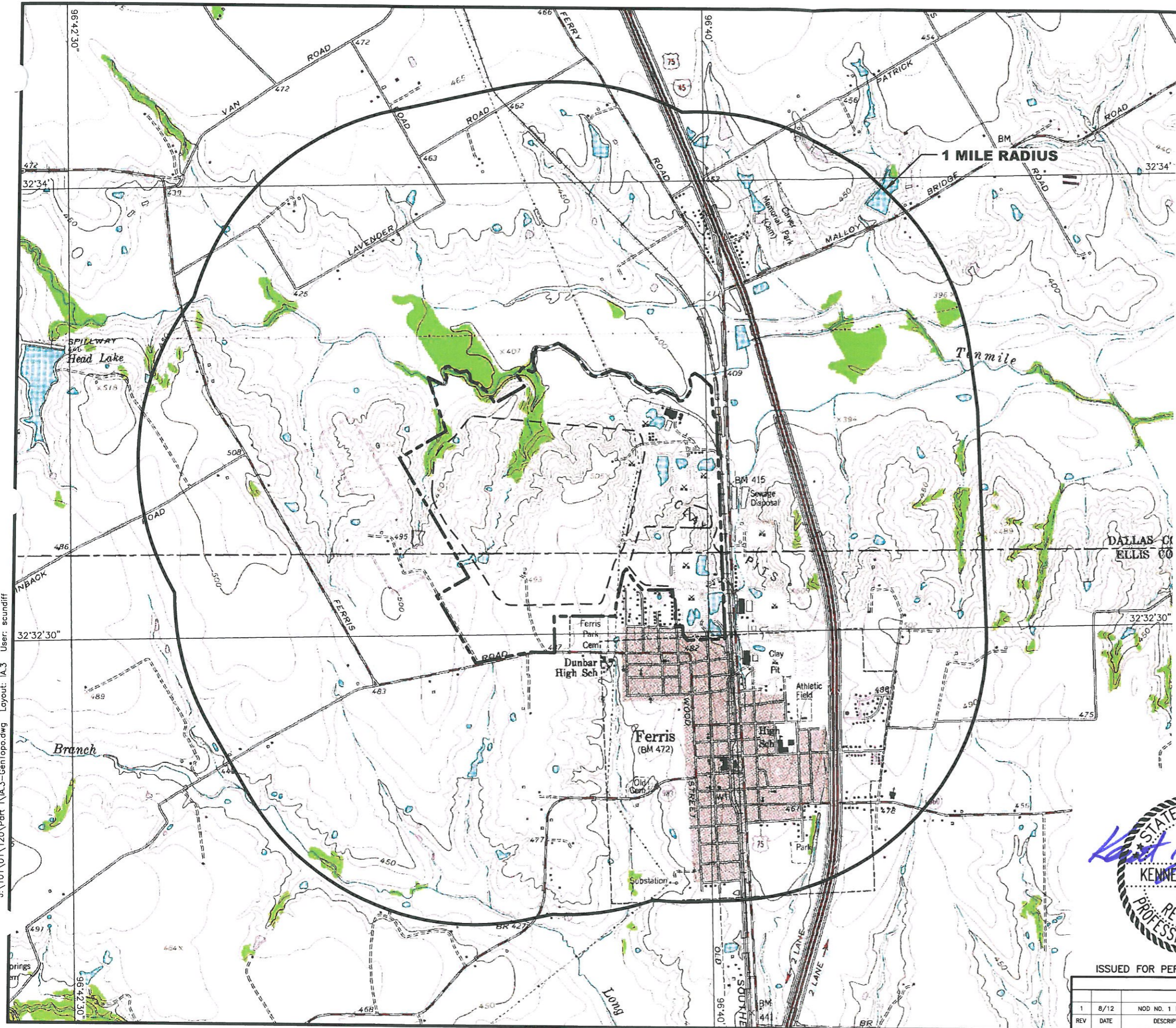
**BIGGS & MATHEWS  
 ENVIRONMENTAL  
 CONSULTING ENGINEERS**  
 MANSFIELD • WICHITA FALLS  
 817-563-1144

ISSUED FOR PERMITTING PURPOSES ONLY

REVISIONS		TBPE FIRM NO. F-256	TBPG FIRM NO. 50222
1	8/12	DSN. SAB	DATE : 04/12
REV	DATE	DESCRIPTION	SCALE : GRAPHIC
		CHK. KJW	DWG : IA.2-DetailedHwyMap.dwg

**IA.2**

J:\101\01\120\Part 1\A.3-GenTopo.dwg Layout: IA.3 User: scundiff



**LEGEND**

- PERMIT BOUNDARY
  - LANDFILL FOOTPRINT
  - ONE MILE RADIUS
  - EXISTING 10' GROUND CONTOUR
  - SURFACE WATER BODY OR OTHER WATER
- FERRIS, TEX.**  
 SW/4 SEAGOVILLE 15 QUADRANGLE  
 N3230-W9637.5/7.5
- 1959  
 PHOTO REVISSED 1988  
 AMS 6649 11 SW-SERIES V882
- ROAD CLASSIFICATION**
- Heavy-duty
  - Light-duty
  - Medium-duty
  - Unimproved dirt
  - Interstate Route
  - U.S. Route
  - State Route

**NOTES:**

1. TOPOGRAPHIC BASE MAP DOWNLOADED FROM USGS WEBSITE ON JANUARY 31, 2012.
2. REFER TO PART II, APPENDIX B-LAND USE ANALYSIS FOR DETAILED LAND USE INFORMATION AND LAND USE MAP. LAND USE ANALYSIS AND MAP HAS BEEN PREPARED BY JOHN WORRAL CONSULTING.
3. THERE ARE 889 RESIDENCES AND 90 INDUSTRIAL/COMMERCIAL ESTABLISHMENTS WITHIN ONE MILE OF THE PERMIT BOUNDARY.
4. THERE ARE 18 CHURCHES, 2 DAY CARE CENTERS, 4 CEMETERIES, AND 3 SCHOOLS WITHIN ONE MILE OF THE PERMIT BOUNDARY.
5. THERE ARE 2 TEXAS STATE HISTORICAL COMMISSION HISTORIC MARKERS WITHIN ONE MILE OF THE PERMIT BOUNDARY.
6. THERE ARE NO ARCHAEOLOGICAL SITES AND NO SITES HAVING EXCEPTIONAL AESTHETIC QUALITY WITHIN ONE MILE OF THE PERMIT BOUNDARY.
7. THERE ARE NO INTAKE/DISCHARGE STRUCTURES LOCATED WITHIN OR ASSOCIATED WITH THE FACILITY.
8. THERE ARE NO WASTE DISPOSAL ACTIVITIES WITHIN THE PERMIT BOUNDARY THAT ARE NOT INCLUDED IN THIS PERMIT AMENDMENT APPLICATION.
9. REFER TO DRAWING IA.5-AERIAL PHOTOGRAPH FOR GENERAL CHARACTER OF AREAS ADJACENT TO THE FACILITY.

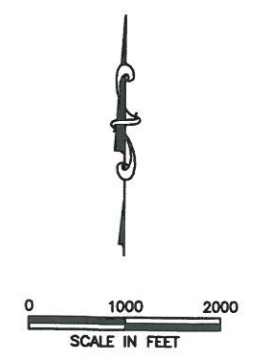
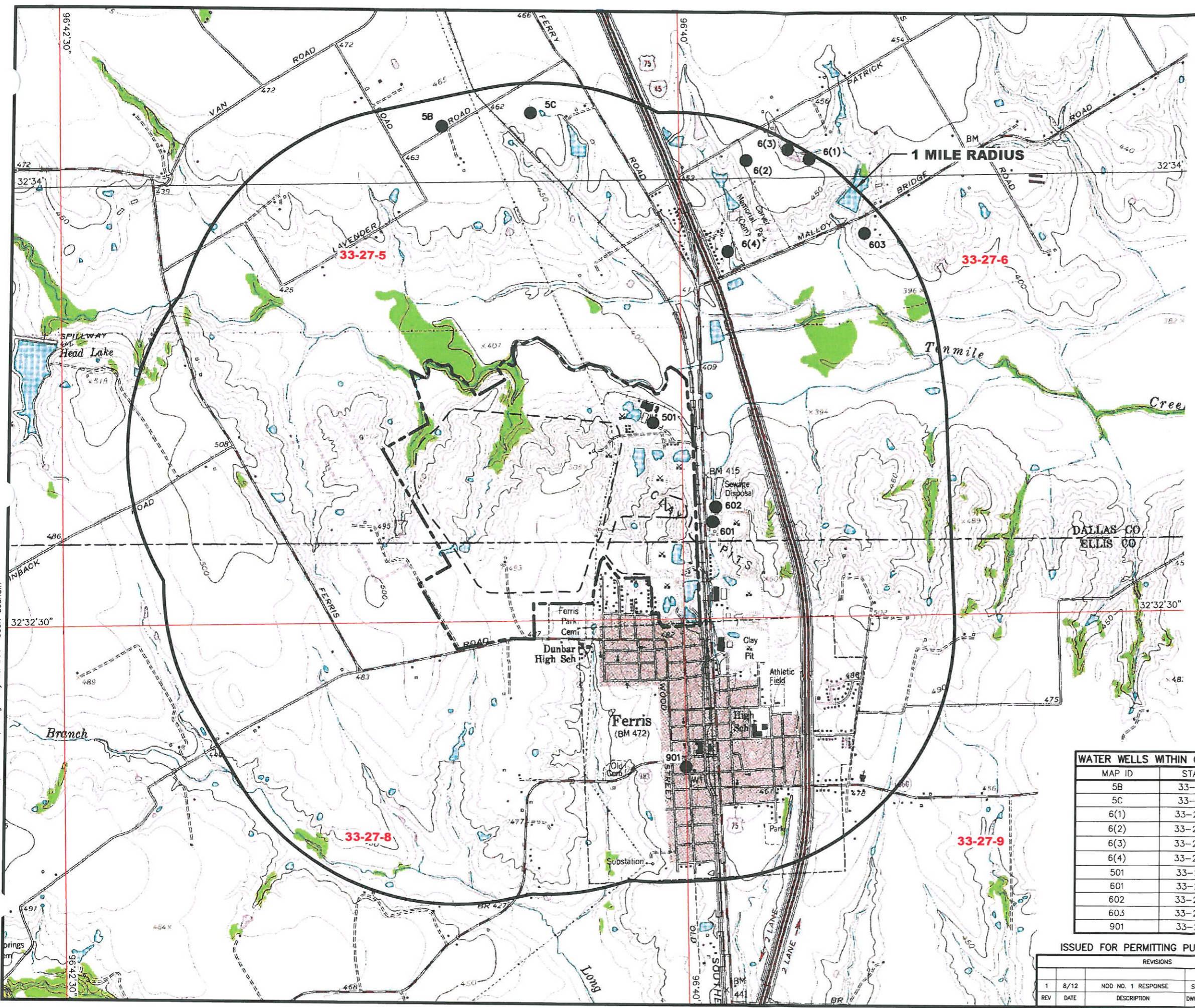


ISSUED FOR PERMITTING PURPOSES ONLY

<b>GENERAL TOPOGRAPHIC MAP</b>	
<b>WASTE MANAGEMENT OF TEXAS, INC. SKYLINE LANDFILL MAJOR PERMIT AMENDMENT</b>	
	BIGGS & MATHEWS ENVIRONMENTAL CONSULTING ENGINEERS MANSFIELD • WICHITA FALLS 817-563-1144
TBPE FIRM NO. F-256	TBPG FIRM NO. 50222
DSN. SAB	DATE: 04/12
DWN. SRC	SCALE: GRAPHIC
CHK. K/JW	DWG: IA.3-GenTopo.dwg
DRAWING <b>IA.3</b>	

REVISIONS						
REV	DATE	DESCRIPTION	DWN BY	DES BY	CHK BY	APP BY
1	8/12	NOD NO. 1 RESPONSE	SRC	K/JW	K/JW	K/JW

J:\101\01\120\Port\IA.3-GenTopo.dwg Layout: IA.4 User: scundiff



FERRIS, TEX.  
 SW/4 SFAGGVILLE 15 QUADRANGLE  
 N3230-W9637 5/7 5  
 1959  
 PHOTOREVISED 1968  
 AMS 6649 11 SW - SERIES Y882

ROAD CLASSIFICATION  
 Heavy-duty ——— Light-duty - - - - -  
 Medium-duty - - - - - Unimproved dirt - - - - -  
 Interstate Route U.S. Route State Route

LEGEND  
 - - - - - PERMIT BOUNDARY  
 - - - - - LANDFILL FOOTPRINT  
 - - - - - ONE MILE RADIUS  
 - - - - - WATER WELL ID GRID  
 33-27-5 WATER WELL GRID NUMBER  
 450 EXISTING 10' GROUND CONTOUR  
 SURFACE WATER BODY OR OTHER WATER  
 501 WATER WELL

- NOTES:
1. TOPOGRAPHIC BASE MAP DOWNLOADED FROM USGS WEBSITE ON JANUARY 31, 2012.
  2. WATER WELLS IDENTIFIED FROM ONLINE STATE RECORDS. REFER TO PART III, ATTACHMENT E, APPENDIX E1 FOR WATER WELL INFORMATION.
  3. THERE ARE NO SPRINGS LOCATED WITHIN ONE MILE OF THE PERMIT BOUNDARY.



WATER WELLS WITHIN ONE MILE	
MAP ID	STATE ID
5B	33-27-5B
5C	33-27-5C
6(1)	33-27-6(1)
6(2)	33-27-6(2)
6(3)	33-27-6(3)
6(4)	33-27-6(4)
501	33-27-501
601	33-27-601
602	33-27-602
603	33-27-603
901	33-27-901

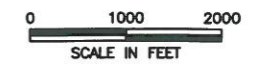
ISSUED FOR PERMITTING PURPOSES ONLY						TBPE FIRM NO. F-256		TBPG FIRM NO. 50222		
REVISIONS						DSN.	SAB	DATE	04/12	
1	8/12	NOD NO. 1 RESPONSE	SRC	KJW	KJW	DWN.	SRC	SCALE	GRAPHIC	
REV	DATE	DESCRIPTION	DWN BY	DES BY	CHK BY	APP BY	CHK.	KJW	DWG	IA.3-GenTopo.dwg

**WELLS, SPRINGS AND WATER BODIES LOCATION MAP**  
**WASTE MANAGEMENT OF TEXAS, INC.**  
**SKYLINE LANDFILL**  
**MAJOR PERMIT AMENDMENT**



**BIGGS & MATHEWS**  
 ENVIRONMENTAL  
 CONSULTING ENGINEERS  
 MANSFIELD • WICHITA FALLS  
 817-563-1144

DRAWING  
**IA.4**



**LEGEND**

- PERMIT BOUNDARY
- LANDFILL FOOTPRINT
- ONE MILE RADIUS

**NOTES:**

1. AERIAL PHOTOGRAPH PROVIDED BY AERO-METRIC FROM AERIAL PHOTOGRAPHY FLOWN MARCH 6, 2011.
2. REFER TO PART II, APPENDIX IIB—LAND USE ANALYSIS FOR DETAILED LAND USE INFORMATION, LAND USE MAP, AND GENERAL CHARACTER OF AREAS ADJACENT TO THE FACILITY AS PREPARED BY JOHN WORRALL CONSULTING.
3. GENERAL CHARACTER OF AREAS WITHIN ONE MILE OF THE PERMIT BOUNDARY PROVIDED BY JOHN WORRALL CONSULTING.

GENERAL CHARACTER	
LAND USE	PERCENT
OPEN	83
RESIDENTIAL	9
PUBLIC/QUASI-PUBLIC	6
INDUSTRIAL	1
COMMERCIAL	<1
TOTAL	100%



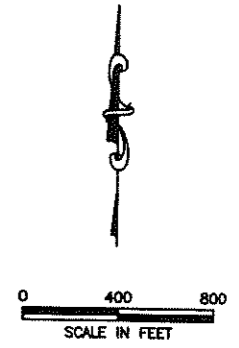
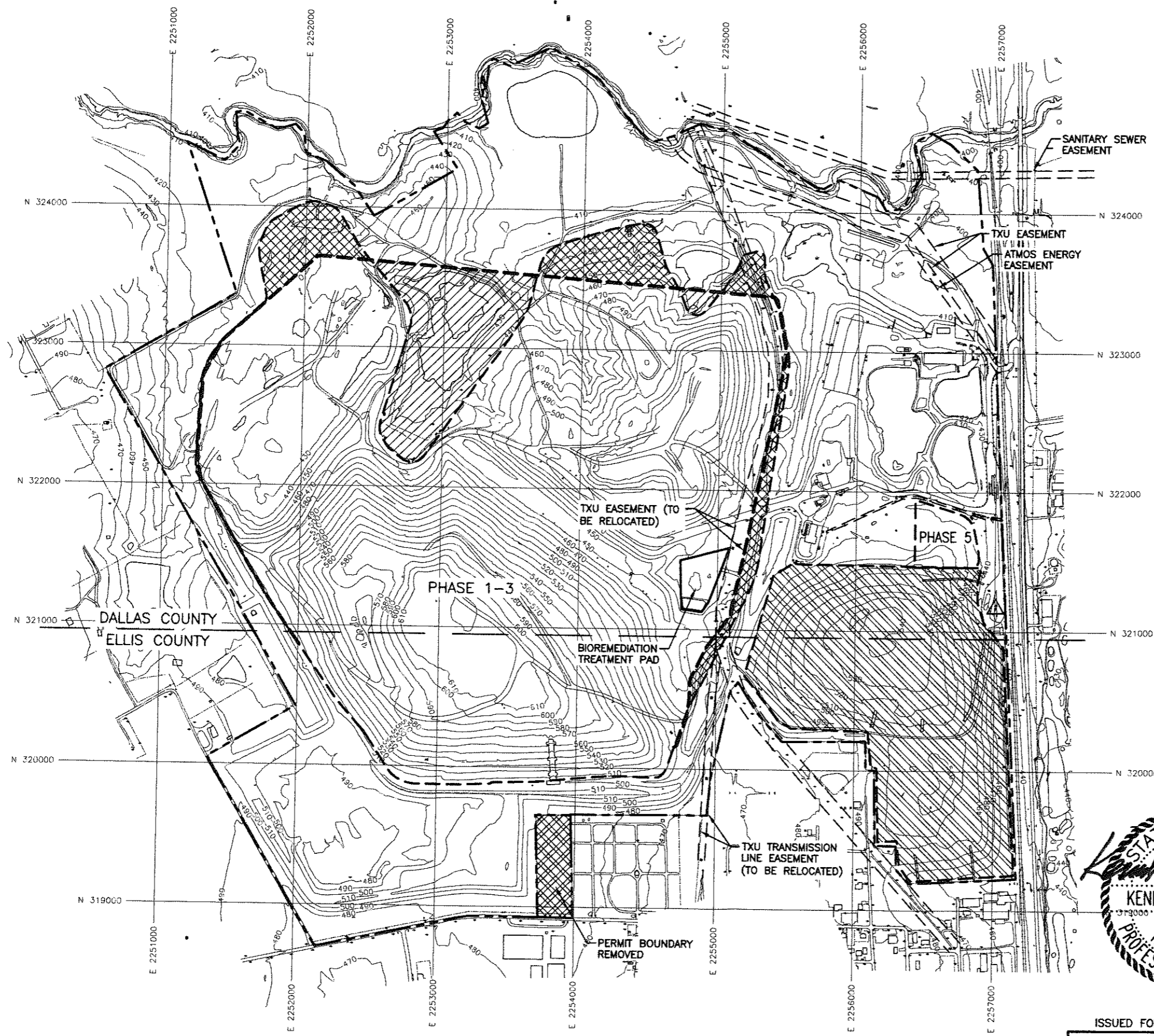
**AERIAL PHOTOGRAPH**  
**WASTE MANAGEMENT OF TEXAS, INC.**  
**SKYLINE LANDFILL**  
**MAJOR PERMIT AMENDMENT**

**BIGGS & MATHEWS**  
 ENVIRONMENTAL  
 CONSULTING ENGINEERS  
 MANSFIELD • WICHITA FALLS  
 817-563-1144

ISSUED FOR PERMITTING PURPOSES ONLY

REVISIONS								TBPE FIRM NO. F-256		TBPG FIRM NO. 50222	
1	8/12	NOD NO. 1 RESPONSE	SRC	KJW	KJW	KJW		DSN. SAB	DATE : 04/12	DRAWING	
REV	DATE	DESCRIPTION	DWN BY	DES BY	CHK BY	APP BY		DWN. SRC	SCALE : GRAPHIC	IA.5	
								CHK. KJW	DWG : IA.5-Aerial.dwg		

J:\101\01\120\Part 1\A.6-SitePlan.dwg Layout: Layout1 User: scundiff



**LEGEND**

- PERMIT BOUNDARY
- - - EXISTING LANDFILL FOOTPRINT
- - - PROPOSED LANDFILL FOOTPRINT
- 550 EXISTING 10' GROUND CONTOUR
- N 323000 STATE PLANE GRID (NAD 27)
- [Hatched Box] PRE-SUBTITLE D AREA WITH FINAL COVER
- [Diagonal Lines Box] FOOTPRINT ADDED
- [Cross-hatched Box] FOOTPRINT REMOVED

- NOTE:**
- EXISTING CONTOURS COMPILED BY AEROMETRIC FROM AERIAL PHOTOGRAPHY. FLOWN MARCH 6, 2011. COORDINATE SYSTEM IS BASED ON TEXAS STATE PLANE NAD 27, TEXAS NORTH CENTRAL ZONE, US FEET.
  - LANDFILL PERMIT BOUNDARY REVISED: 661.74 ACRES.
  - PROPOSED LANDFILL FOOTPRINT PHASES 1 THROUGH 3: 284.4 ACRES.
  - LANDFILL FOOTPRINT PHASE 5: 4.2 ACRES.
  - PRE-SUBTITLE D AREA: 68.3 ACRES.

LANDFILL FOOTPRINT	
PERMITTED FOOTPRINT	286.4 Ac.
FOOTPRINT REMOVED	-20.1 Ac.
FOOTPRINT ADDED	+22.3 Ac.
PROPOSED FOOTPRINT	288.6 Ac.

PERMIT BOUNDARY	
CURRENT BOUNDARY	666.95 Ac.
BOUNDARY REMOVED	-5.21 Ac.
PROPOSED BOUNDARY	661.74 Ac.



**SITE PLAN**  
**WASTE MANAGEMENT OF TEXAS, INC.**  
**SKYLINE LANDFILL**  
**MAJOR PERMIT AMENDMENT**


**BIGGS & MATHEWS**  
 ENVIRONMENTAL  
 CONSULTING ENGINEERS  
 MANSFIELD • WICHITA FALLS  
 817-563-1144

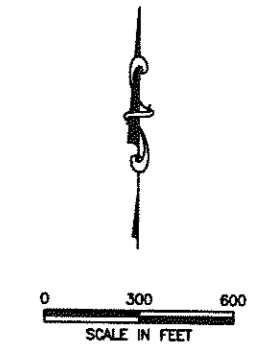
ISSUED FOR PERMITTING PURPOSES ONLY

REVISIONS						TBPE FIRM NO. F-256		TBPG FIRM NO. 50222	
1	8/12	NOD NO. 1 RESPONSE	SRC	KJW	KJW	DSN.	SAB	DATE :	04/12
REV	DATE	DESCRIPTION	DWN BY	DES BY	CHK BY	DWN.	SRC	SCALE :	GRAPHIC
						CHK.	KJW	DWG :	IA.6-SitePlan.dwg

**DRAWING**  
**IA.6**



J:\101\01\120\Port IA.7 - GenSitePlan.dwg Layout: Layout1 User: scundiff



REFER TO DRAWING IA.8 FOR  
ENTRANCE ROAD AND  
ENTRANCE FACILITIES PLAN

**LEGEND**

	PERMIT BOUNDARY
	LANDFILL FOOTPRINT
	EXISTING 10' GROUND CONTOUR
	STATE PLANE GRID (NAD 27)
	PHASE BOUNDARY
	PRE-SUBTITLE D AREA WITH FINAL COVER

**NOTE:**  
1. EXISTING CONTOURS COMPILED BY AEROMETRIC FROM AERIAL PHOTOGRAPHY, FLOWN MARCH 6, 2011. COORDINATE SYSTEM IS BASED ON TEXAS STATE PLANE NAD 27, TEXAS NORTH CENTRAL ZONE, US FEET.

SUBTITLE D LANDFILL FOOTPRINT	
PHASE NO.	PLAN AREA (AC)
1A	64.9
1B	53.7
2	40.1
3	125.7
5	4.2
<b>TOTAL</b>	<b>288.6</b>
PRE-SUBTITLE D LANDFILL FOOTPRINT	
	68.3
<b>TOTAL</b>	<b>356.9</b>



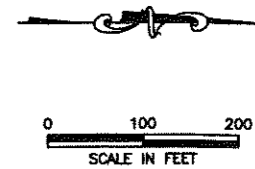
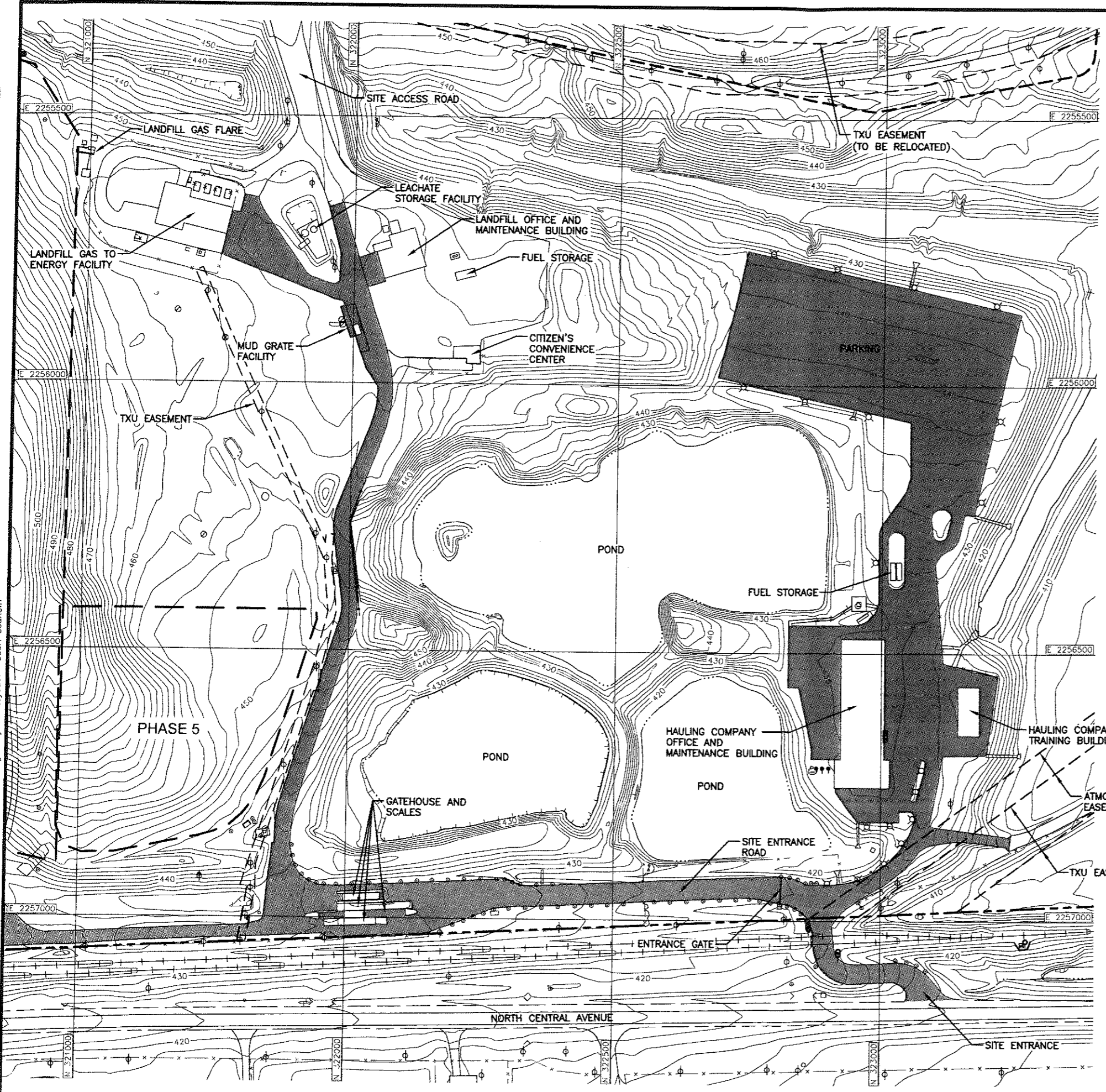
ISSUED FOR PERMITTING PURPOSES ONLY

**GENERAL SITE PLAN**  
**WASTE MANAGEMENT OF TEXAS, INC.**  
**SKYLINE LANDFILL**  
**MAJOR PERMIT AMENDMENT**

BIGGS & MATHEWS  
ENVIRONMENTAL  
CONSULTING ENGINEERS  
MANSFIELD • WICHITA FALLS  
817-563-1144

REVISIONS						TBPE FIRM NO. F-256		TBPG FIRM NO. 50222	
1	8/12	NOD NO. 1 RESPONSE	SRC	KJW	KJW	DSN. SAB	DATE : 04/12	DRAWING	
REV	DATE	DESCRIPTION	DWN BY	DES BY	CHK BY	DWN. SRC	SCALE : GRAPHIC	IA.7	
						CHK. KJW	DWG : IA.7-GenSitePlan.dwg		

J:\101\01\120\Port\IA.8-EntrancePlan.dwg Layout: Layout1 User: acundiff



**LEGEND**

- PERMIT BOUNDARY
- - - LANDFILL FOOTPRINT
- 550 EXISTING 2' GROUND CONTOUR
- N 323000 STATE PLANE GRID (NAD 27)
- CONCRETE PAVEMENT
- RAILROAD TRACK
- FENCELINE
- POWER POLE
- LIGHT POLE
- POST

**NOTES:**

1. EXISTING CONTOURS COMPILED BY AEROMETRIC FROM AERIAL PHOTOGRAPHY. FLOWN MARCH 6, 2011. COORDINATE SYSTEM IS BASED ON TEXAS STATE PLANE NAD 27, TEXAS NORTH CENTRAL ZONE, US FEET.
2. THE LANDFILL GAS TO ENERGY FACILITY, CITIZEN'S CONVENIENCE CENTER, LEACHATE STORAGE FACILITY, MUD GRATE FACILITY, LANDFILL OFFICE AND MAINTENANCE FACILITY, AND GATE HOUSE AND SCALES ARE EXISTING.



**ENTRANCE ROAD AND ENTRANCE FACILITIES PLAN**  
**WASTE MANAGEMENT OF TEXAS, INC**  
**SKYLINE LANDFILL**  
**MAJOR PERMIT AMENDMENT**



BIGGS & MATHEWS  
 ENVIRONMENTAL  
 CONSULTING ENGINEERS  
 MANSFIELD • WICHITA FALLS  
 817-563-1144

ISSUED FOR PERMITTING PURPOSES ONLY

REVISIONS							TBPE FIRM NO. F-256		TBPG FIRM NO. 50222	
1	8/12	NOD NO. 1 RESPONSE	SRC	KJW	KJW	KJW	DSN. SAB	DATE :	04/12	
REV	DATE	DESCRIPTION	DWN BY	DES BY	CHK BY	APP BY	DWN. SRC	SCALE :	GRAPHIC	
							CHK. KJW	DWG :	IA.8-EntrancePlan.dwg	

J:\101\01\120\Part 1\IA.9-BufferPlan.dwg Layout: Layout1 User: scundiff




- LEGEND**
- PERMIT BOUNDARY
  - LANDFILL FOOTPRINT
  - 550' EXISTING 10' GROUND CONTOUR
  - STATE PLANE GRID (NAD 27)
  - PHASE BOUNDARY
  - ▨ PRE-SUBTITLE D AREA WITH FINAL COVER

- NOTE:**
1. EXISTING CONTOURS COMPILED BY AEROMETRIC FROM AERIAL PHOTOGRAPHY. FLOWN MARCH 6, 2011. COORDINATE SYSTEM IS BASED ON TEXAS STATE PLANE NAD 27, TEXAS NORTH CENTRAL ZONE, US FEET.
  2. SOLID WASTE UNLOADING, STORAGE, DISPOSAL, AND PROCESSING OPERATIONS WILL NOT OCCUR WITHIN THE 125-FOOT BUFFER ZONE.
  3. DISTANCES FROM THE PERMIT BOUNDARY TO THE LANDFILL FOOTPRINT ARE SHOWN. OPERATIONS LOCATED WITHIN THE LANDFILL FOOTPRINT INCLUDE THE WASTE DISPOSAL AREAS, BIOREMEDIATION TREATMENT PAD, LARGE ITEM STORAGE AREA, LIQUID STABILIZATION AREA, AND REUSABLE MATERIALS STAGING AREA.
  4. DISTANCES FROM THE PERMIT BOUNDARY TO THE OPERATIONS LOCATED BETWEEN THE LANDFILL FOOTPRINT AND THE PERMIT BOUNDARY ARE SHOWN. THESE OPERATIONS INCLUDE THE LANDFILL GAS TO ENERGY FACILITY, CITIZEN'S CONVENIENCE CENTER, LEACHATE STORAGE FACILITY, AND MUD GRATE FACILITY.
  5. THERE ARE NO SOLID WASTE UNLOADING, STORAGE, DISPOSAL OR PROCESSING OPERATIONS TO BE CONDUCTED WITHIN THE PRE-SUBTITLE D AREA WITH FINAL COVER OR IT'S BUFFER ZONE.



**BUFFER ZONE PLAN**

**WASTE MANAGEMENT OF TEXAS, INC.**  
**SKYLINE LANDFILL**  
**MAJOR PERMIT AMENDMENT**



BIGGS & MATHEWS  
 ENVIRONMENTAL  
 CONSULTING ENGINEERS  
 MANSFIELD • WICHITA FALLS  
 817-563-1144

ISSUED FOR PERMITTING PURPOSES ONLY

REVISIONS		DATE	DESCRIPTION	DWN BY	DES BY	CHK BY	APP BY

DSN. SAB	DATE : 08/12	DRAWING <b>IA.9</b>
DWN. SRC	SCALE : GRAPHIC	
CHK. KJW	DWG : IA.9-BufferPlan.dwg	