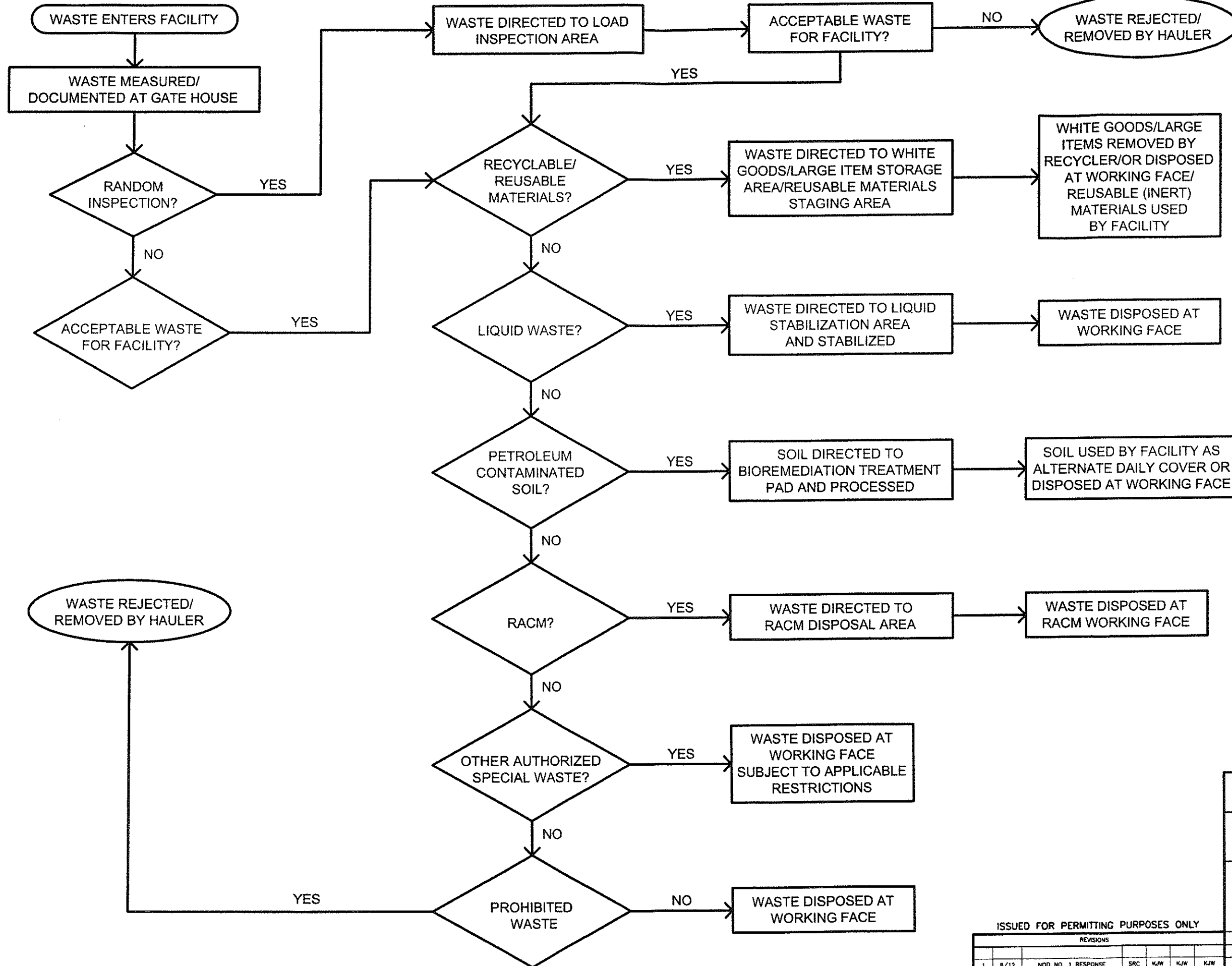


**SKYLINE LANDFILL**

**APPENDIX B1**

**DRAWINGS**

J:\101\01\120\AT B\B1\_WasteFlow.dwg Layout: B.1 User: scundiff



**WASTE MOVEMENT FLOW DIAGRAM**  
**WASTE MANAGEMENT OF TEXAS, INC. SKYLINE LANDFILL MAJOR PERMIT AMENDMENT**

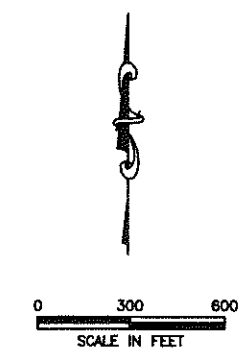
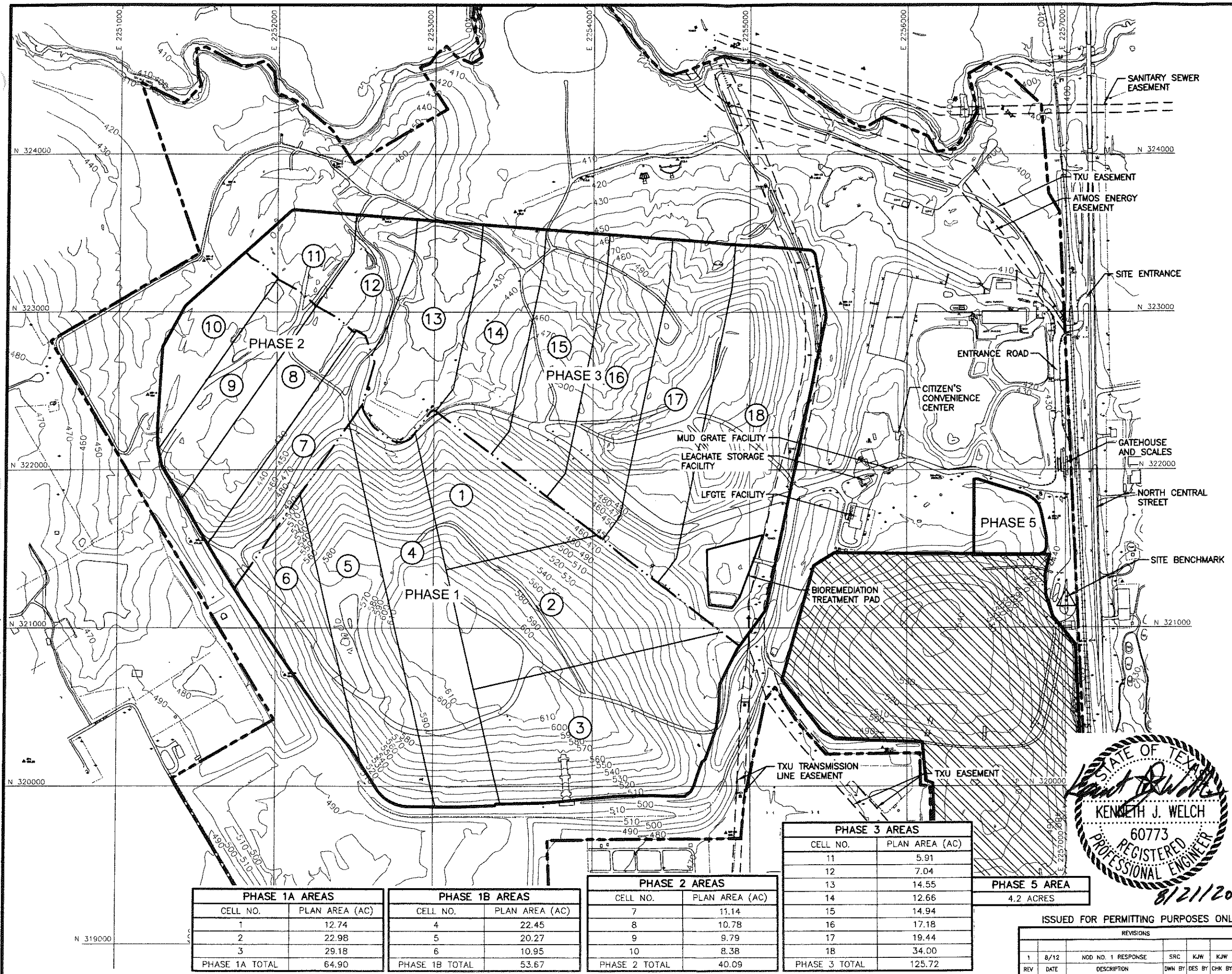
**BIGGS & MATHEWS ENVIRONMENTAL CONSULTING ENGINEERS**  
 MANSFIELD • WICHITA FALLS  
 817-563-1144

ISSUED FOR PERMITTING PURPOSES ONLY

REVISIONS							TBPE FIRM NO. F-256		TBPG FIRM NO. 50222	
1	8/12	NOD NO. 1 RESPONSE	SRC	KJW	KJW	KJW	DSN. SAB	DATE :	04/12	
REV	DATE	DESCRIPTION	DWN BY	DES BY	CHK BY	APP BY	DWN. SRC	SCALE :	GRAPHIC	
							CHK. KJW	DWG :	B1_WasteFlow.dwg	

DRAWING **B.1**

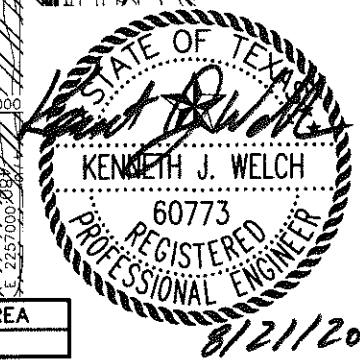
J:\101\01\120\ATT\_B\B2\_WD-Schematic.dwg Layout: Layout1 User: scundiff



**LEGEND**

- PERMIT BOUNDARY
- LANDFILL FOOTPRINT
- EXISTING 10' GROUND CONTOUR
- STATE PLANE GRID (NAD 27)
- PHASE BOUNDARY
- CELL BOUNDARY
- CELL DESIGNATION
- PRE-SUBTITLE D AREA WITH FINAL COVER

- NOTE:**
- EXISTING CONTOURS COMPILED BY AEROMETRIC FROM AERIAL PHOTOGRAPHY. FLOWN MARCH 6, 2011. COORDINATE SYSTEM IS BASED ON TEXAS STATE PLANE NAD 27, TEXAS NORTH CENTRAL ZONE, US FEET.
  - THE ACTIVE WASTE DISPOSAL AREA WILL MOVE AS LANDFILLING PROGRESSES. THE ACTIVE WASTE DISPOSAL AREA ENCOMPASSES PHASES 1A, 1B AND PHASE 2, CELLS 7, 8, AND 9.
  - THE RACM DISPOSAL AREA WILL MOVE AS LANDFILLING PROGRESSES.
  - THE LARGE ITEM STORAGE AREA WILL BE LOCATED WITHIN THE LANDFILL FOOTPRINT AND WILL BE RELOCATED PERIODICALLY AS THE ACTIVE WORKING FACE MOVES.
  - THE REUSABLE AND RECYCLABLE MATERIALS STAGING AREA WILL BE LOCATED ABOVE THE EXISTING LINED AREAS AND WILL BE RELOCATED PERIODICALLY AS THE ACTIVE WORKING FACE MOVES.
  - THE BIOREMEDIATION TREATMENT PAD WILL REMAIN IN ITS CURRENT LOCATION UNTIL CONSTRUCTION OF CELL 18. THE PAD WILL THEN BE REMOVED.
  - THE LIQUID STABILIZATION AREA WILL BE LOCATED ABOVE EXISTING LINED AREAS AND WILL BE RELOCATED PERIODICALLY AS THE ACTIVE WORKING FACE MOVES.
  - REFER TO ATTACHMENT B NARRATIVE FOR DISCUSSION ON SUBTITLE D FINAL COVER, ALTERNATE FINAL COVER, AND PRE-SUBTITLE D FINAL COVER. THE SUBTITLE D FINAL COVER WILL BE CONSTRUCTED OVER PORTIONS OF PHASE 3. THE ALTERNATE FINAL COVER HAS BEEN CONSTRUCTED OVER PORTIONS OF PHASE 1 AND WILL BE CONSTRUCTED OVER PHASE 1 (REMAINING PORTION), PHASE 2, AND PHASE 3.



PHASE 1A AREAS	
CELL NO.	PLAN AREA (AC)
1	12.74
2	22.98
3	29.18
<b>PHASE 1A TOTAL</b>	<b>64.90</b>

PHASE 1B AREAS	
CELL NO.	PLAN AREA (AC)
4	22.45
5	20.27
6	10.95
<b>PHASE 1B TOTAL</b>	<b>53.67</b>

PHASE 2 AREAS	
CELL NO.	PLAN AREA (AC)
7	11.14
8	10.78
9	9.79
10	8.38
<b>PHASE 2 TOTAL</b>	<b>40.09</b>

PHASE 3 AREAS	
CELL NO.	PLAN AREA (AC)
11	5.91
12	7.04
13	14.55
14	12.66
15	14.94
16	17.18
17	19.44
18	34.00
<b>PHASE 3 TOTAL</b>	<b>125.72</b>

**PHASE 5 AREA**  
4.2 ACRES

ISSUED FOR PERMITTING PURPOSES ONLY				
REVISIONS				
REV	DATE	DESCRIPTION	DWN BY	APP BY
1	8/12	NOD NO. 1 RESPONSE	SRC	KJW
			DES BY	CHK BY
			APP BY	

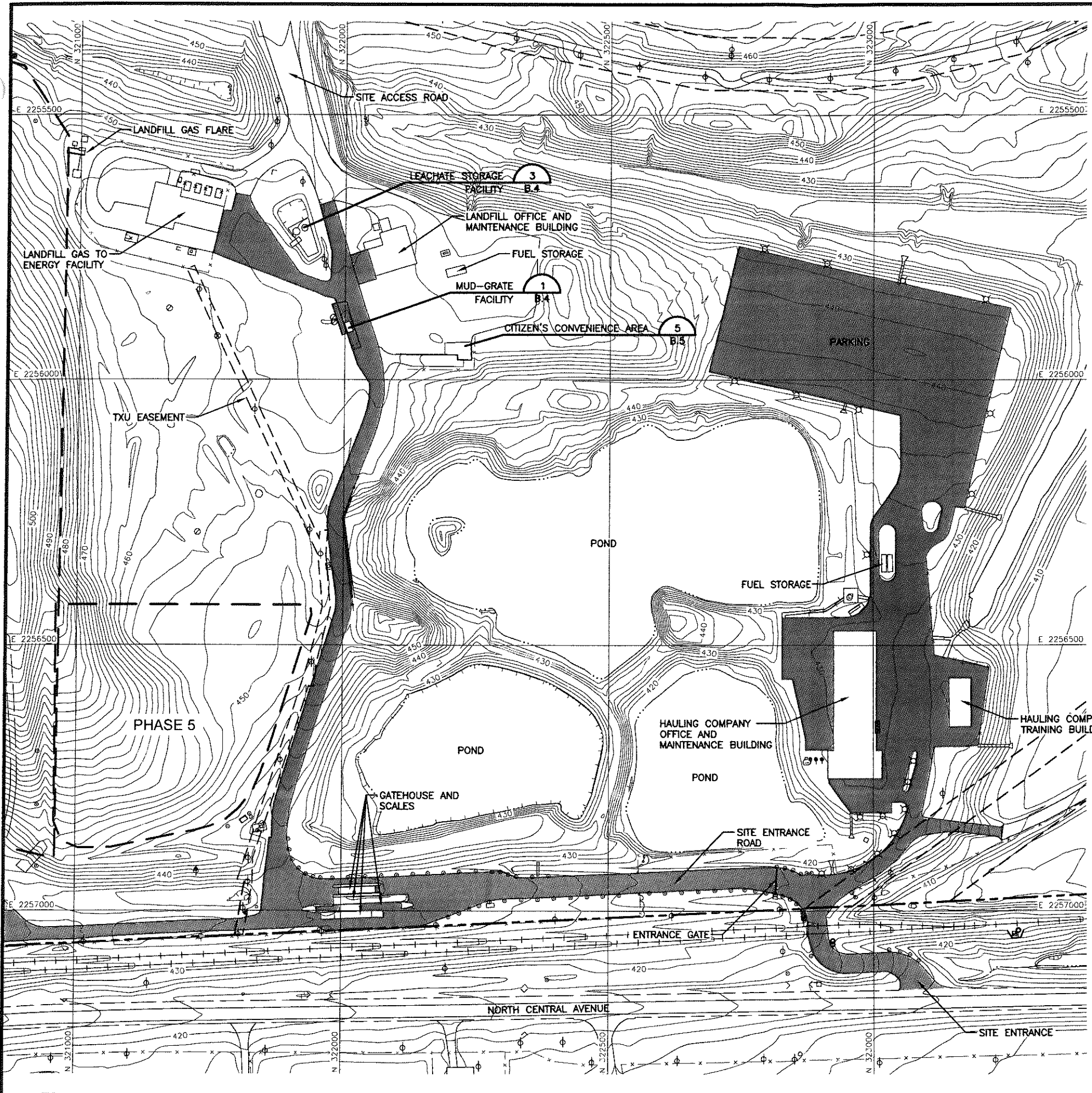
DSN. SAB	DATE: 04/12	DRAWING
DWN. SRC	SCALE: GRAPHIC	<b>B.2</b>
CHK. KJW	DWG: B2_WD-Schematic.dwg	

**WASTE DISPOSAL, PROCESSING AND STORAGE SCHEMATIC PLAN**  
**WASTE MANAGEMENT OF TEXAS, INC.**  
**SKYLINE LANDFILL**  
**MAJOR PERMIT AMENDMENT**

**BIGGS & MATHEWS**  
 ENVIRONMENTAL CONSULTING ENGINEERS  
 MANSFIELD • WICHITA FALLS  
 817-563-1144

TBPE FIRM NO. F-256	TBPG FIRM NO. 50222
---------------------	---------------------

J:\101\01\120\ATT B\B3\_WP-Schematic.dwg Layout: Layout1 User: scundiff



**LEGEND**

- PERMIT BOUNDARY
- - - LANDFILL FOOTPRINT
- 5.0 --- EXISTING 2' GROUND CONTOUR
- N 323000 STATE PLANE GRID (NAD 27)
- CONCRETE PAVEMENT
- φ POWER POLE
- ⊗ LIGHT POLE
- POST

**NOTES:**

1. EXISTING CONTOURS COMPILED BY AEROMETRIC FROM AERIAL PHOTOGRAPHY. FLOWN MARCH 6, 2011. COORDINATE SYSTEM IS BASED ON TEXAS STATE PLANE NAD 27, TEXAS NORTH CENTRAL ZONE, US FEET.
2. THE LANDFILL GAS TO ENERGY FACILITY, CITIZEN'S CONVENIENCE CENTER, LEACHATE STORAGE FACILITY, MUD GRATE FACILITY, LANDFILL OFFICE AND MAINTENANCE FACILITY, AND GATE HOUSE AND SCALES ARE EXISTING.



**WASTE PROCESSING AND STORAGE FACILITIES SCHEMATIC PLAN**  
**WASTE MANAGEMENT OF TEXAS, INC.**  
**SKYLINE LANDFILL**  
**MAJOR PERMIT AMENDMENT**



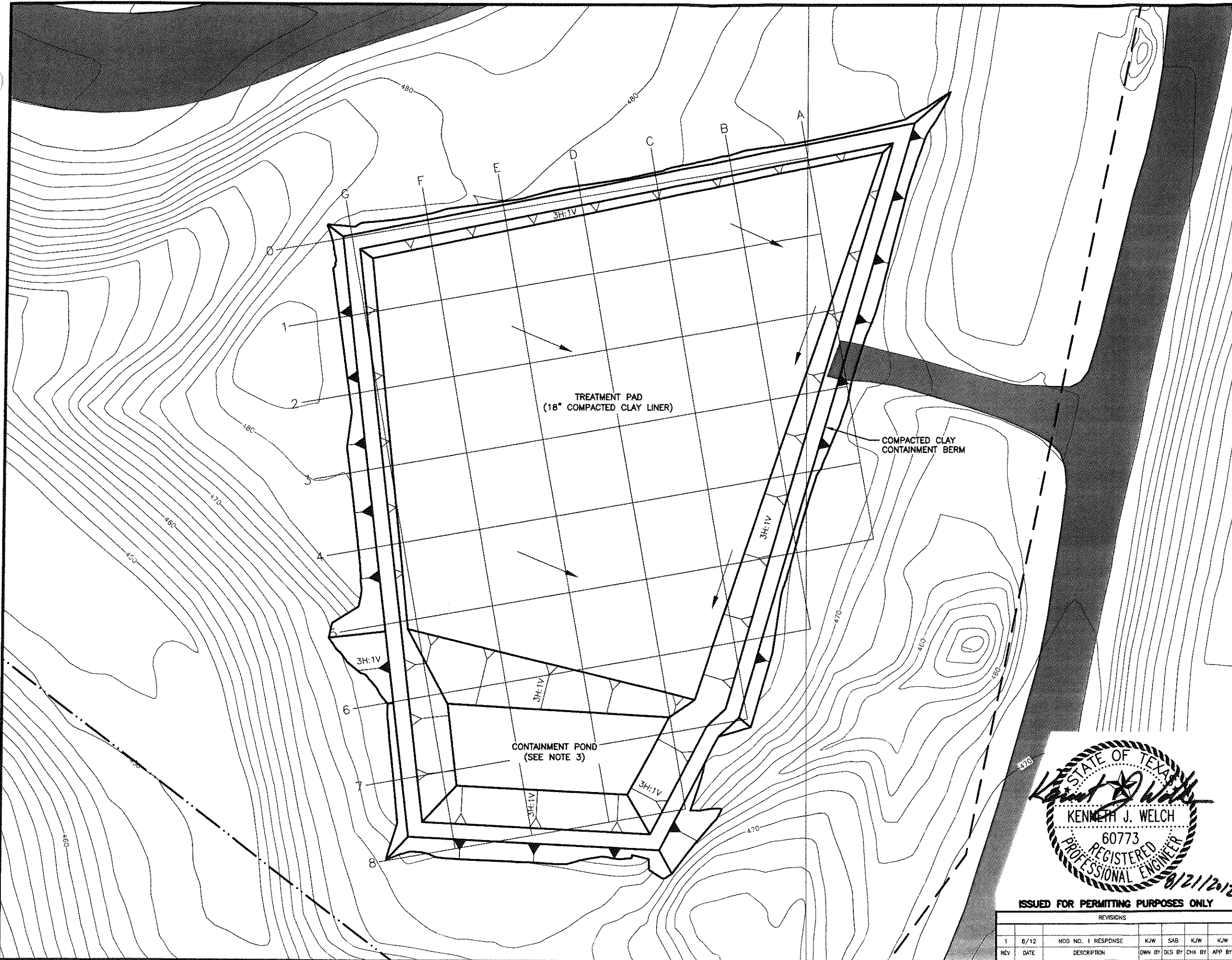
**BIGGS & MATHEWS**  
**ENVIRONMENTAL**  
**CONSULTING ENGINEERS**  
 MANSFIELD • WICHITA FALLS  
 817-563-1144

ISSUED FOR PERMITTING PURPOSES ONLY

REVISIONS						TBPE FIRM NO. F-256		TBPG FIRM NO. 50222	
REV	DATE	DESCRIPTION	DWN BY	DES BY	CHK BY	APP BY	DSN.	SAB	DATE
1	8/12	NOD NO. 1 RESPONSE	SRC	KJW	KJW	KJW	DWN.	SRC	04/12
							CHK.	KJW	SCALE : GRAPHIC
									DWG : B3_WP-Schematic.dwg

DRAWING  
**B.3**

J:\101\01\120\AIT\_B\B7\_BioPod.dwg Layout: Layout 1 User: scundiff



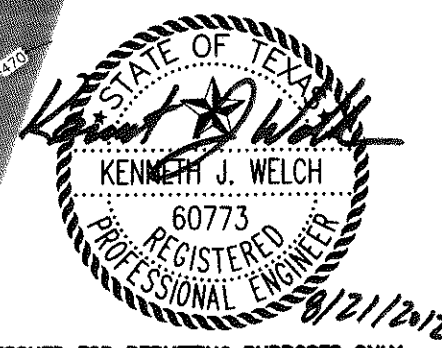
0 30 60  
SCALE IN FEET

**LEGEND**

- LANDFILL FOOTPRINT
- . - . PHASE BOUNDARY
- █ ACCESS ROAD
- ~ 470 ~ EXISTING 2' GROUND CONTOUR
- A  
+ BIOREMEDIATION PAD GRID
- SLOPE DIRECTION

**NOTES:**

1. EXISTING CONTOURS COMPILED BY AEROMETRIC FROM AERIAL SURVEY FLOWN MARCH 6, 2011. COORDINATE SYSTEM IS BASED ON TEXAS STATE PLANE, TEXAS NORTH CENTRAL ZONE, NAD 27.
2. TREATMENT PAD IS CONSTRUCTED WITH A MINIMUM 18-INCH THICK COMPACTED CLAY LINER AND IS SURROUNDED BY A COMPACTED CLAY CONTAINMENT BERM THAT IS SIZED FOR THE 25-YEAR, 24-HOUR STORM EVENT.
3. TREATMENT PAD SLOPES TO THE CONTAINMENT POND. WATER THAT COMES INTO CONTACT WITH THE CONTAMINATED SOILS WILL BE HANDLED AS CONTAMINATED WATER.
4. SLOPES SHOWN ARE 3H:1V.
5. BERMS MAY BE CONSTRUCTED TO SEPARATE ACTIVE AND INACTIVE AREAS.
6. DISCUSSION ON THE BIOREMEDIATION TREATMENT IS PROVIDED IN PART III, ATTACHMENT B.
7. THE BIOREMEDIATION TREATMENT PAD IS UNDERLAIN BY CLAYEY SOILS WITHIN THE WEATHERED (STRATUM I) AND UNWEATHERED (STRATUM II) TAYLOR. THE UNDERLYING CLAYEY SOILS SERVE AS LOW HYDRAULIC CONDUCTIVITY FOUNDATION.



ISSUED FOR PERMITTING PURPOSES ONLY

<b>BIOREMEDIATION TREATMENT PAD</b>	
<b>WASTE MANAGEMENT OF TEXAS, INC.</b> SKYLINE LANDFILL MAJOR PERMIT AMENDMENT	
	BIGGS & MATHEWS ENVIRONMENTAL CONSULTING ENGINEERS MANSFIELD • WICHITA FALLS 817-563-1144
REVISIONS	TBPE FIRM NO. F-256      TBPC FIRM NO. 50222
1    8/12    NOD NO. 1 RESPONSE    KJW    SAB    KJW    KJW	DSN.    SAB    DATE :    04/12
REV    DATE    DESCRIPTION    DWN BY    DES BY    CHK BY    APP BY	DWN.    SRC    SCALE :    GRAPHIC
	CHK.    KJW    DWG :    B7_BioPod.dwg
	DRAWING <b>B.7</b>