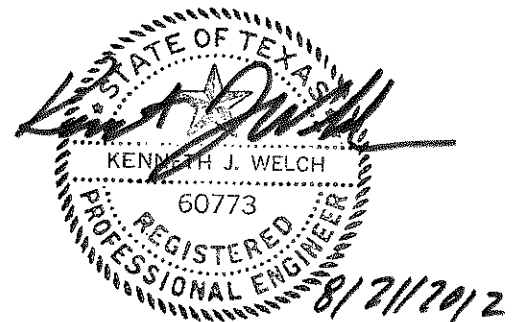


SKYLINE LANDFILL

ATTACHMENT C1

APPENDIX C1-A

CURRENT PERMITTED/POSTDEVELOPMENT COMPARISON



Includes pages C1-A-1 through C1-A-5

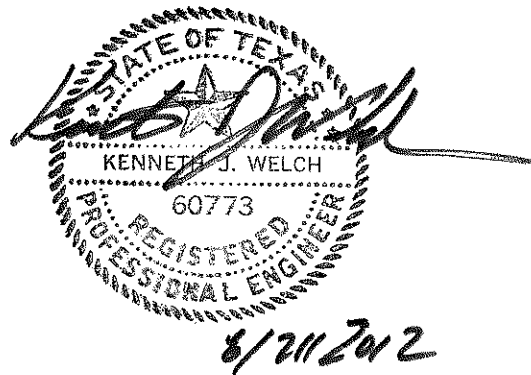
CONTENTS

Regional Drainage Area Map C1-A-1

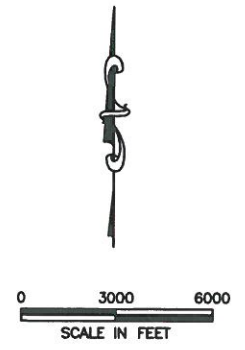
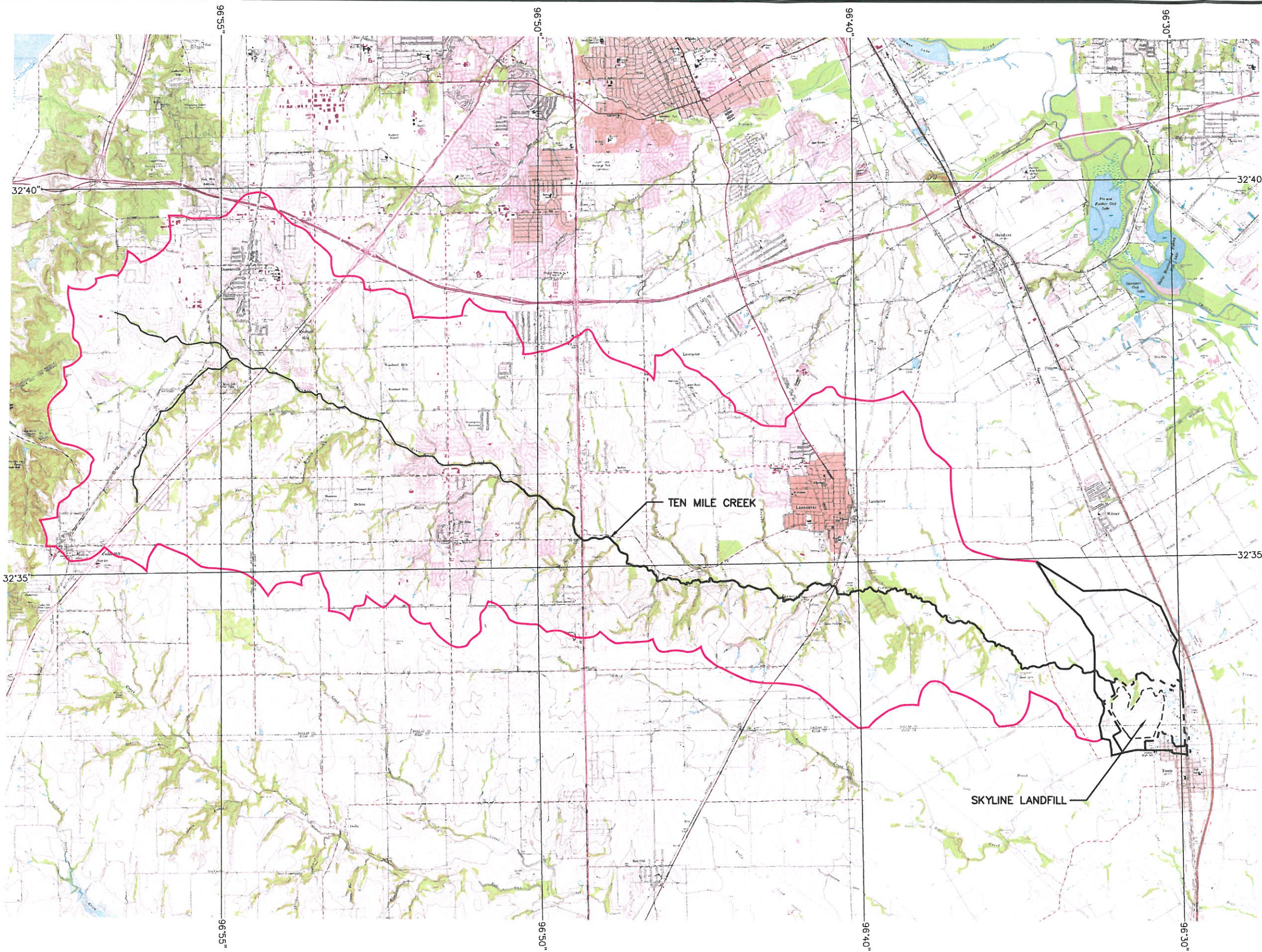
Current Permitted Boundary Analysis Summary C1-A-2

Postdeveloped Boundary Analysis Summary C1-A-3

Current Permitted/Postdeveloped Boundary Analysis Summary Table C1-A-4



J:\101\01\120\ATT C\C1_A_1.dwg Layout: Layout1 User: scundiff



LEGEND

- PERMIT BOUNDARY
- PERMITTED LIMIT OF WASTE
- WATERSHED BOUNDARY
- DRAINAGE BOUNDARY

CEDAR HILL, TEX. 32096-E8-TF-024 1959 PHOTOREVISED 1982 DMA 6649 III SW-SERIES V882	DUNCANVILLE, TEX. N3237.5-W9652.5/7.5 1959 PHOTOREVISED 1981 DMA 6649 III NW-SERIES V882
FERRIS, TEX. SW/4 SEAGOVILLE 15' QUADRANGLE N3230-W9637.5/7.5 1959 PHOTOREVISED 1968 AMS 6649 II SW-SERIES V982	HUTCHINS, TEX. 32096-F6-TF-024 1958 PHOTOREVISED 1968 AND 1973 DMA 6649 II NW-SERIES V882
LANCASTER, TEX. 32096-E7-TF-024 1959 PHOTOREVISED 1981 DMA 6649 III SE-SERIES V882	OAK CLIFF, TEX. N3237.5-W9645/7.5 1958 PHOTOREVISED 1981 DMA 6645 III NE-SERIES V882

- ROAD CLASSIFICATION**
- Heavy-duty —
 - Medium-duty - - -
 - Light-duty —
 - Unimproved dirt - - -
 - U.S. Route
 - State Route



REGIONAL DRAINAGE AREA MAP
WASTE MANAGEMENT OF TEXAS, INC.
SKYLINE LANDFILL
MAJOR PERMIT AMENDMENT



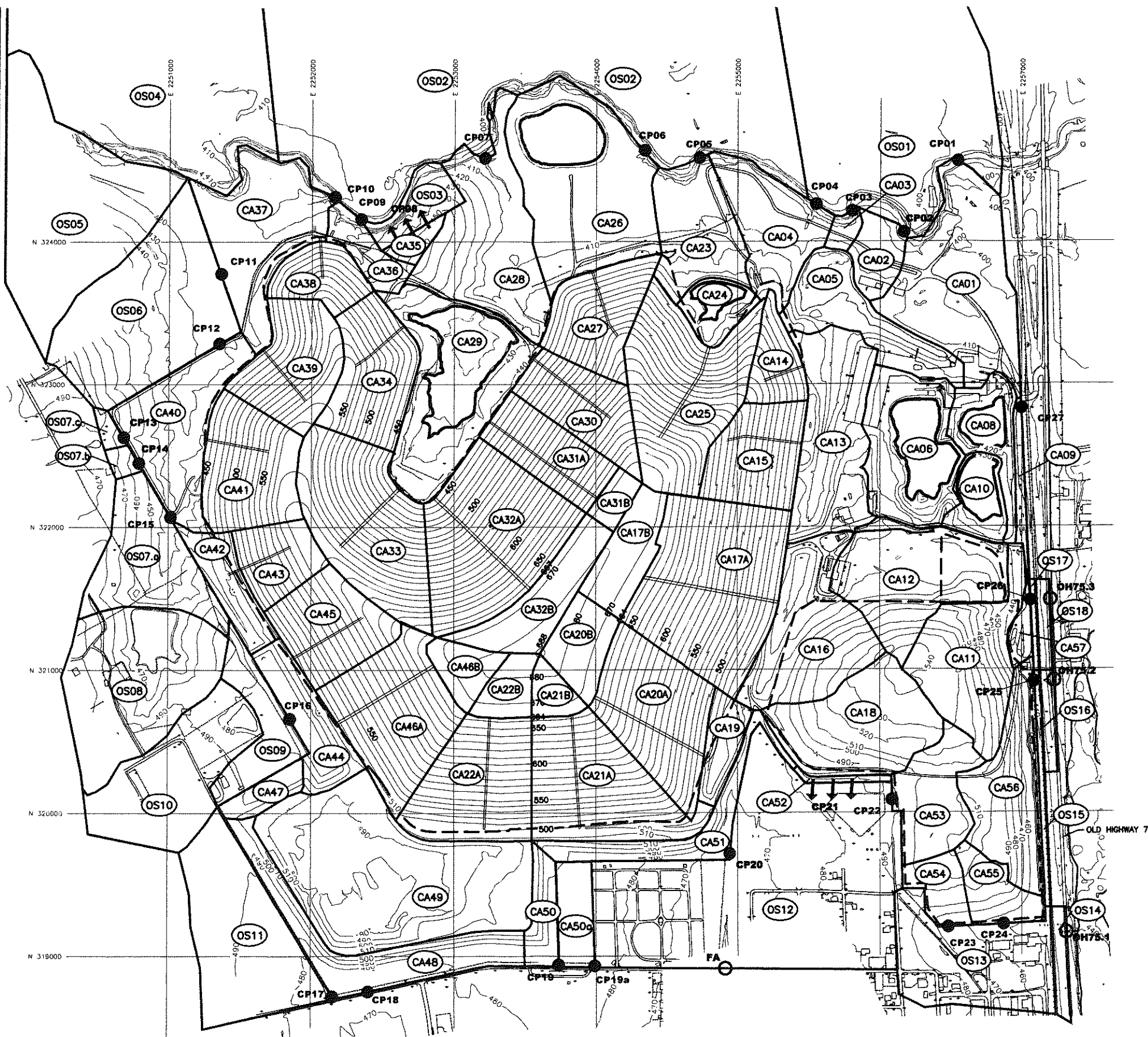
BIGGS & MATHEWS
ENVIRONMENTAL
CONSULTING ENGINEERS
MANSFIELD
DALLAS • WICHITA FALLS
817-563-1144

ISSUED FOR PERMITTING PURPOSES ONLY

REVISIONS					TBPE FIRM NO. F-256	TBPG FIRM NO. 50222
1	08/12	NOD NO. 1 RESPONSE	BBB	FAW	FAW	KJW
REV	DATE	DESCRIPTION	DWN BY	DES BY	CHK BY	APP BY
				DSN. FAW	DATE : 04/12	DRAWING
				DWN. BBB	SCALE : GRAPHIC	C1-A-1
				CHK. KJW	DWG : C1_A_1.dwg	

J:\101\01\120\ATT\C1_A_2.dwg Layout1 User: bbailes

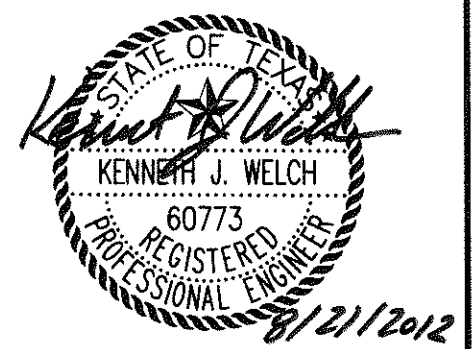
CURRENT PERMITTED BOUNDARY ANALYSIS SUMMARY				
BOUNDARY COMPARISON POINT	25-YEAR FLOW RATE (cfs)	25-YEAR VOLUME (ac-ft)	25-YEAR VELOCITY (fps)	TYPE OF FLOW
CP01	66.1	11.1	2.32	RUNOFF
CP02	15.4	1.9	2.46	RUNOFF
CP03	5.4	0.6	1.00	RUNOFF
CP04	479.2	97.6	19.50	RUNOFF
CP05	96.9	12.1	2.05	RUNOFF
CP06	112.7	18.0	1.43	RUNOFF
CP07	161.0	61.3	9.32	RUNOFF
CP08	6.7	0.7	1.77	RUNOFF
CP09	15.7	1.8	8.66	RUNOFF
CP10	358.4	91.5	17.45	RUNOFF
CP11	254.4	75.3	2.82	RUNON
CP12	213.2	62.9	4.57	RUNOFF
CP13	4.2	0.4	3.00	RUNON
CP14	4.2	0.4	2.83	RUNON
CP15	45.2	11.3	2.88	RUNON
CP16	129.4	11.4	13.33	RUNON
CP17	113.0	9.5	9.60	RUNOFF
CP18	124.8	32.4	4.88	RUNOFF
CP19	14.6	1.7	3.36	RUNOFF
CP19a	25.5	3.8	4.11	RUNOFF
CP20	23.2	3.4	1.77	RUNOFF
CP21	2.7	0.3	1.32	RUNOFF
CP22	29.6	4.4	1.09	RUNOFF
CP23	15.1	1.8	4.44	RUNOFF
CP24	18.6	2.3	6.00	RUNOFF
CP25	41.3	6.1	7.96	RUNOFF
CP26	5.1	0.7	2.44	RUNOFF
CP27	0.0	0.0	0.0	RUNOFF
OTHER COMPARISON POINTS				
FA	323.5	37.8		RUNOFF
OH75.1	68.3	11.9		RUNOFF
OH75.2	53.1	8.1		RUNOFF
OH75.3	24.0	2.1		RUNOFF



LEGEND

- PERMIT BOUNDARY
- LANDFILL FOOTPRINT
- 460 EXISTING 10' GROUND CONTOUR
- 500 LANDFILL 10' CONTOUR
- DRAINAGE AREA BOUNDARY
- CA01 DRAINAGE AREA DESIGNATION
- COMPARISON POINT—POINT DISCHARGE
- ↓ ↓ ↓ COMPARISON POINT—SHEET FLOW (NON-POINT DISCHARGE)
- OTHER COMPARISON POINT

- NOTES:**
- EXISTING CONTOURS COMPILED BY AEROMETRIC FROM AERIAL SURVEY FLOWN MARCH 6, 2011. COORDINATE SYSTEM IS BASED ON TEXAS STATE PLANE NAD 27, TEXAS NORTH CENTRAL.
 - CONTOURS WITHIN EXISTING LANDFILL FOOTPRINT DEPICT CURRENT PERMITTED FINAL CONTOURS.
 - DRAINAGE AREA BOUNDARY NOT SHOWN WHERE COINCIDENTAL WITH PERMIT BOUNDARY.
 - DRAINAGE AREAS CONTRIBUTING TO EACH COMPARISON POINT ARE LISTED ON THE TABLE ON PAGE C1-7.

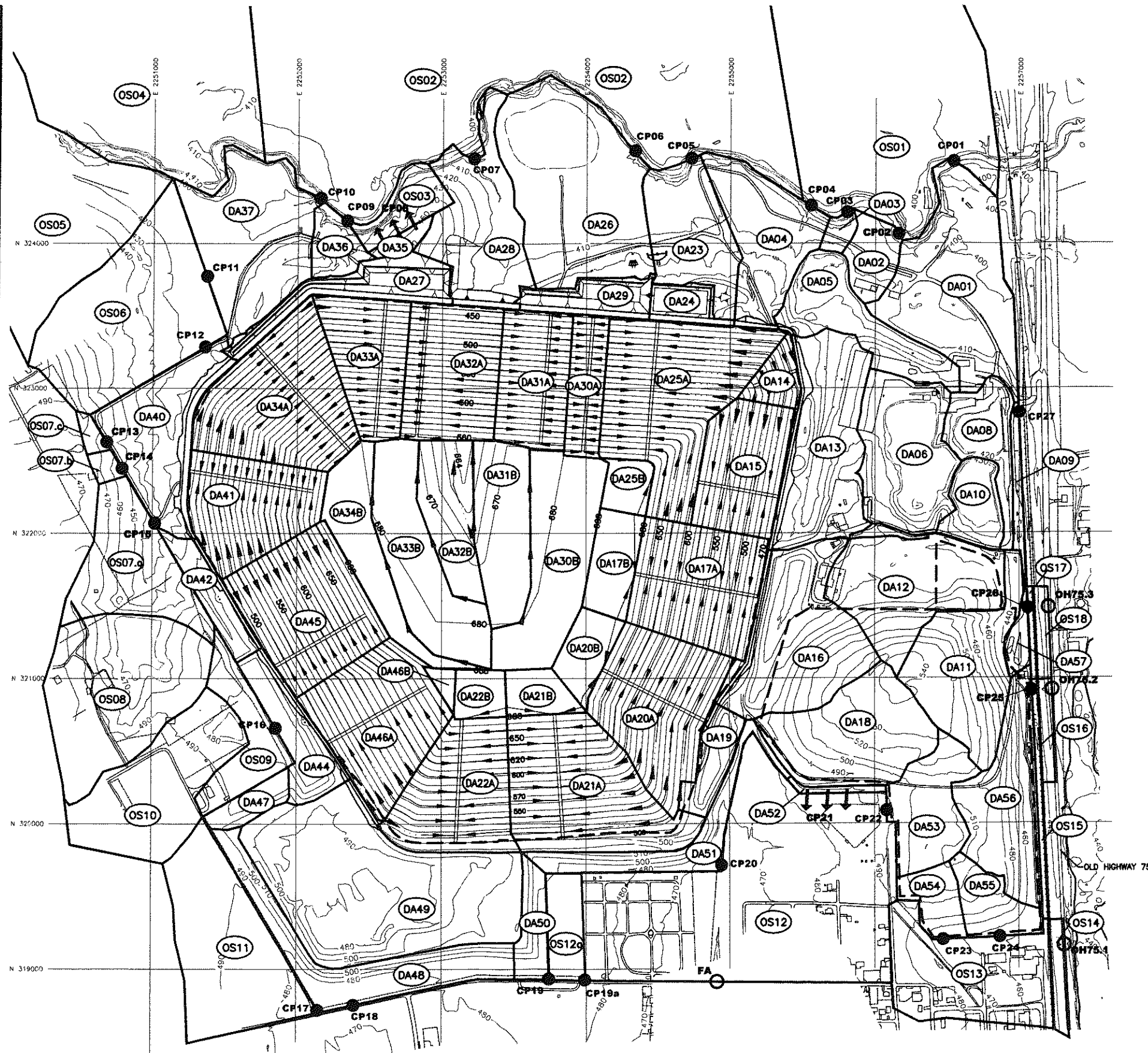


CURRENT PERMITTED BOUNDARY ANALYSIS SUMMARY
WASTE MANAGEMENT OF TEXAS, INC.
SKYLINE LANDFILL
MAJOR PERMIT AMENDMENT

BIGGS & MATHEWS
 ENVIRONMENTAL
 CONSULTING ENGINEERS
 MANSFIELD
 DALLAS • WICHITA FALLS
 817-563-1144

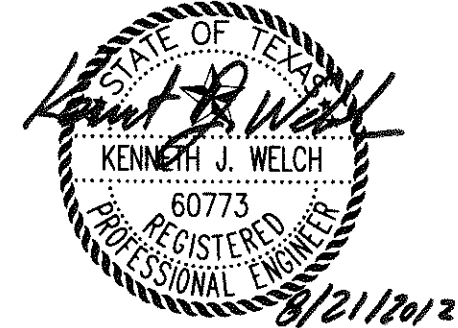
ISSUED FOR PERMITTING PURPOSES ONLY						TBPE FIRM NO. F-256	TBPG FIRM NO. 50222
REVISIONS						DSN. FAW	DATE : 04/12
1	08/12	NOD NO. 1 RESPONSE	BBB	FAW	FAW	KJW	DRAWING
REV	DATE	DESCRIPTION	DWN BY	DES BY	CHK BY	APP BY	C1-A-2
							DWN. BBB
							SCALE : GRAPHIC
							CHK. KJW
							DWG : C1_A_2.dwg

POSTDEVELOPED BOUNDARY ANALYSIS SUMMARY				
BOUNDARY COMPARISON POINT	25-YEAR FLOW RATE (cfs)	25-YEAR VOLUME (cc-ft)	25-YEAR VELOCITY (fps)	TYPE OF FLOW
CP01	66.1	11.1	2.32	RUNOFF
CP02	15.4	1.9	2.46	RUNOFF
CP03	5.4	0.6	1.00	RUNOFF
CP04	465.4	96.7	19.35	RUNOFF
CP05	93.7	20.1	2.02	RUNOFF
CP06	80.0	13.6	1.25	RUNOFF
CP07	204.6	71.9	9.90	RUNOFF
CP08	5.4	0.6	1.62	RUNOFF
CP09	15.0	1.6	8.53	RUNOFF
CP10	278.9	82.9	16.33	RUNOFF
CP11	249.2	74.1	2.79	RUNON
CP12	187.6	61.7	4.39	RUNOFF
CP13	4.2	0.4	3.00	RUNON
CP14	4.2	0.4	2.83	RUNON
CP15	45.2	11.3	2.88	RUNON
CP16	129.3	11.4	13.33	RUNON
CP17	113.0	9.5	9.60	RUNOFF
CP18	124.8	32.4	4.88	RUNOFF
CP19	14.6	1.7	3.36	RUNOFF
CP19a	25.5	3.8	4.11	RUNOFF
CP20	23.2	3.4	1.77	RUNOFF
CP21	2.7	0.3	1.32	RUNOFF
CP22	29.6	5.8	1.09	RUNOFF
CP23	15.1	1.8	4.44	RUNOFF
CP24	18.6	2.3	6.00	RUNOFF
CP25	41.3	5.1	7.96	RUNOFF
CP26	5.1	0.7	2.44	RUNOFF
CP27	0.0	0.0	0.0	RUNOFF
OTHER COMPARISON POINTS				
FA	323.5	37.8		RUNOFF
OH75.1	68.3	11.9		RUNOFF
OH75.2	53.1	8.1		RUNOFF
OH75.3	24.0	2.1		RUNOFF

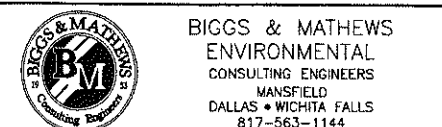


- LEGEND**
- PERMIT BOUNDARY
 - - - LANDFILL FOOTPRINT
 - 460 EXISTING 10' GROUND CONTOUR
 - 500 PROPOSED 10' FINAL COVER CONTOUR
 - DRAINAGE AREA BOUNDARY
 - - - DRAINAGE AREA REACH
 - DA1B DRAINAGE AREA DESIGNATION
 - COMPARISON POINT-POINT DISCHARGE
 - ↓ ↓ ↓ COMPARISON POINT-SHEET FLOW (NON-POINT DISCHARGE)
 - OTHER COMPARISON POINT

- NOTES:**
- EXISTING CONTOURS COMPILED BY AEROMETRIC FROM AERIAL PHOTOGRAPHY. FLOWN MARCH 6, 2011. COORDINATE SYSTEM IS BASED ON TEXAS STATE PLANE NAD 27, TEXAS NORTH CENTRAL ZONE, US FEET.
 - CONTOURS WITHIN THE LANDFILL FOOTPRINT DEPICT POSTDEVELOPED FINAL CONTOURS.
 - DRAINAGE AREA BOUNDARY NOT SHOWN WHERE COINCIDENTAL WITH PERMIT BOUNDARY.
 - DRAINAGE AREAS CONTRIBUTING TO EACH COMPARISON POINT ARE LISTED ON THE TABLE ON PAGE C1-12.



POSTDEVELOPED BOUNDARY ANALYSIS SUMMARY
WASTE MANAGEMENT OF TEXAS, INC.
SKYLINE LANDFILL
MAJOR PERMIT AMENDMENT



ISSUED FOR PERMITTING PURPOSES ONLY

REVISIONS						TBPE FIRM NO. F-256	TBPG FIRM NO. 50222
1	08/12	NOD NO.1 RESPONSE	BBB	FAW	FAW	KSJ	DSN. FAW
REV	DATE	DESCRIPTION	DWN BY	DES BY	CHK BY	APP BY	DATE : 04/12
							DWN. BBB
							SCALE : GRAPHIC
							CHK. KSJ
							DWG : C1_A_3.dwg
							DRAWING
							C1-A-3

j:\101\01\120\ATT\C1_A_3.dwg Layout: Layout1 User: bboles

Waste Management of Texas, Inc.
Skyline Landfill
HEC HMS Boundary Analysis Summary

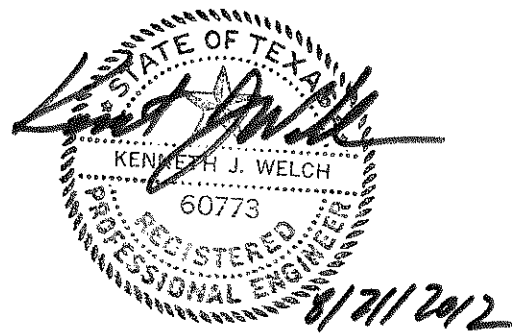
Boundary	Comparison Point	Total Contributing Drainage Area (ac)			25-Year Flow Rate (cfs)			25-Year Volume (ac-ft)			25-Year Velocity (fps)						
		Current	Post-Developed	Difference	Percent	Current	Post-Developed	Difference	Percent	Current	Post-Developed	Difference	Percent				
	CP01	21.7	21.7	0.0	0%	66.1	66.1	0.0	0%	11.1	11.1	0.0	0%	2.32	2.32	0.00	0%
	CP02	4.0	4.0	0.0	0%	15.4	15.4	0.0	0%	1.9	1.9	0.0	0%	2.46	2.46	0.00	0%
	CP03	1.2	1.2	0.0	0%	5.4	5.4	0.0	0%	0.6	0.6	0.0	0%	1.00	1.00	0.00	0%
	CP04	236.6	235.0	-1.7	-1%	479.2	465.4	-13.8	-3%	97.6	96.7	-0.9	-1%	19.50	19.35	-0.15	-1%
	CP05	35.6	40.3	4.7	13%	96.9	93.7	-3.2	-3%	12.1	20.1	8.0	66%	2.05	2.02	-0.03	-1%
	CP06	35.3	26.6	-8.7	-25%	112.7	80.0	-32.7	-29%	18.0	13.6	-4.4	-24%	1.43	1.25	-0.18	-13%
	CP07	120.9	143.9	23.0	19%	161.0	204.6	43.6	27%	61.3	71.9	10.6	17%	9.32	9.90	0.58	6%
	CP08	1.5	1.2	-0.3	-21%	6.7	5.4	-1.3	-19%	0.7	0.6	-0.1	-14%	1.77	1.62	-0.15	-8%
	CP09	3.8	3.3	-0.5	-13%	15.7	15.0	-0.7	-4%	1.8	1.6	-0.2	-11%	8.66	8.53	-0.13	-2%
	CP10	198.5	181.7	-16.8	-8%	358.4	278.9	-79.5	-22%	91.5	82.9	-8.6	-9%	17.45	16.33	-1.12	-6%
	CP11	165.9	163.4	-2.5	-2%	254.4	249.2	-5.2	-2%	75.3	74.1	-1.2	-2%	2.82	2.79	-0.03	-1%
	CP12	140.1	137.6	-2.5	-2%	213.2	187.6	-25.6	-12%	62.9	61.7	-1.2	-2%	4.57	4.39	-0.18	-4%
	CP13	0.9	0.9	0.0	0%	4.2	4.2	0.0	0%	0.4	0.4	0.0	0%	3.00	3.00	0.00	0%
	CP14	0.9	0.9	0.0	0%	4.2	4.2	0.0	0%	0.4	0.4	0.0	0%	2.83	2.83	0.00	0%
	CP15	35.9	35.9	0.0	0%	45.2	45.2	0.0	0%	11.3	11.3	0.0	0%	2.88	2.88	0.00	0%
	CP16	24.2	24.2	0.0	0%	129.4	129.3	-0.1	0%	11.4	11.4	0.0	0%	13.33	13.33	0.00	0%
	CP17	19.7	19.7	0.0	0%	113.0	113.0	0.0	0%	9.5	9.5	0.0	0%	9.60	9.60	0.00	0%
	CP18	67.1	67.1	0.0	0%	124.8	124.8	0.0	0%	32.4	32.4	0.0	0%	4.88	4.88	0.00	0%
	CP19	3.5	3.5	0.0	0%	14.6	14.6	0.0	0%	1.7	1.7	0.0	0%	3.36	3.36	0.00	0%
	CP19a	7.8	7.8	0.0	0%	25.5	25.5	0.0	0%	3.8	3.8	0.0	0%	4.11	4.11	0.00	0%
	CP20	7.1	7.1	0.0	0%	23.2	23.2	0.0	0%	3.4	3.4	0.0	0%	1.77	1.77	0.00	0%
	CP21	0.7	0.7	0.0	0%	2.7	2.7	0.0	0%	0.3	0.3	0.0	0%	1.32	1.32	0.00	0%
	CP22	9.0	9.0	0.0	0%	29.6	29.6	0.0	0%	4.4	4.4	0.0	0%	1.09	1.09	0.00	0%
	CP23	3.8	3.8	0.0	0%	15.1	15.1	0.0	0%	1.8	1.8	0.0	0%	4.44	4.44	0.00	0%
	CP24	4.8	4.8	0.0	0%	18.6	18.6	0.0	0%	2.3	2.3	0.0	0%	6.00	6.00	0.00	0%
	CP25	12.7	12.7	0.0	0%	41.3	41.3	0.0	0%	6.1	6.1	0.0	0%	7.96	7.96	0.00	0%
	CP26	1.5	1.5	0.0	0%	5.1	5.1	0.0	0%	0.7	0.7	0.0	0%	2.44	2.44	0.00	0%
	CP27	0.0	0.0	0.0	0%	0.0	0.0	0.0	0%	0.0	0.0	0.0	0%				
	FA	78.3	78.3	0.0	0%	323.5	323.5	0.0	0%	37.8	37.8	0.0	0%				
	OH75.1	26.6	26.6	0.0	0%	68.3	68.3	0	0%	11.9	11.9	0.0	0%				
	OH75.2	15.9	15.9	0.0	0%	53.1	53.1	0	0%	8.1	8.1	0.0	0%				
	OH75.3	3.6	3.6	0.0	0%	24.0	24.0	0.0	0%	2.1	2.1	0.0	0%				
Other Comparison Points																	

SKYLINE LANDFILL

ATTACHMENT C1

APPENDIX C1-B

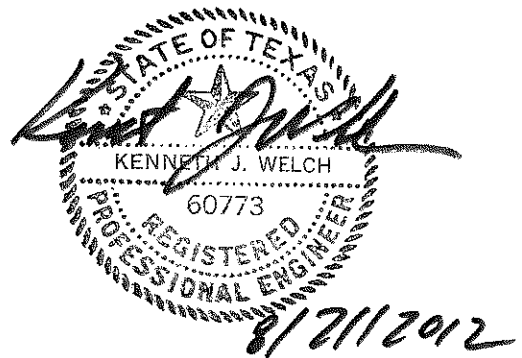
CURRENT PERMITTED HYDROLOGIC CALCULATIONS



Includes pages C1-B-1 through C1-B-144

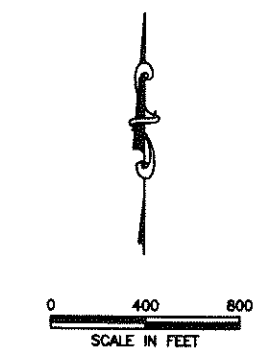
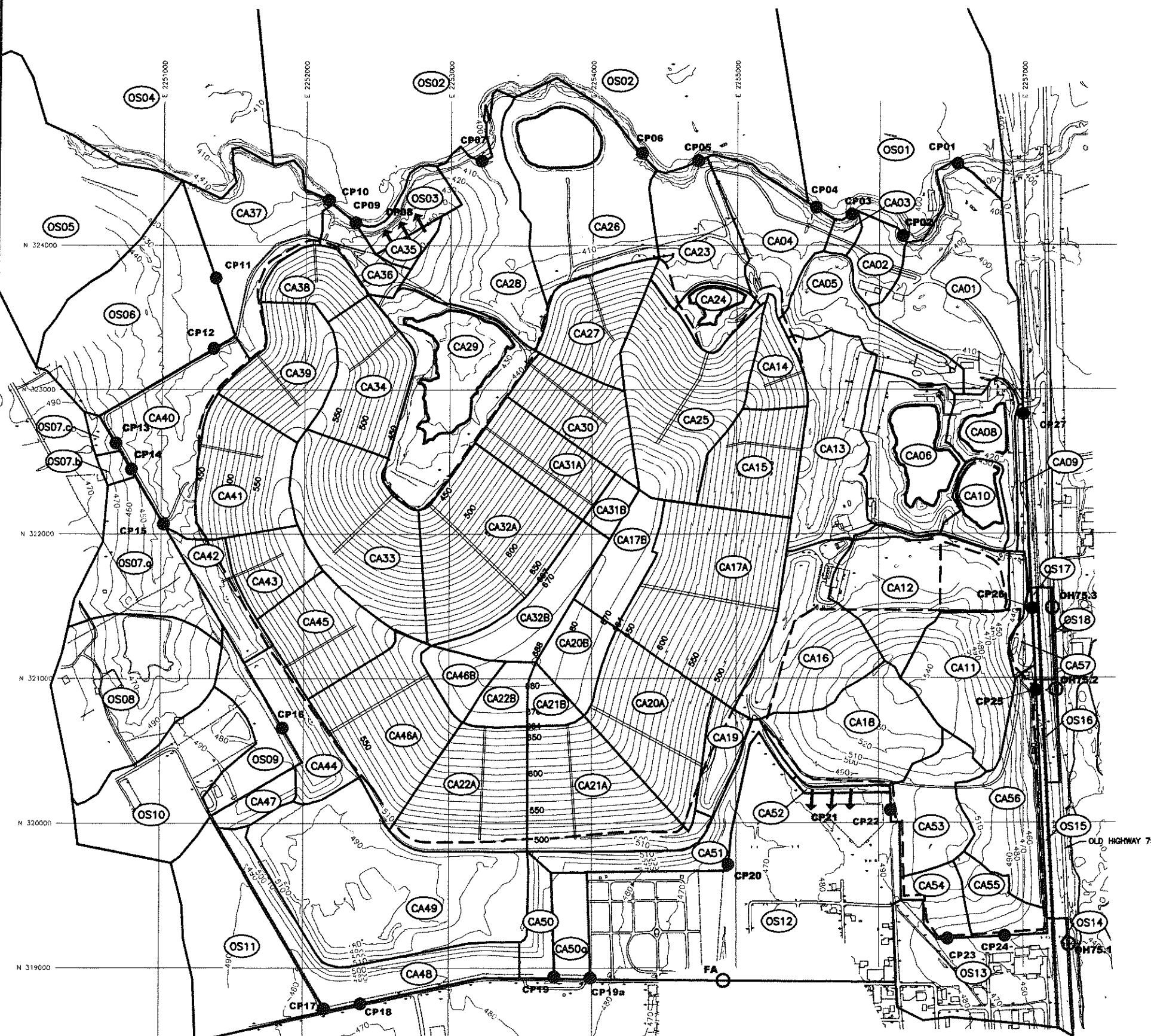
CONTENTS

Current Permitted Narrative	C1-B-1
Current Permitted Drainage Area Drawings	C1-B-6
Current Permitted Watershed Characteristics	C1-B-10
Rainfall Data	C1-B-18
Current Permitted Drainage Structure Design Parameters.....	C1-B-20
Ten Mile Creek Current Permitted HEC-HMS Schematic.....	C1-B-46
Ten Mile Creek Current Permitted Hydrologic Analysis 25-Year, 24-Hour Storm Event / 100-Year, 24-Hour Storm Event.....	C1-B-48
Southern Permit Boundary Current Permitted Hydrologic Analysis 25-Year, 24-Hour Storm Event.....	C1-B-121
Southeastern Permit Boundary Current Permitted Hydrologic Analysis 25-Year, 24-Hour Storm Event.....	C1-B-128
Current Permitted Flow Summary	C1-B-138
Current Permitted Velocity Summary	C1-B-141
Current Permitted Boundary Analysis Summary	C1-B-143



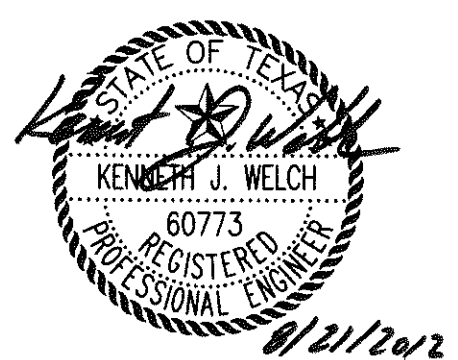
J:\101\01\120\ATT\C1_B_1.dwg Layout: Layout1 User: bboles

CURRENT PERMITTED DRAINAGE AREAS			
WATERSHED NAME	AREA (ac)	25-YEAR FLOW RATE (cfs)	25-YEAR VOLUME (ac-ft)
CA01	21.7	66.1	11.1
CA02	4.0	15.4	1.9
CA03	1.2	5.4	0.6
CA04	10.9	41.7	5.2
CA05	10.4	41.0	5.5
CA06	14.3	63.2	7.6
CA07	0.7	2.5	0.3
CA08	6.4	21.2	3.3
CA09	1.7	5.3	0.8
CA10	4.7	23.5	2.6
CA11	14.5	49.8	7.0
CA12	16.4	61.3	7.9
CA13	15.9	50.9	7.7
CA14	4.8	22.5	2.5
CA15	10.0	44.6	5.1
CA16	18.0	58.8	7.7
CA17.A	25.4	111.4	13.0
CA17.B	6.4	21.8	3.1
CA18	15.4	51.4	7.4
CA19	4.0	14.1	1.9
CA20.A	15.3	64.1	7.8
CA20.B	5.4	16.7	2.6
CA21.A	17.4	77.9	8.9
CA21.B	2.4	8.7	1.2
CA22.A	14.8	66.9	7.6
CA22.B	3.4	12.2	1.7
CA23	11.1	39.9	5.3
CA24	4.0	17.6	2.1
CA25	20.5	83.5	10.5
CA26	25.3	75.2	12.9
CA27	10.0	45.6	5.1
CA28	19.0	60.4	9.2
CA29	21.1	82.3	11.0
CA30	9.1	40.8	4.6
CA31.A	8.4	39.0	4.3
CA31.B	1.9	7.9	0.9
CA32.A	21.9	91.7	11.2
CA32.B	8.4	24.4	4.1
CA33	19.6	76.4	10.0
CA34	11.5	49.1	5.9
CA35	1.5	6.8	0.7
CA36	3.8	15.7	1.8
CA37	16.0	45.3	7.7
CA38	5.5	24.9	2.8
CA39	11.1	50.6	5.7
CA40	14.0	39.7	6.8
CA41	12.4	51.1	6.4
CA42	5.3	19.3	2.6
CA43	6.2	27.9	3.2
CA44	7.3	17.7	3.8
CA45	10.4	47.6	5.3
CA46.A	16.4	70.8	8.4
CA46.B	3.6	12.3	1.8
CA47	2.6	9.4	1.3
CA48	12.6	37.4	6.1
CA49	34.8	102.9	16.8
CA50	3.5	14.6	1.7
CA50a	4.3	13.0	2.1
CA51	7.1	23.2	3.4
CA52	0.7	2.7	0.3
CA53	9.0	29.6	4.4
CA54	3.8	15.1	1.8
CA55	4.8	18.6	2.3
CA56	12.7	41.3	6.1
CA57	1.5	5.1	0.7
OS01	420.4	1342.2	202.8
OS02	354.2	1067.8	167.4
OS03	4.2	11.5	2.0
OS04	398.3	1153.3	187.4
OS05	29.7	146.7	13.5
OS06	25.8	154.7	12.4
OS07.A	13.2	45.2	6.4
OS07.B	0.9	4.2	0.4
OS07.C	0.9	4.2	0.4
OS08	22.7	139.6	11.4
OS09	7.1	45.8	3.4
OS10	17.1	101.9	8.2
OS11	19.7	113.0	9.5
OS12	53.7	273.2	25.9
OS13	16.2	97.2	7.8
OS14	1.8	5.9	0.9
OS15	1.6	4.8	0.8
OS16	1.6	5.6	0.8
OS17	0.6	2.2	0.3
OS18	1.5	5.2	2.1



- LEGEND**
- PERMIT BOUNDARY
 - PROPERTY BOUNDARY
 - LANDFILL FOOTPRINT
 - 460 EXISTING 10' GROUND CONTOUR
 - 500 LANDFILL 10' CONTOUR
 - DRAINAGE AREA BOUNDARY
 - CA01 DRAINAGE AREA DESIGNATION
 - COMPARISON POINT-POINT DISCHARGE
 - ↓ ↓ ↓ COMPARISON POINT-SHEET FLOW (NON-POINT DISCHARGE)
 - OTHER COMPARISON POINT

- NOTES:**
- EXISTING CONTOURS COMPILED BY AEROMETRIC FROM AERIAL SURVEY FLOWN MARCH 6, 2011. COORDINATE SYSTEM IS BASED ON TEXAS STATE PLANE NAD 27, TEXAS NORTH CENTRAL.
 - CONTOURS WITHIN EXISTING LANDFILL FOOTPRINT DEPICT CURRENT PERMITTED FINAL CONTOURS.
 - DRAINAGE AREA BOUNDARY NOT SHOWN WHERE COINCIDENTAL WITH PERMIT BOUNDARY.



CURRENT PERMITTED DRAINAGE AREA SUMMARY

WASTE MANAGEMENT OF TEXAS, INC.
SKYLINE LANDFILL
MAJOR PERMIT AMENDMENT

BIGGS & MATHEWS
 ENVIRONMENTAL
 CONSULTING ENGINEERS
 MANSFIELD FALLS
 DALLAS • WICHITA FALLS
 817-563-1144

ISSUED FOR PERMITTING PURPOSES ONLY

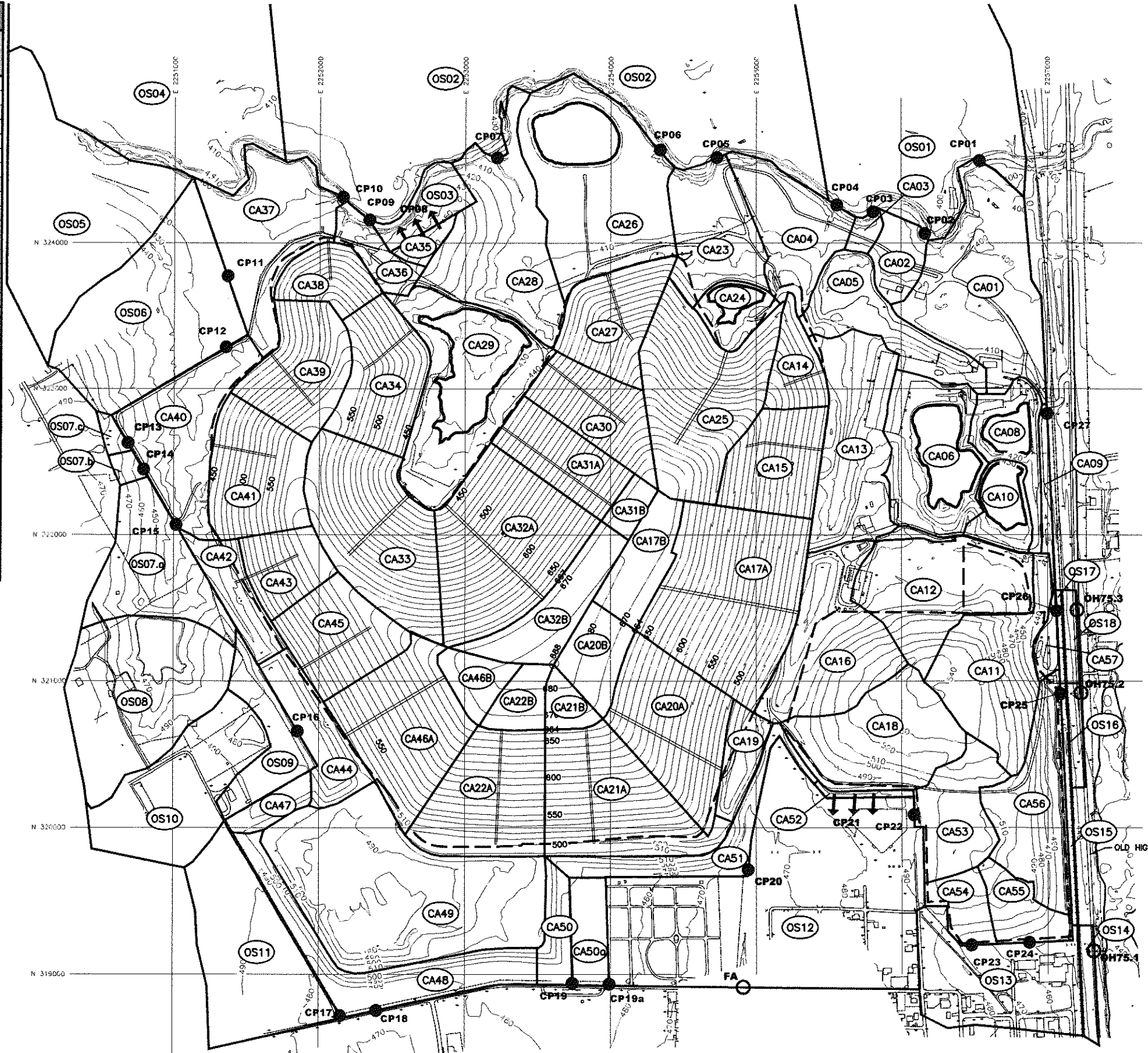
REVISIONS				DATE	DESCRIPTION	BY	APP
1	08/12	NOD NO. 1 RESPONSE	BBB	FAW	FAW	KJW	
REV	DATE	DESCRIPTION	OWN	DES	CHK	APP	BY

DSN.	FAW	DATE :	04/12	DRAWING
DWN.	BBB	SCALE :	GRAPHIC	C1-B-1
CHK.	KJW	DWG :	C1_B_1.dwg	

TBPE FIRM NO. F-256 TBPG FIRM NO. 50222

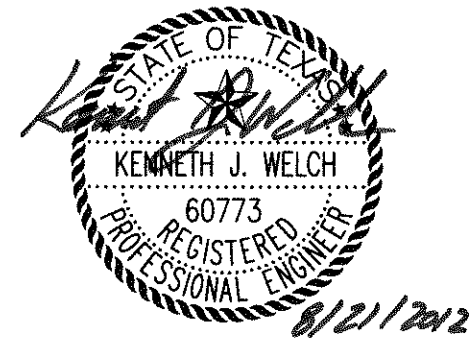
J:\101\01\120\ATT\C1_B_2.dwg Layout: Layout1 User: bboles

CURRENT PERMITTED BOUNDARY ANALYSIS SUMMARY				
BOUNDARY COMPARISON POINT	25-YEAR FLOW RATE (cfs)	25-YEAR VOLUME (ac-ft)	25-YEAR VELOCITY (fps)	TYPE OF FLOW
CP01	66.1	11.1	2.32	RUNOFF
CP02	15.4	1.9	2.46	RUNOFF
CP03	5.4	0.6	1.00	RUNOFF
CP04	479.2	97.6	19.50	RUNOFF
CP05	96.9	12.1	2.05	RUNOFF
CP06	112.7	18.0	1.43	RUNOFF
CP07	161.0	61.3	9.32	RUNOFF
CP08	6.7	0.7	1.77	RUNOFF
CP09	15.7	1.8	8.66	RUNOFF
CP10	358.4	91.5	17.45	RUNOFF
CP11	254.4	75.3	2.82	RUNOFF
CP12	213.2	62.9	4.57	RUNOFF
CP13	4.2	0.4	3.00	RUNOFF
CP14	4.2	0.4	2.83	RUNOFF
CP15	45.2	11.3	2.88	RUNOFF
CP16	129.4	11.4	13.33	RUNOFF
CP17	113.0	9.5	9.60	RUNOFF
CP18	124.8	32.4	4.88	RUNOFF
CP19	14.6	1.7	3.36	RUNOFF
CP19a	25.5	3.8	4.11	RUNOFF
CP20	23.2	3.4	1.77	RUNOFF
CP21	2.7	0.3	1.32	RUNOFF
CP22	29.6	4.4	1.09	RUNOFF
CP23	15.1	1.8	4.44	RUNOFF
CP24	18.6	2.3	6.00	RUNOFF
CP25	41.3	6.1	7.96	RUNOFF
CP26	5.1	0.7	2.44	RUNOFF
CP27	0.0	0.0	0.00	RUNOFF
OTHER COMPARISON POINTS				
FA	323.5	37.8		RUNOFF
OH75.1	68.3	11.9		RUNOFF
OH75.2	53.1	8.1		RUNOFF
OH75.3	24.0	2.1		RUNOFF



- LEGEND**
- PERMIT BOUNDARY
 - LANDFILL FOOTPRINT
 - 460 EXISTING 10' GROUND CONTOUR
 - 500 LANDFILL 10' CONTOUR
 - DRAINAGE AREA BOUNDARY
 - CA01 DRAINAGE AREA DESIGNATION
 - COMPARISON POINT-POINT DISCHARGE
 - ↓ ↓ ↓ COMPARISON POINT-SHEET FLOW (NON-POINT DISCHARGE)
 - OTHER COMPARISON POINT

- NOTES:**
- EXISTING CONTOURS COMPILED BY AEROMETRIC FROM AERIAL PHOTOGRAPHY, FLOWN MARCH 6, 2011. COORDINATE SYSTEM IS BASED ON TEXAS STATE PLANE NAD 27, TEXAS NORTH CENTRAL ZONE, US FEET.
 - CONTOURS WITHIN EXISTING LANDFILL FOOTPRINT DEPICT CURRENT PERMITTED FINAL CONTOURS.
 - DRAINAGE AREA BOUNDARY NOT SHOWN WHERE COINCIDENTAL WITH PERMIT BOUNDARY.
 - DRAINAGE AREAS CONTRIBUTING TO EACH COMPARISON POINT ARE LISTED ON THE TABLE ON PAGE C1-7.



CURRENT PERMITTED BOUNDARY ANALYSIS SUMMARY
WASTE MANAGEMENT OF TEXAS, INC.
SKYLINE LANDFILL
MAJOR PERMIT AMENDMENT

BIGGS & MATHEWS
ENVIRONMENTAL CONSULTING ENGINEERS
 MANSFIELD
 DALLAS • WICHITA FALLS
 817-563-1144

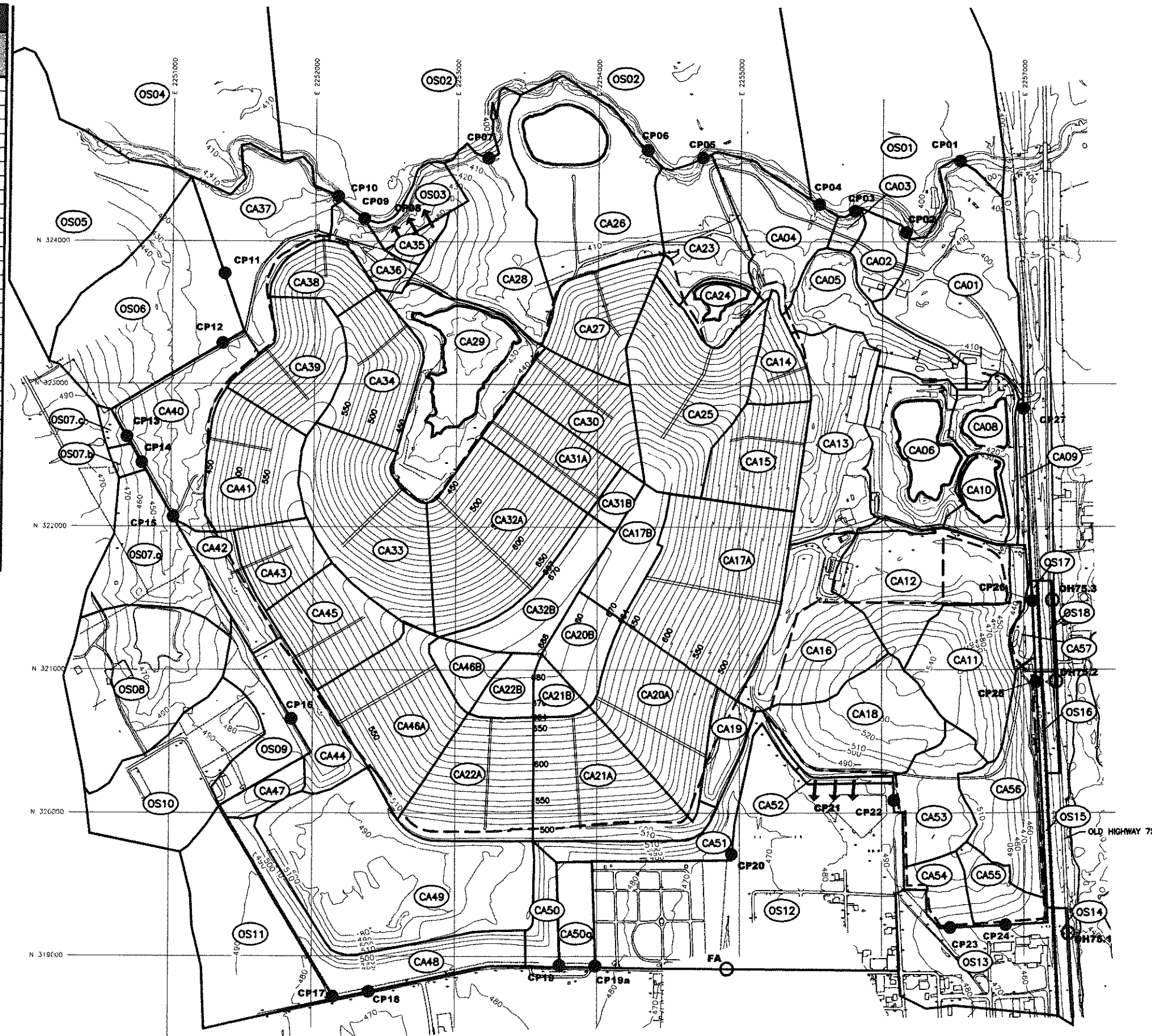
ISSUED FOR PERMITTING PURPOSES ONLY

REVISIONS						TBPE FIRM NO. F-256	TBPG FIRM NO. 50222
1	08/12	NOD NO. 1 RESPONSE	BBB	FAW	FAW	KJW	DSN. FAW DATE: 04/12
REV	DATE	DESCRIPTION	DWN BY	DES BY	CHK BY	APP BY	DWN. BBB SCALE: GRAPHIC
							CHK. KJW DWG: C1_B_2.dwg

C1-B-2

C1-B-8

BOUNDARY COMPARISON POINT	25-YEAR FLOW RATE (cfs)	25-YEAR VOLUME (ac-ft)	25-YEAR VELOCITY (ft/s)	TYPE OF FLOW
CP01	66.1	11.1	2.32	RUNOFF
CP02	15.4	1.9	2.46	RUNOFF
CP03	5.4	0.6	1.00	RUNOFF
CP04	479.2	97.6	19.50	RUNOFF
CP05	96.9	12.1	2.05	RUNOFF
CP06	112.7	18.0	1.43	RUNOFF
CP07	161.0	61.3	9.32	RUNOFF
CP08	6.7	0.7	1.77	RUNOFF
CP09	15.7	1.8	8.66	RUNOFF
CP10	358.4	91.5	17.45	RUNOFF
CP11	254.4	75.3	2.82	RUNOFF
CP12	213.2	62.9	4.57	RUNOFF
CP13	4.2	0.4	3.00	RUNOFF
CP14	4.2	0.4	2.83	RUNOFF
CP15	45.2	11.3	2.88	RUNOFF
CP16	129.4	11.4	13.33	RUNOFF
CP17	113.0	9.5	9.60	RUNOFF
CP18	124.8	32.4	4.88	RUNOFF
CP19	14.6	1.7	3.36	RUNOFF
CP19a	25.5	3.8	4.11	RUNOFF
CP20	23.2	3.4	1.77	RUNOFF
CP21	2.7	0.3	1.32	RUNOFF
CP22	29.6	4.4	1.09	RUNOFF
CP23	15.1	1.8	4.44	RUNOFF
CP24	18.6	2.3	6.00	RUNOFF
CP25	41.3	6.1	7.96	RUNOFF
CP26	5.1	0.7	2.44	RUNOFF
CP27	0.0	0.0	0.00	RUNOFF
OTHER COMPARISON POINTS				
FA	323.5	37.8		RUNOFF
DH75.1	68.3	11.9		RUNOFF
DH75.2	53.1	8.1		RUNOFF
DH75.3	24.0	2.1		RUNOFF



0 400 800
SCALE IN FEET

LEGEND

- PERMIT BOUNDARY
- - - LANDFILL FOOTPRINT
- 460 EXISTING 10' GROUND CONTOUR
- 500 LANDFILL 10' CONTOUR
- DRAINAGE AREA BOUNDARY
- CA01 DRAINAGE AREA DESIGNATION
- COMPARISON POINT-POINT DISCHARGE
- ↓ ↓ ↓ COMPARISON POINT-SHEET FLOW (NON-POINT DISCHARGE)
- OTHER COMPARISON POINT

- NOTES:**
- EXISTING CONTOURS COMPILED BY AEROMETRIC FROM AERIAL PHOTOGRAPHY, FLOWN MARCH 6, 2011. COORDINATE SYSTEM IS BASED ON TEXAS STATE PLANE NAD 27, TEXAS NORTH CENTRAL ZONE, US FEET.
 - CONTOURS WITHIN EXISTING LANDFILL FOOTPRINT DEPICT CURRENT PERMITTED FINAL CONTOURS.
 - DRAINAGE AREA BOUNDARY NOT SHOWN WHERE COINCIDENTAL WITH PERMIT BOUNDARY.
 - DRAINAGE AREAS CONTRIBUTING TO EACH COMPARISON POINT ARE LISTED ON THE TABLE ON PAGE C1-7.



CURRENT PERMITTED BOUNDARY ANALYSIS SUMMARY
WASTE MANAGEMENT OF TEXAS, INC.
SKYLINE LANDFILL
MAJOR PERMIT AMENDMENT

BIGGS & MATHEWS
 ENVIRONMENTAL CONSULTING ENGINEERS
 MANSFIELD DALLAS • WICHITA FALLS
 817-563-1144

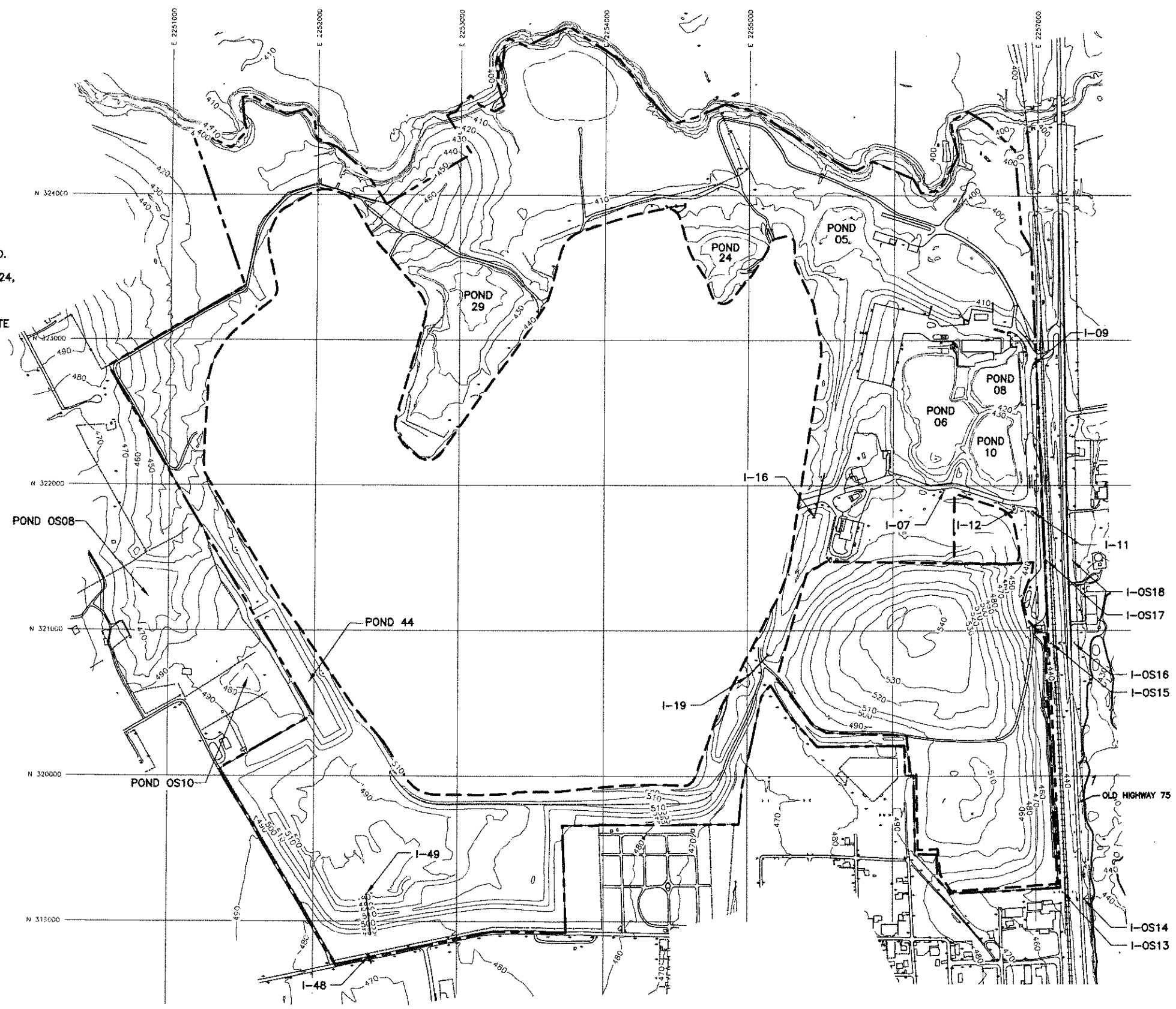
ISSUED FOR PERMITTING PURPOSES ONLY

REVISIONS						TBPE FIRM NO. F-256		TBPE FIRM NO. 50222	
1	08/12	NOD NO. 1 RESPONSE	BBB	FAW	KJW	DSN.	FAW	DATE :	04/12
REV	DATE	DESCRIPTION	DWN BY	DES BY	CHK BY	APP BY	CHK.	SCALE :	GRAPHIC
								DWG :	C1_B_2.dwg

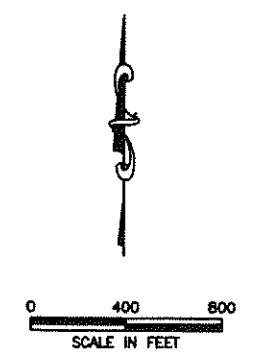
DRAWING **C1-B-2**

J:\101\01\120\ATT C\C1_B_2.dwg Layout: Layout1 User: bbolas

J:\101\01\120\ATT C\CI_B_4.dwg Layout: Layout1 User: bboles



- DRAINAGE STRUCTURE NOTES:**
1. POND 44 IS AN EXISTING ONSITE DETENTION POND.
 2. POND 05, POND 06, POND 08, POND 10, POND 24, AND POND 29 ARE EXISTING ONSITE RETENTION PONDS.
 3. POND OS08 AND POND OS10 ARE EXISTING OFFSITE RETENTION PONDS.
 4. I-16 AND I-19 ARE EXISTING DRAINAGE CONTROL STRUCTURES WITHIN THE EAST DITCH.
 5. I-07, I-09, I-11, I-12, I-48, AND I-49 ARE EXISTING ONSITE DRAINAGE CONTROL STRUCTURES.
 6. I-OS13, I-OS14, I-OS15, I-OS16, I-OS17, AND I-OS18 ARE EXISTING OFFSITE DRAINAGE CONTROL STRUCTURES WHICH RECEIVE STORMWATER RUNOFF FROM THE SKYLINE LANDFILL.



- LEGEND**
- PERMIT BOUNDARY
 - LANDFILL FOOTPRINT
 - 460' EXISTING 10' GROUND CONTOUR

- NOTES:**
1. EXISTING CONTOURS COMPILED BY AEROMETRIC FROM AERIAL PHOTOGRAPHY. FLOWN MARCH 6, 2011. COORDINATE SYSTEM IS BASED ON TEXAS STATE PLANE NAD 27, TEXAS NORTH CENTRAL ZONE, US FEET.



**CURRENT PERMITTED
DRAINAGE STRUCTURE LOCATION PLAN**

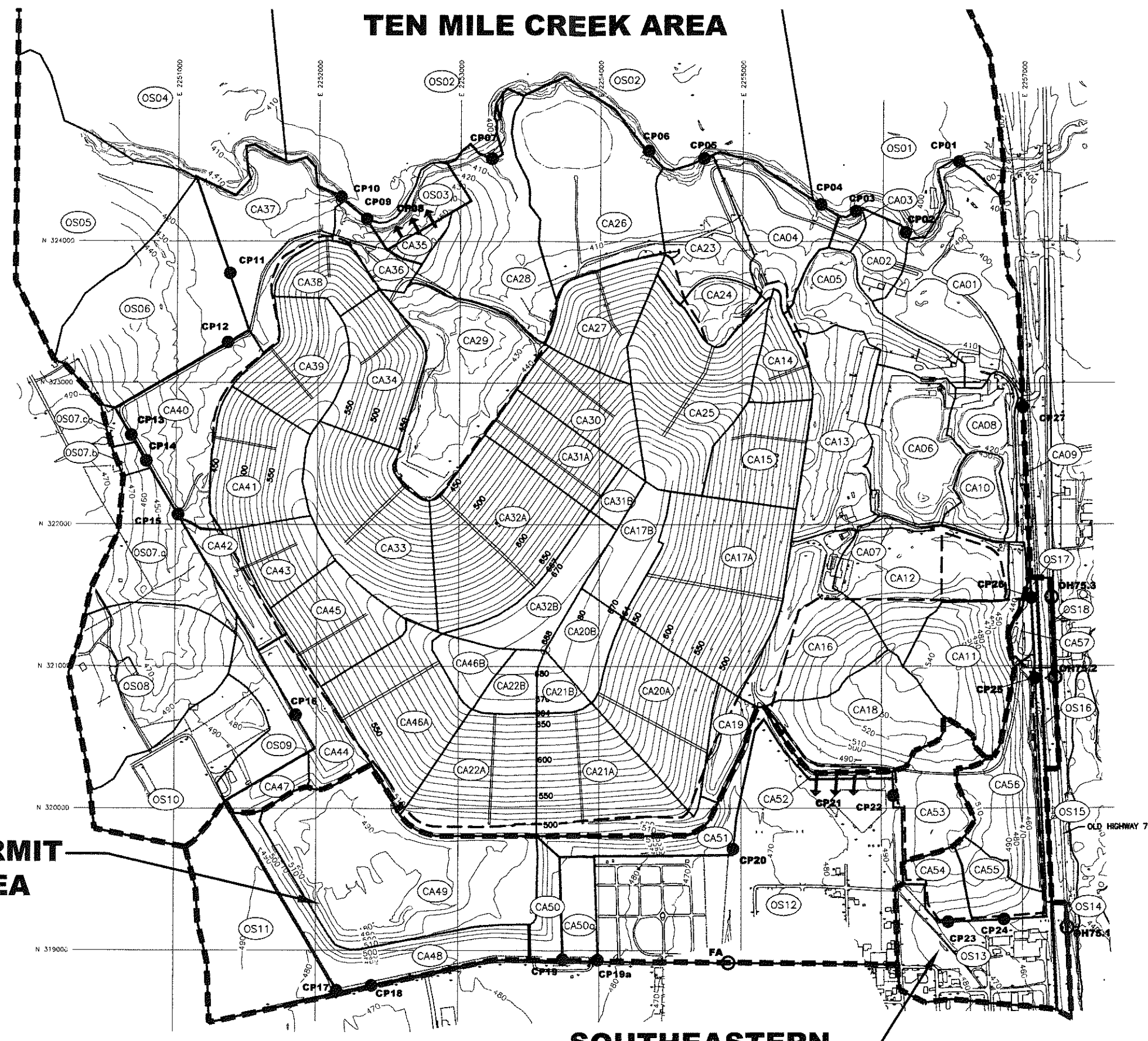
**WASTE MANAGEMENT OF TEXAS, INC.
SKYLINE LANDFILL
MAJOR PERMIT AMENDMENT**


BIGGS & MATHEWS
 ENVIRONMENTAL
 CONSULTING ENGINEERS
 MANSFIELD
 DALLAS • WICHITA FALLS
 817-563-1144

ISSUED FOR PERMITTING PURPOSES ONLY

REVISIONS							TBPE FIRM NO. F-256		TBPG FIRM NO. 50222	
1	08/12	NOD NO. 1 RESPONSE	BBB	FAW	FAW	KJW	DSN. FAW	DATE :	04/12	DRAWING C1-B-4
REV	DATE	DESCRIPTION	DWN BY	DES BY	CHK BY	APP BY	DWN. BBB	SCALE :	GRAPHIC	
							CHK. KJW	DWG :	C1_B_4.dwg	

TEN MILE CREEK AREA



- LEGEND**
- PERMIT BOUNDARY
 - PROPERTY BOUNDARY
 - LANDFILL FOOTPRINT
 - 460 EXISTING 10' GROUND CONTOUR
 - 500 LANDFILL 10' CONTOUR
 - DRAINAGE AREA BOUNDARY
 - MAJOR DRAINAGE DIVIDE BOUNDARY
 - CA01 DRAINAGE AREA DESIGNATION
 - COMPARISON POINT-POINT DISCHARGE
 - ↓ ↓ ↓ COMPARISON POINT-SHEET FLOW (NON-POINT DISCHARGE)
 - OTHER COMPARISON POINT

- NOTES:**
- EXISTING CONTOURS COMPILED BY AEROMETRIC FROM AERIAL SURVEY FLOWN MARCH 6, 2011. COORDINATE SYSTEM IS BASED ON TEXAS STATE PLANE NAD 27, TEXAS NORTH CENTRAL.

SOUTHERN PERMIT BOUNDARY AREA

SOUTHEASTERN PERMIT BOUNDARY AREA



CURRENT PERMITTED MAJOR DRAINAGE DIVIDES
WASTE MANAGEMENT OF TEXAS, INC.
SKYLINE LANDFILL
MAJOR PERMIT AMENDMENT



BIGGS & MATHEWS ENVIRONMENTAL CONSULTING ENGINEERS
 MANSFIELD
 DALLAS • WICHITA FALLS
 817-563-1144

ISSUED FOR PERMITTING PURPOSES ONLY

REVISIONS						TBPE FIRM NO. F-256	TBPG FIRM NO. 50222
1	08/12	NOD NO. 1 RESPONSE	BBB	FAW	FAW	DSN. FAW	DATE : 04/12
REV	DATE	DESCRIPTION	DWN BY	DES BY	CHK BY	APP BY	DWG : C1_B_5.dwg

DRAWING **C1-B-5**

J:\101\01\120\ATT_C1_B_5.dwg Layout: Layout1 User: bboles