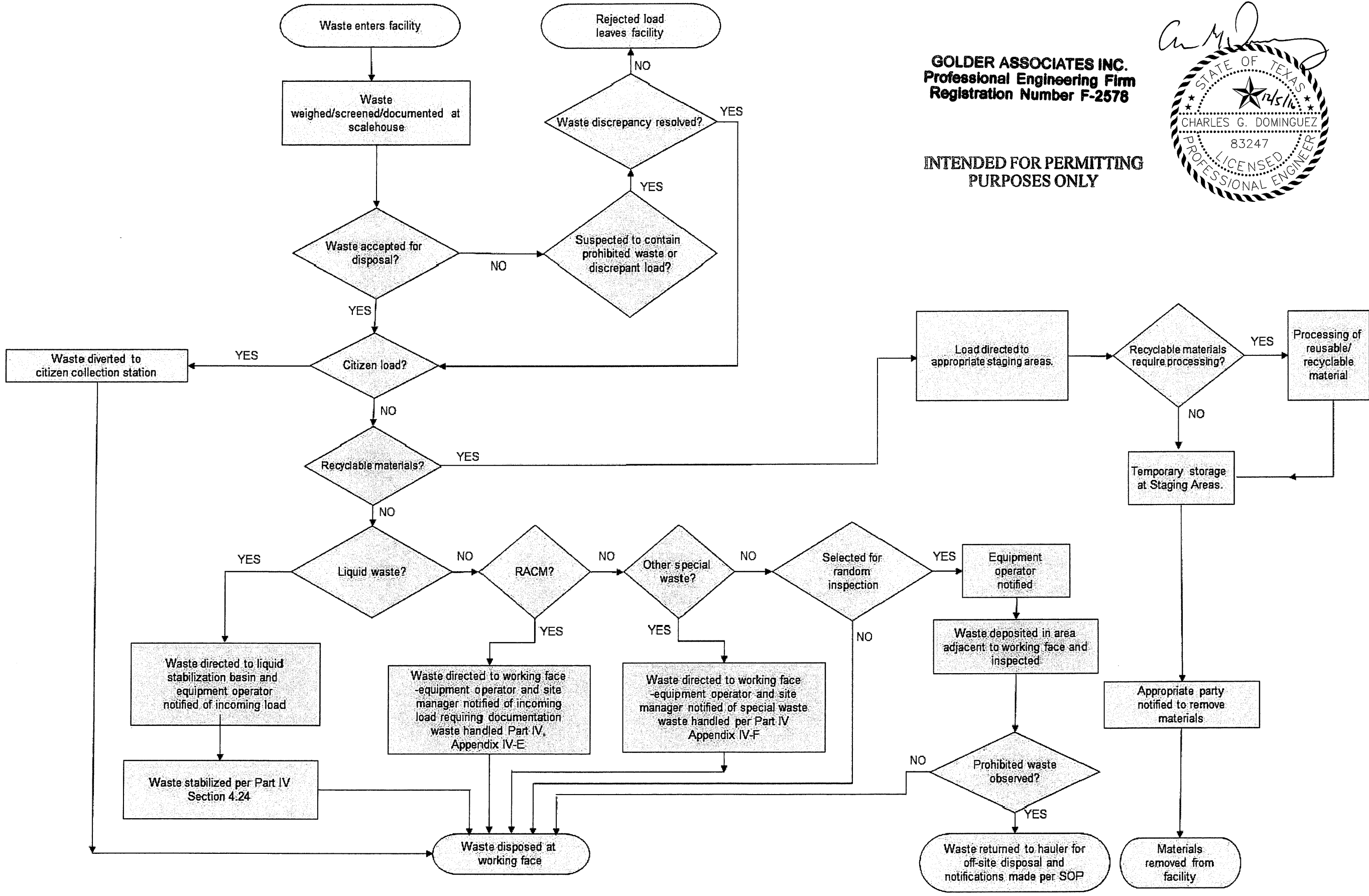


RESPONSE 31

Path: \\Houston\draffing\2014\1-1.dwg



GOLDER ASSOCIATES INC.
Professional Engineering Firm
Registration Number F-2578

INTENDED FOR PERMITTING PURPOSES ONLY



| | |
|---------------------|---------------------------------------|
| PROJECT | PERMIT AMENDMENT APPLICATION MSW 692B |
| CLIENT | CITY OF TEMPLE |
| TITLE | WASTE MOVEMENT FLOW DIAGRAM |
| PROJECT NO. | 1400336 |
| APPLICATION SECTION | III Attachment 1 |
| REV. | 0 |
| 1 of 2 | |
| FIGURE | III-1-1 |

| | | | | | |
|----------------|----------------------------------|--|--|--|--|
| HOUSTON | 500 CENTURY PLAZA DR., SUITE 190 | | | | |
| HOUSTON, TX | 77073 | | | | |
| USA | | | | | |
| (281) 821-8888 | | | | | |
| www.golder.com | | | | | |

| | | | | | | |
|------|-----------|------------|------------------------|-----|-----|-----|
| REV. | 1 | 2016-12 | RESPONSE TO 1ST NOD MX | TNB | MX | CGD |
| REV. | 0 | 2016-06-10 | INITIAL SUBMITTAL | MX | TNB | CGD |
| REV. | YYY-MM-DD | | DESCRIPTION | | | |

1" IF THIS MEASUREMENT DOES NOT MATCH WHAT IS SHOWN, THE SHEET SIZE HAS BEEN MODIFIED FROM ANSI B