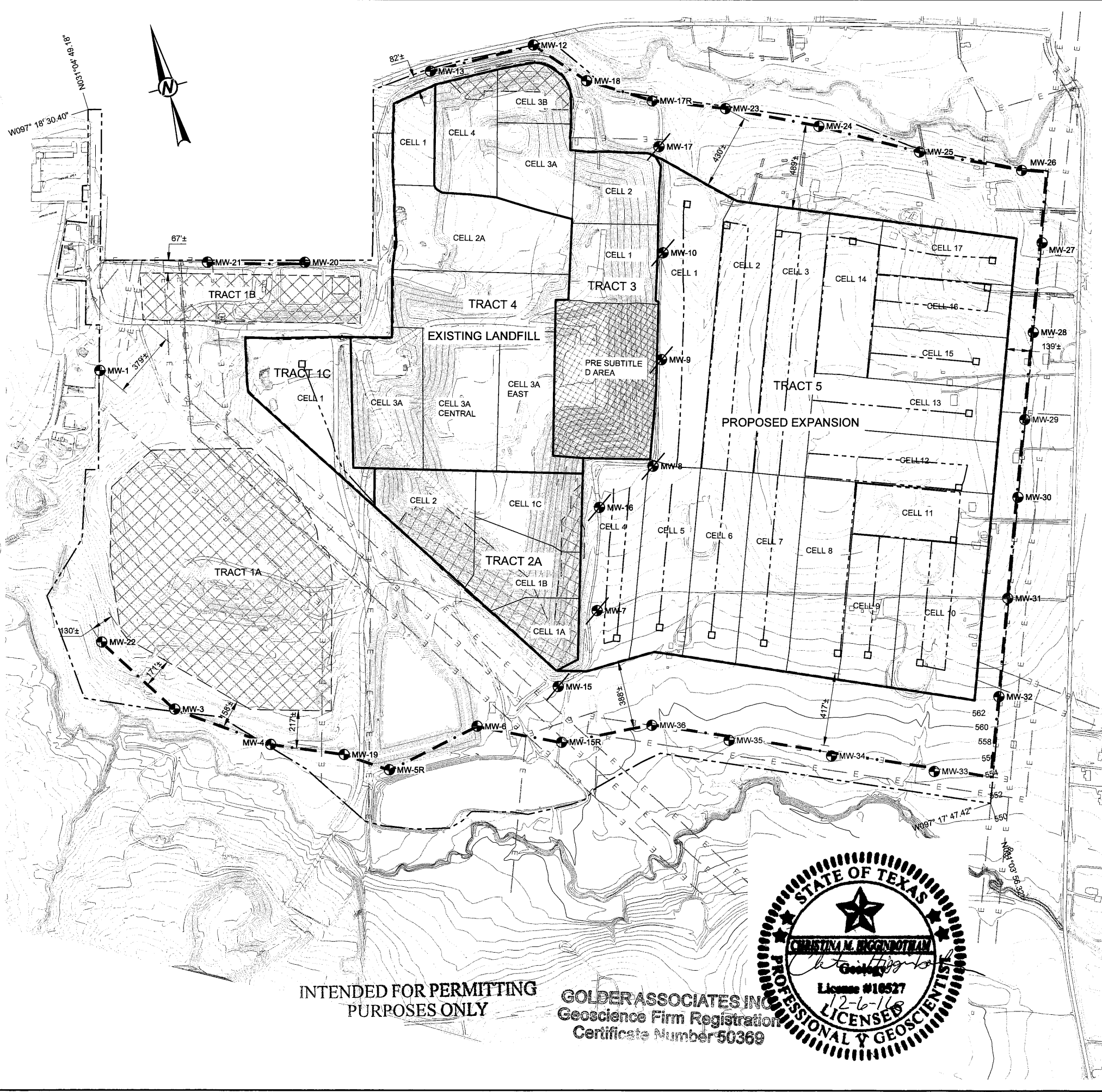


RESPONSE 61

Path: \\Houston\drilling_2014\ Temple\PRODUCTION_LA - PERMIT AMMENDMENT APPLICATION | File Name: 1400336048.dwg



LEGEND

- PERMIT BOUNDARY
- - - - - LIMITS OF WASTE
- . - . - . POINT OF COMPLIANCE
- 620--- EXISTING CONDITIONS CONTOUR
- CELL LAYOUT
- E - E - E - EASEMENTS
- - - - - CLOSED AREA OF LANDFILL
- LEACHATE COLLECTION SUMP AND PIPE
- ▣ AREAS WITH TCEQ APPROVED FINAL COVER

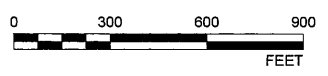
EXISTING PROPOSED

- MW-2 ● MW-1 MONITORING WELL
- ⊘ MW-2 MONITORING WELL TO BE ABANDONED

MONITORING WELL	INSTALL	ABANDONMENT
MW-7	Existing	ABANDON PRIOR TO TRACT 5 CELL 4 CONSTRUCTION
MW-8	Existing	ABANDON PRIOR TO TRACT 5 CELL 1 CONSTRUCTION
MW-9	Existing	ABANDON PRIOR TO TRACT 5 CELL 1 CONSTRUCTION
MW-10	Existing	ABANDON PRIOR TO TRACT 5 CELL 1 CONSTRUCTION
MW-15	Existing	ABANDON PRIOR TO TRACT 5 CELL 4 CONSTRUCTION
MW-15R	INSTALL PRIOR TO TRACT 5 CELL 1 CONSTRUCTION	-
MW-16	Existing	ABANDON PRIOR TO TRACT 5 CELL 4 CONSTRUCTION
MW-17	Existing	ABANDON PRIOR TO TRACT 5 CELL 1 CONSTRUCTION
MW-17R	INSTALL PRIOR TO TRACT 5 CELL 1 CONSTRUCTION	-
MW-23	INSTALL PRIOR TO TRACT 5 CELL 1 CONSTRUCTION	-
MW-24	INSTALL PRIOR TO TRACT 5 CELL 1 CONSTRUCTION	-
MW-25	INSTALL PRIOR TO TRACT 5 CELL 14 CONSTRUCTION	-
MW-26	INSTALL PRIOR TO TRACT 5 CELL 14 CONSTRUCTION	-
MW-27	INSTALL PRIOR TO TRACT 5 CELL 14 CONSTRUCTION	-
MW-28	INSTALL PRIOR TO TRACT 5 CELL 13 CONSTRUCTION	-
MW-29	INSTALL PRIOR TO TRACT 5 CELL 12 CONSTRUCTION	-
MW-30	INSTALL PRIOR TO TRACT 5 CELL 11 CONSTRUCTION	-
MW-31	INSTALL PRIOR TO TRACT 5 CELL 9 CONSTRUCTION	-
MW-32	INSTALL PRIOR TO TRACT 5 CELL 8 CONSTRUCTION	-
MW-33	INSTALL PRIOR TO TRACT 5 CELL 7 CONSTRUCTION	-
MW-34	INSTALL PRIOR TO TRACT 5 CELL 5 CONSTRUCTION	-
MW-35	INSTALL PRIOR TO TRACT 5 CELL 4 CONSTRUCTION	-
MW-36	INSTALL PRIOR TO TRACT 5 CELL 4 CONSTRUCTION	-

NOTES

1. TOPOGRAPHY COMPILED BY PHOTOGRAMMETRIC METHODS FROM AERIAL PHOTOGRAPHY DATED MARCH 6, 2015.



INTENDED FOR PERMITTING PURPOSES ONLY

GOLDER ASSOCIATES INC.
 Geoscience Firm Registration
 Certificate Number 50369



PROJECT: PERMIT AMMENDMENT APPLICATION MSW 692B
 TEMPLE RECYCLING AND DISPOSAL FACILITY
 BELL COUNTY, TEXAS

TITLE: PROPOSED GROUNDWATER MONITORING SYSTEM

PROJECT NO.: 1400336

REV. 0 11 of 12 FIGURE III-5-6

CLIENT: CITY OF TEMPLE

CONSULTANT: Golder Associates

HOUSTON 500 CENTURY PLAZA DR., SUITE 190 HOUSTON, TX 77073 USA (281) 821-8888 www.golder.com

1	2016-12	RESPONSE TO 1ST NOD MX	TNB	MX	CGD
0	2016-06-10	INITIAL SUBMITTAL	DMW	TNB	JAW CMH
REV.	YYYY-MM-DD	DESCRIPTION	DESIGNED	PREPARED	REVIEWED APPROVED