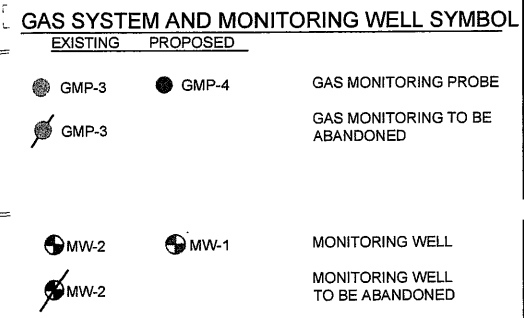
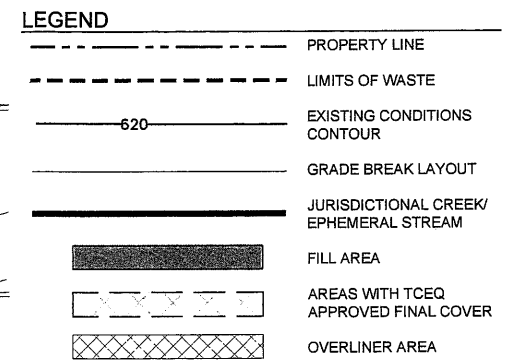
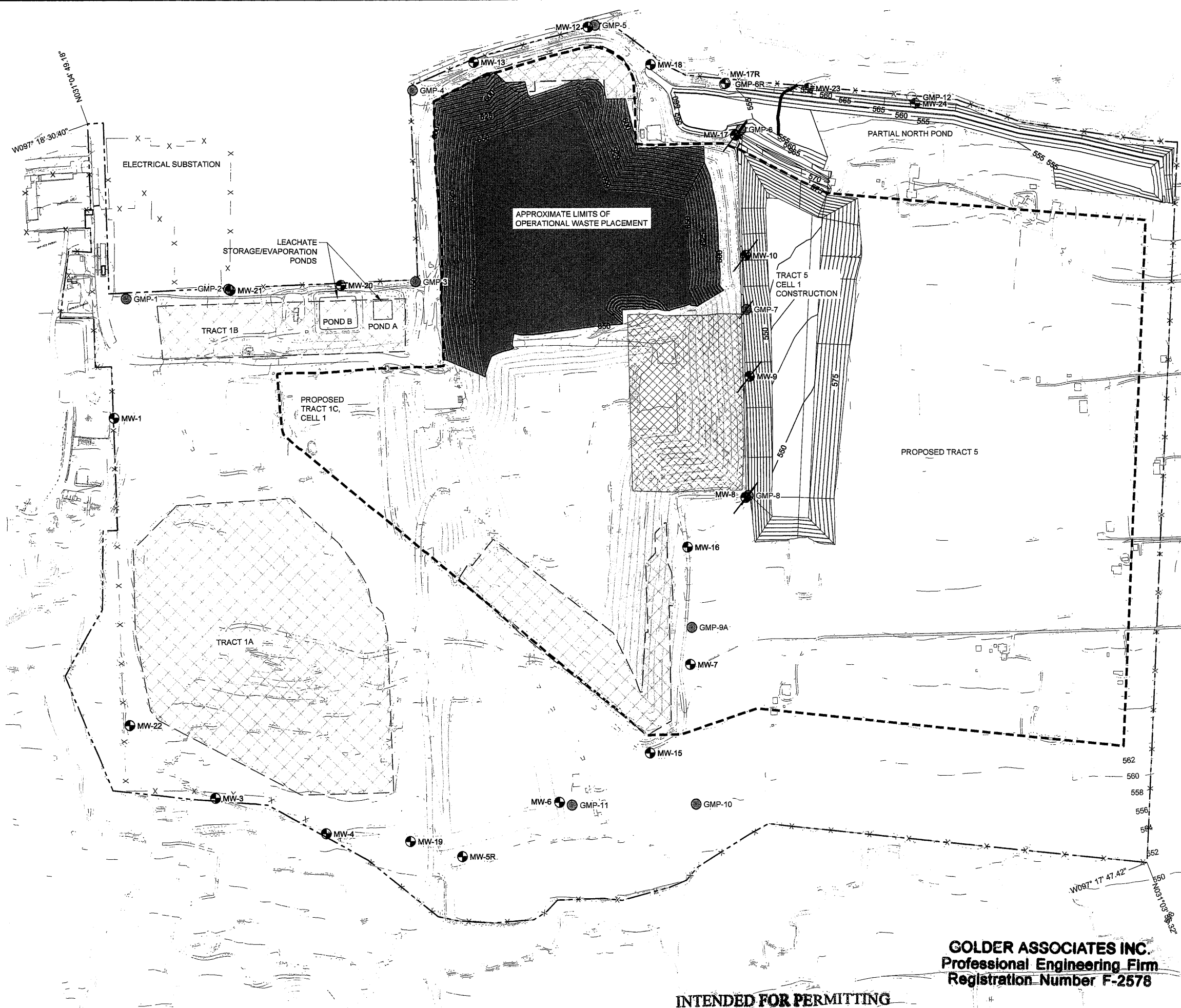


RESPONSE 79

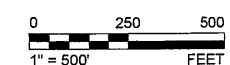
Path: \\Houston\trading\201414\PRODUCTION\A - PERMIT AMENDMENT APPLICATION\ File Name: 1400336A086.dwg



NOTES

- LANDFILL TOPOGRAPHY COMPILED BY PHOTOGRAMMETRIC METHODS FROM AERIAL PHOTOGRAPH DATED MARCH 6, 2015.

- SEQUENCE OF LANDFILL OPERATION**
- CONTINUE WASTE PLACEMENT IN CONSTRUCTED LANDFILL CELLS.
 - CONTINUE CONSTRUCTION OF THE STORMWATER/SEDIMENTATION DETENTION PONDS.
 - CONSTRUCT LANDFILL CELLS AS REQUIRED FOR WASTE PLACEMENT IN AN EASTERLY DIRECTION.
 - PROVIDE INTERMEDIATE COVER AS FINAL GRADE IS REACHED AND IN AREAS WHERE RUNOFF DISCHARGES TO THE PERIMETER DITCH SYSTEM.
 - INSTALL ADDITIONAL MONITOR WELLS AS INDICATED IN ATTACHMENT 5 AND ADDITIONAL GAS MONITORING PROBES AS INDICATED IN ATTACHMENT 6.
 - INSTALL FINAL COVER IN AREAS WHICH WILL NOT RECEIVE ADDITIONAL WASTE.



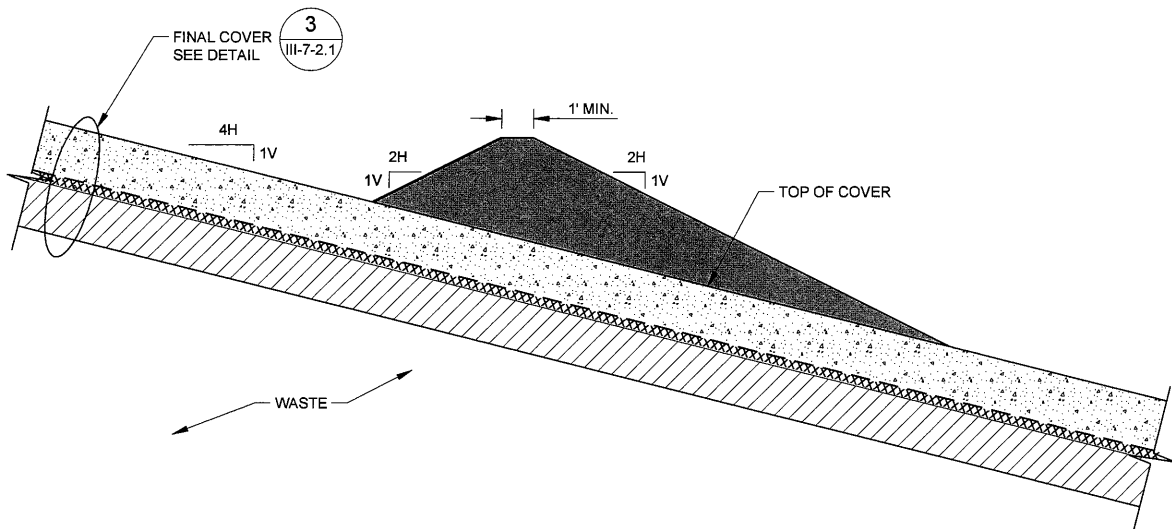
GOLDER ASSOCIATES INC.
Professional Engineering Firm
Registration Number F-2578

INTENDED FOR PERMITTING PURPOSES ONLY

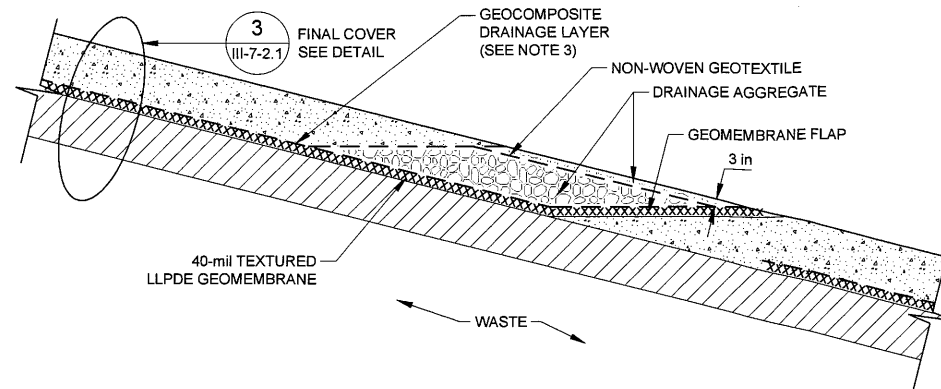


<p>PROJECT PERMIT AMENDMENT APPLICATION MSW 692B TEMPLE RECYCLING AND DISPOSAL FACILITY BELL COUNTY, TEXAS</p>	<p>CLIENT CITY OF TEMPLE</p>	<p>CONSULTANT Golder Associates</p>	<p>HOUSTON 500 CENTURY PLAZA DR., SUITE 190 HOUSTON, TX 77073 USA (281) 821-6668 www.golder.com</p>
<p>TITLE OPERATIONAL SEQUENCE PHASE 1</p>	<p>APPLICATION SECTION II</p>	<p>PROJECT NO. 1400336</p>	<p>REV. 0 7 of 25 FIGURE II-7.1</p>

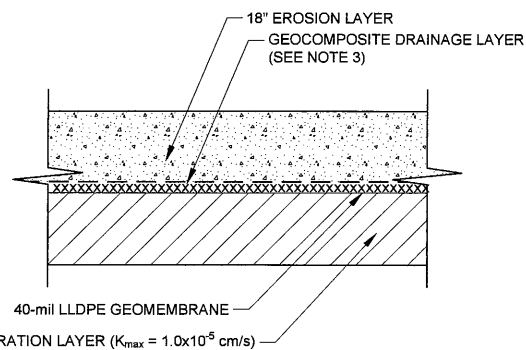
IF THIS MEASUREMENT DOES NOT MATCH WHAT IS SHOWN, THE SHEET SIZE HAS BEEN MODIFIED FROM: ANSI B



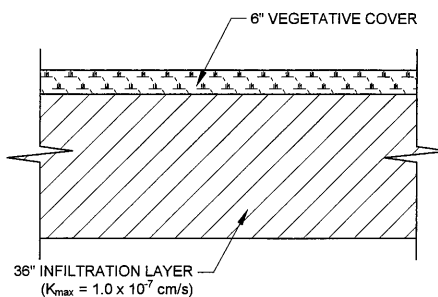
SCALE 1" = 6'
 1 DETAIL
 III-7-2.1 ADD-ON BERM



SCALE 1" = 6'
 2 DETAIL
 III-7-2.1 GEOCOMPOSITE DAYLIGHT DRAINAGE



SCALE 1" = 4'
 3 DETAIL
 III-7-2.1 PROPOSED FINAL COVER

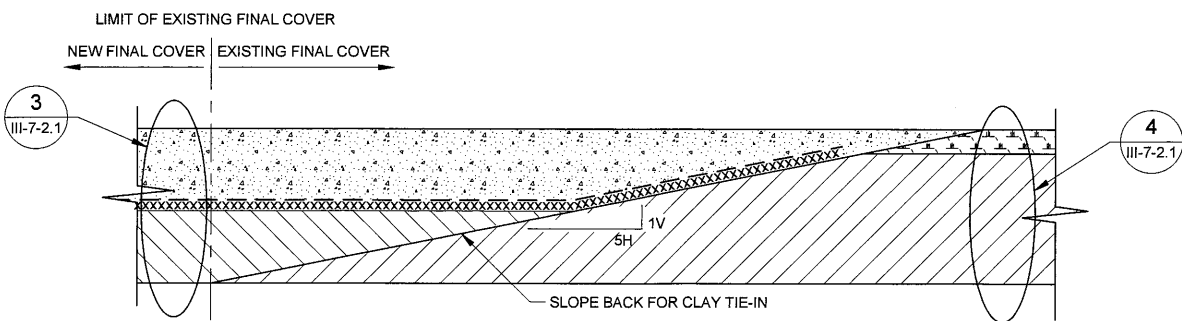


SCALE 1" = 4'
 4 DETAIL
 III-7-2.1 EXISTING FINAL COVER - TRACT 2A & 3

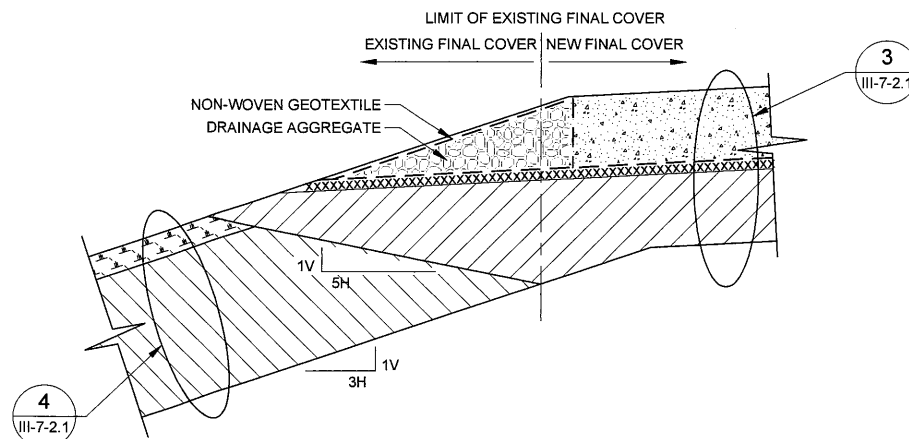
- NOTES**
1. GEOSYNTHETICS SHOWN EXAGGERATED FOR CLARITY.
 2. SEE ATTACHMENT 2 FOR DETAILS OF STORMWATER MANAGEMENT FEATURES.
 3. SEE ATTACHMENT 3, APPENDIX III-3D-2 FOR DESIGN AND LOCATIONS OF THE GEOCOMPOSITE DRAINAGE LAYER.

INTENDED FOR PERMITTING PURPOSES ONLY

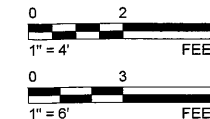
GOLDER ASSOCIATES INC.
 Professional Engineering Firm
 Registration Number F-2578



SCALE 1" = 4'
 A DETAIL
 III-7-2.1 TIE-IN BETWEEN EXISTING AND PROPOSED FINAL COVER



SCALE 1" = 4'
 B DETAIL
 III-7-2.1 TIE-IN BETWEEN EXISTING AND PROPOSED FINAL COVER



Path: \\houston\draffing\2014\146...pfile\PRODUCTION_A - PERMIT AMENDMENT APPLICATION | File Name: 1400336A035 - FINAL COVER DETAILS.dwg

PROJECT	PERMIT AMENDMENT APPLICATION MSW 692B
TITLE	FINAL COVER DETAILS I
CLIENT	CITY OF TEMPLE
CONSULTANT	Golder Associates
CONTRACT	HOUSTON 500 CENTURY PLAZA DR., SUITE 190 HOUSTON, TX 77073 USA (281) 821-6868 www.golder.com
REV.	0
FIGURE	III-7-2.1
DATE	2016-12-03
DESCRIPTION	DESIGNED PREPARED REVIEWED APPROVED
DESIGNED	CGD
PREPARED	PRM
REVIEWED	CGD
APPROVED	CGD
RESPONSE TO 1ST NOD	MX
INITIAL SUBMITTAL	VJE
DESCRIPTION	TNB
DATE	2015-12-03
DATE	2016-12

IF THIS MEASUREMENT DOES NOT MATCH WHAT IS SHOWN, THE SHEET SIZE HAS BEEN MODIFIED FROM ANSI B 11.1